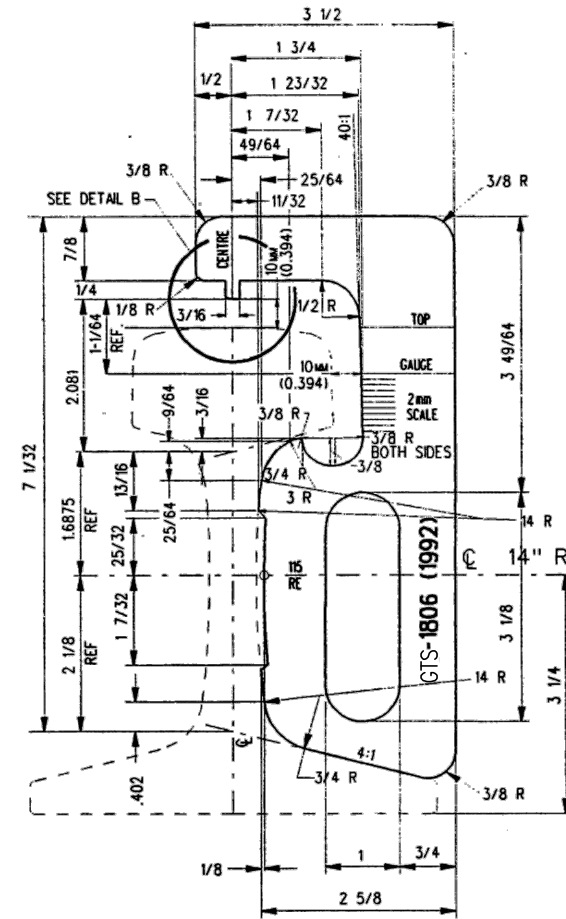
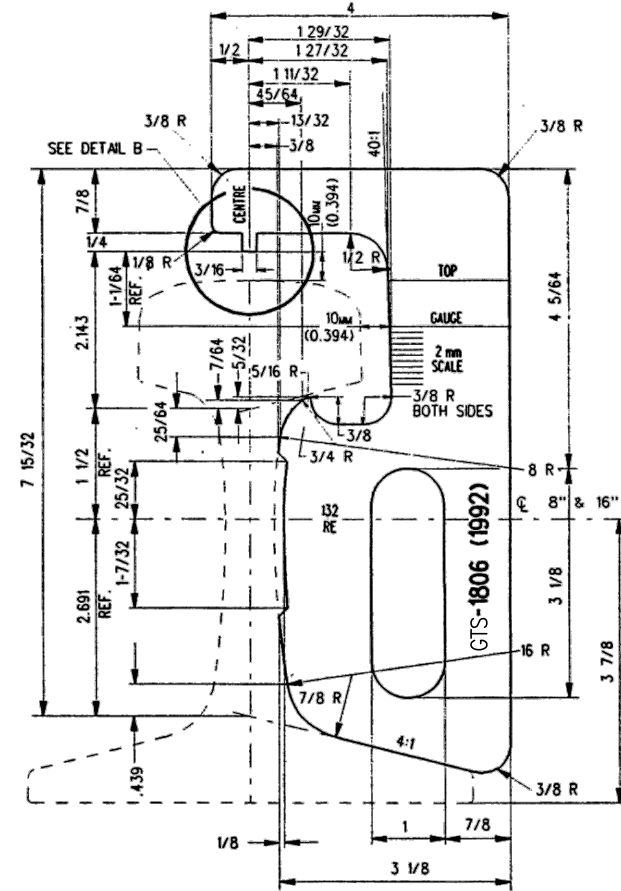


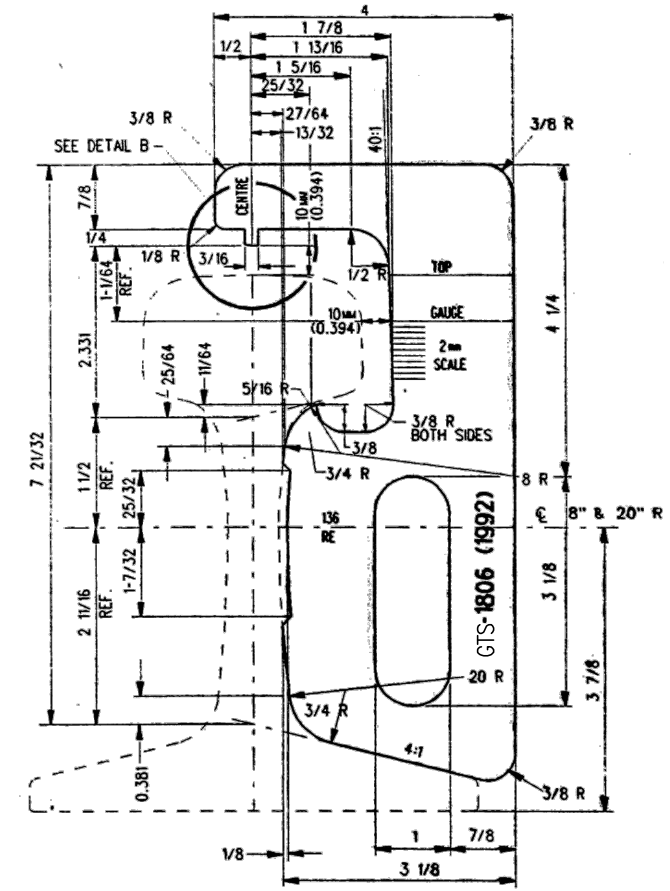
100 LB. A.R.A. - A. RAIL



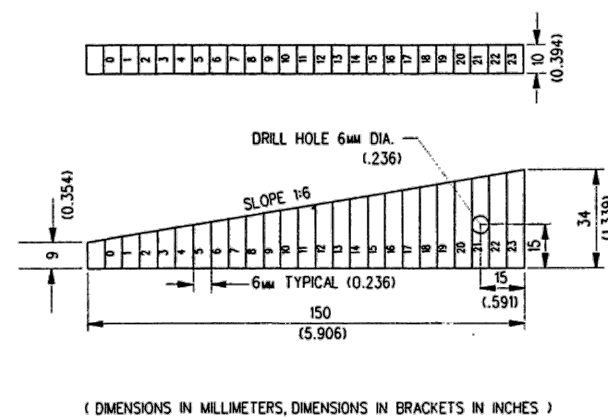
115 LB. R.E. RAIL



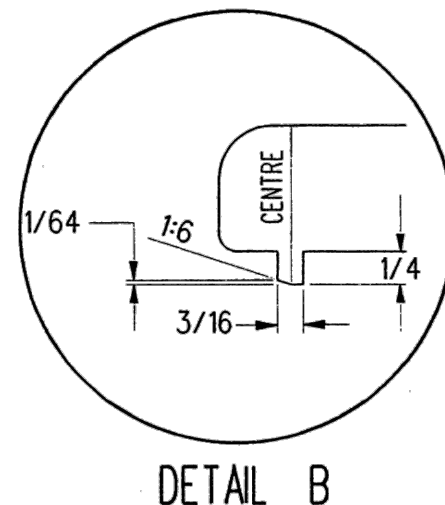
132 LB. R.E. RAIL



136 LB. R.E. RAIL



TAPER GAUGE



DETAIL B

NOTES :

1. ALL DIMENSIONS ARE IN INCHES, UNLESS STATED OTHERWISE.
2. ALL RADII ARE 1/16", UNLESS STATED OTHERWISE.
3. DECIMAL DIMENSION TOLERANCES - ±.005".
4. IDENTIFICATION CHARACTERS AND LINES TO BE ETCHED OR STAMPED CLEARLY ON BOTH SIDES OF RAIL WEAR GAUGES AND BOTH SIDES AND TOP OF TAPER GAUGES AS SHOWN :
 - RAIL WEAR GAUGES : 1/8" MINIMUM HEIGHT.
 - TAPER GAUGE : 3mm MINIMUM HEIGHT.
5. WHEN REFERRING TO RAIL WEAR GAUGES, DRAWING NUMBER, WEIGHT OF RAIL AND STOCK NUMBER MUST BE STATED TO INDICATE SPECIFIC GAUGE REQUIRED.

MATERIALS :

RAIL WEAR GAUGES - TO BE MADE OF NO. 17 GAUGE TYPE 440 STAINLESS STEEL.
 TAPER GAUGE - TO BE MADE OF 10mm SPRING STEEL.

METRIC CONVERSION: 1 inch=25.4mm, 1 foot=304.8mm

No.	Date	Revision	By Approved
1	18/07/27	ADDED IMPERIAL TO METRIC CONVERSION NOTE	

Standard	MANUFACTURING DETAILS GAUGES RAIL WEAR AND TAPER		
Drawn	MG	Checked	GGS
Approved	VP Engineering & Asset Management		



Date	DEC 15, 2017	Plan Number	GTS-1806	Rev	1
REFERENCE: TS-1806			Sheet 1 OF 1		