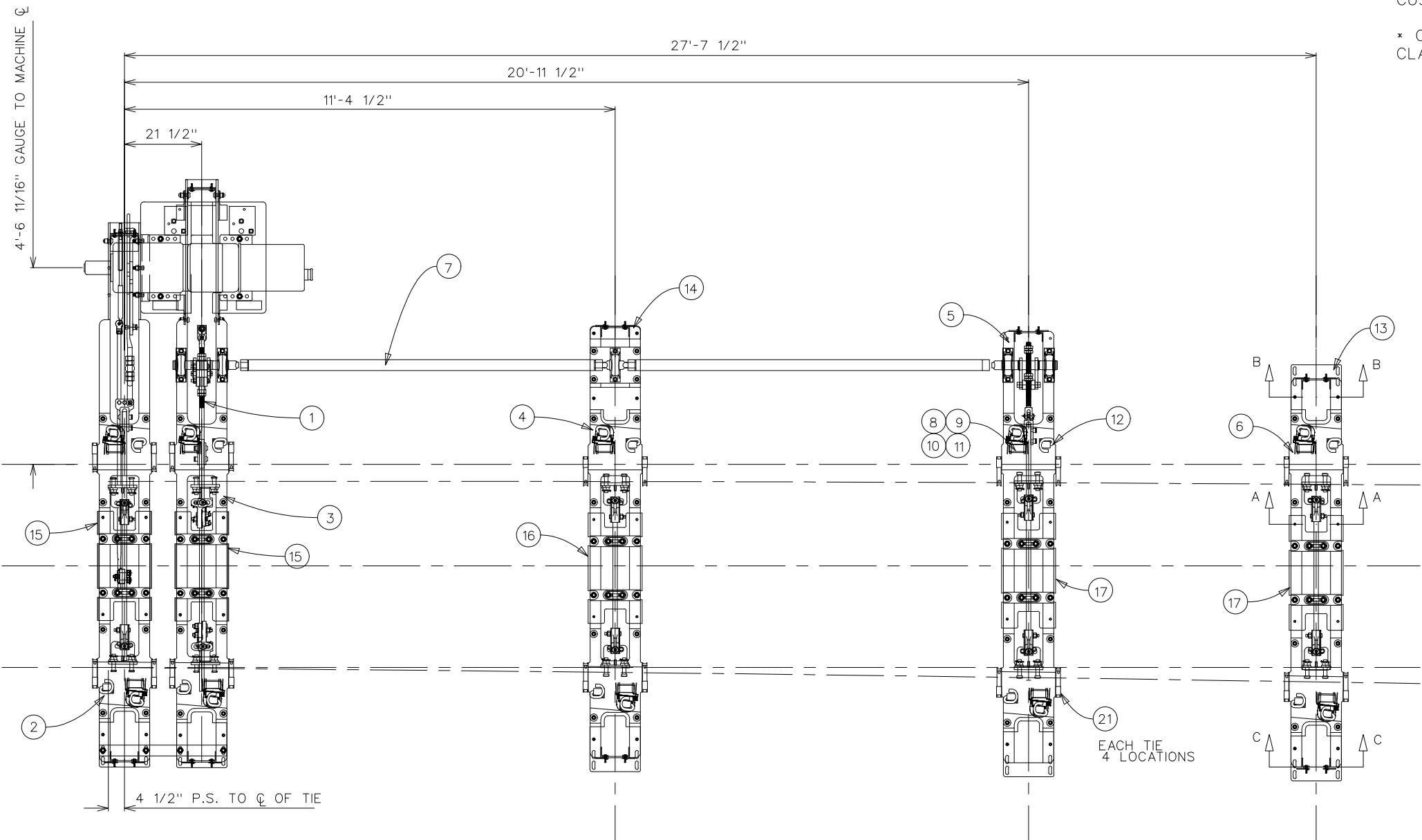


SECTION A-A
HOLLOW TIE TOP COVER DETAIL

SECTION B-B
END COVER PLATE

SECTION C-C
HOLLOW TIE END COVER DETAIL

NOTE:
1. US&S M23 SWITCH MACHINE TO BE SUPPLIED BY CUSTOMER.
* COVER PLATES SHOWN TRANSPARENT FOR CLARIFY.



METRIC CONVERSION: 1 inch=25.4mm, 1 foot=304.8mm			
0	19/01/31	REVISED PDF VERSION ESTABLISHED	
No.	Date	Revision	By Approved
Standard		HOLLOW SWITCH TIE & RODDING G.A. FOR #20-136RE RHTO SWICH MACHINE ON MAINLINE SIDE CONCRETE TIES	
Drawn	MG	Checked	GGS
		Approved	VP Engineering & Asset Management
Date		Plan Number	Rev
JAN 31, 2019		GTS-2116	0
REFERENCE:			Sheet 1 OF 1

BILL OF MATERIALS FOR GTS-2116

ITEM	PROOUCT No.	QTY	DESCRIPTION
1	A70-60162	1	RODDING ASSEMBLY FOR 39'-0" SWITCH PACK CONCRETE
2	B75-05601	1	HOLLOW TIE ASSEMBLY (HT-1R-20-136) CONC
3	B75-05603	1	HOLLOW TIE ASSEMBLY (HT-2R-20-136) CONC
4	B75-05605	1	HOLLOW TIE ASSEMBLY (HT-3R-20-136) CONC
5	B75-05607	1	HOLLOW TIE ASSEMBLY (HT-4R-20-136) CONC
6	B75-05609	1	HOLLOW TIE ASSEMBLY (HT-5R-20-136) CONC
7	B99-70362	1	ROTARY ASSIST ASSEMBLY
8	UI0-00105	10	BRACE, CLICKTITE RAIL BRACE 136/141RE, DYCTILE IRON
9	X27-00000	10	WEDGE, TAPERED FOR CLICKTITE BRACE
10	X27-00001	10	SERRATED WASHER, CLICK-TITE RAIL BRACE
11	X25-00010	10	CLIP, PANDROL, E2055 RH
12	X25-00011	10	CLIP, PANDROL, E2056 LH
13	X99-06027	4	STEEL COVER PLATE FOR HST TIE, TOP END
14	X99-06017	1	STEEL COVER PLATE FOR HST TIE, SHORT TOP VERSION
*15	B99-89080	2	COVER PLATE #1, HOLLOW SWITCH TIE
*16	B99-89081	1	COVER PLATE #2, HOLLOW SWITCH TIE
*17	B99-89082	2	COVER PLATE #3, HOLLOW SWITCH TIE
18	B99-89092	42	PUSH PIN ASSEMBLY FOR HST COVER
19	B99-89096	6	STEEL SIDE END COVER PLATE ASSEMBLY FOR HST TIE
20	L55-20009	12	COVER SUPPORT BRACKET
21	X40-00301	20	RAIL ANCHOR, UNIT DRIVE-ON TYPE 5