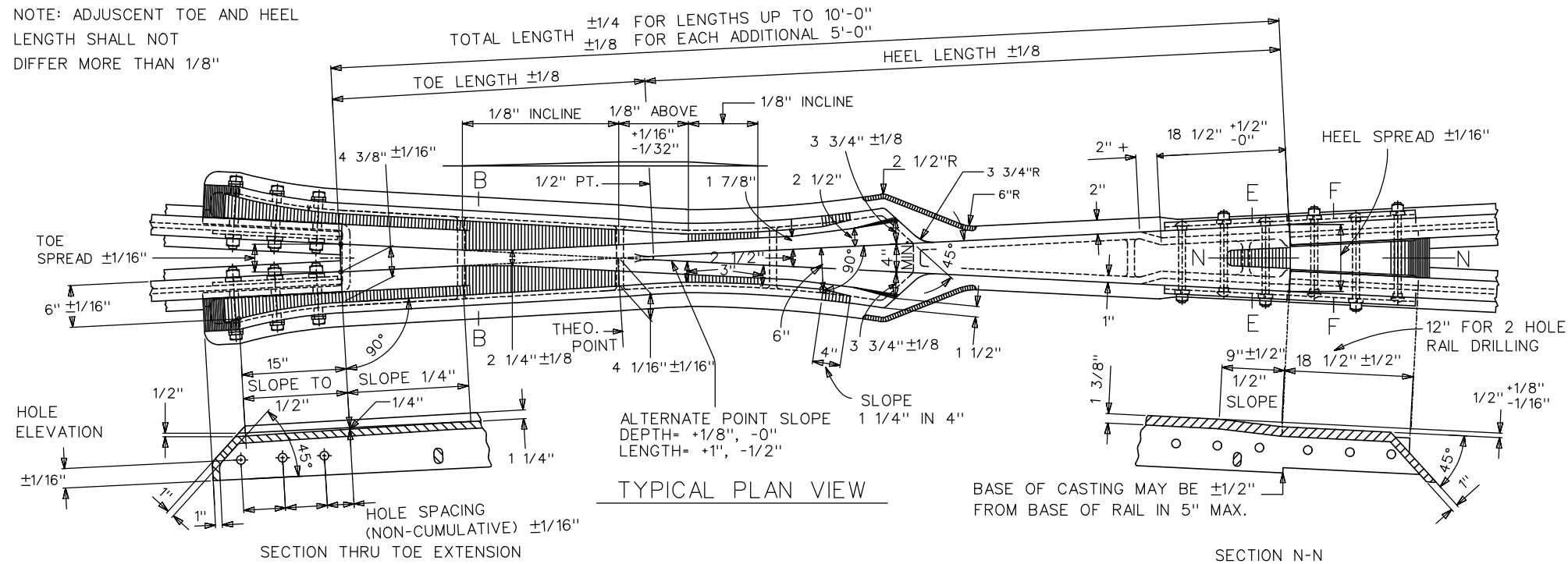
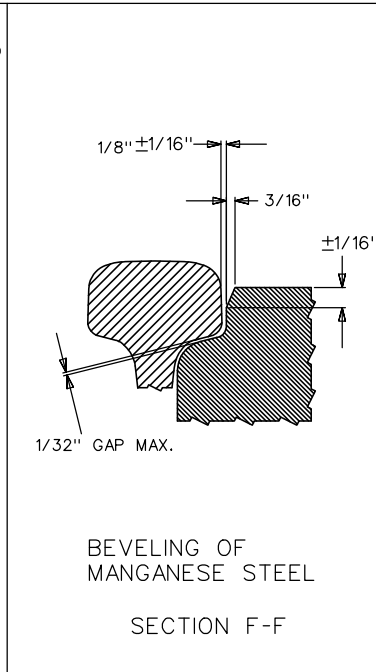
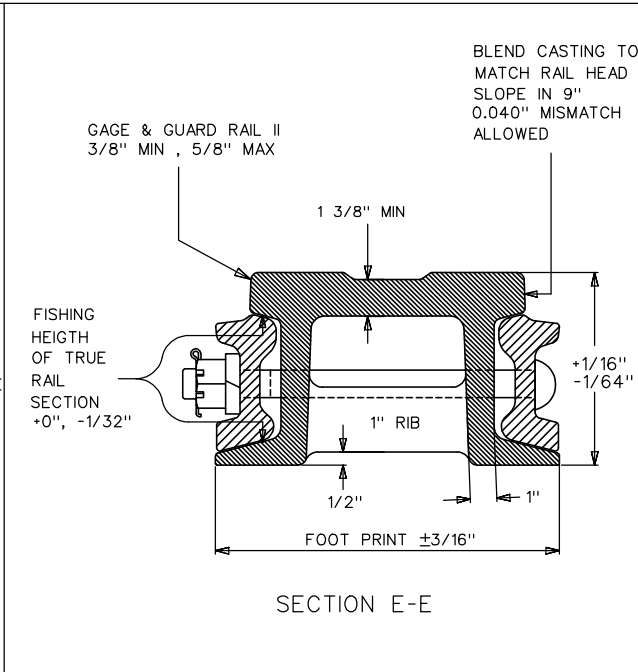
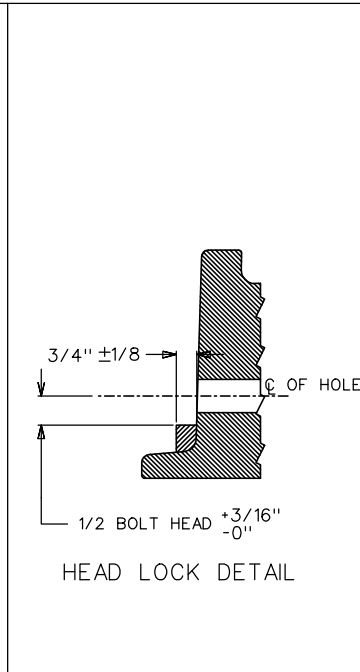
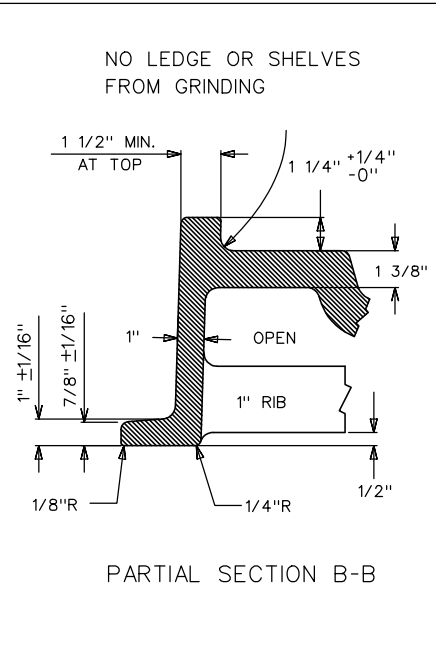


NOTE: ADJUSCENT TOE AND HEEL LENGTH SHALL NOT DIFFER MORE THAN 1/8"



ALIGNMENT:  
 GAGE LINES SHALL NOT VARY MORE THAN 1/16" OF TRUE LINE.  
 THE LINE PRODUCED AT TOE SHALL NOT TOUCH THE POINT.  
 1/8" CROWN OR DEPRESSION WITHIN BODY OF FROG.  
 NO ABRUPT OFFSETS GREATER THAN 1/16".



- NOTES:
- SPECIFICATIONS- SEE GO TRANSIT TRACK STANDARD (GTTS), LATEST EDITION.
  - JOINT HOLES: A VARIATION OF NOTHING UNDER AND 1/16" OVER IN SIZE OF BOLT HOLES WILL BE PERMITTED.
  - DEPTH HARDENING SPECIFICATION, BRINELL HARDNESS NUMBER AND TEST LOCATIONS PER GTTS, SECTION 4-RAIL, LATEST EDITION.

| METRIC CONVERSION: 1 inch=25.4mm, 1 foot=304.8mm |          |   |                                   |
|--|----------|---|-----------------------------------|
| 0  | 19/03/29 | REVISED PDF VERSION ESTABLISHED   |                                   |
| No.  | Date     | Revision  | By Approved                       |
| Standard/  |          | PERMISSIBLE VARIATIONS IN COMPLETED SOLID MANGANESE STEEL SELF GUARDED FROG |                                   |
| Drawn  | Checked  | Approved  | VP Engineering & Asset Management |
| MG   | GGS      |   |                                   |
| Date   |          | Plan Number   | Rev                               |
| MAR 29, 2019                                     |          | GTS-820   | 0                                 |
| REFERENCE: AREMA- PLAN NO 1022-03 Sheet 2 OF 2   |          |   |                                   |