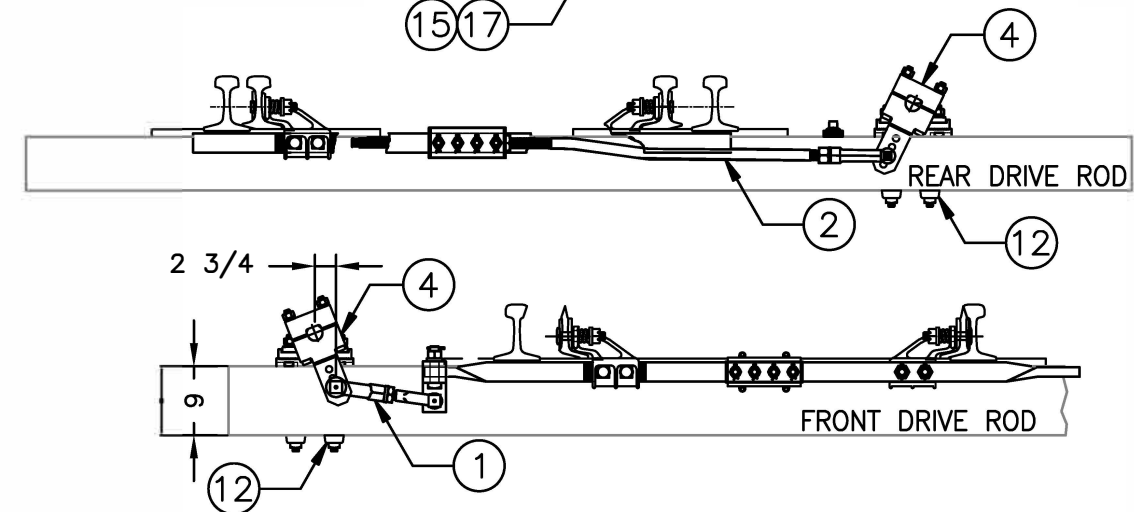



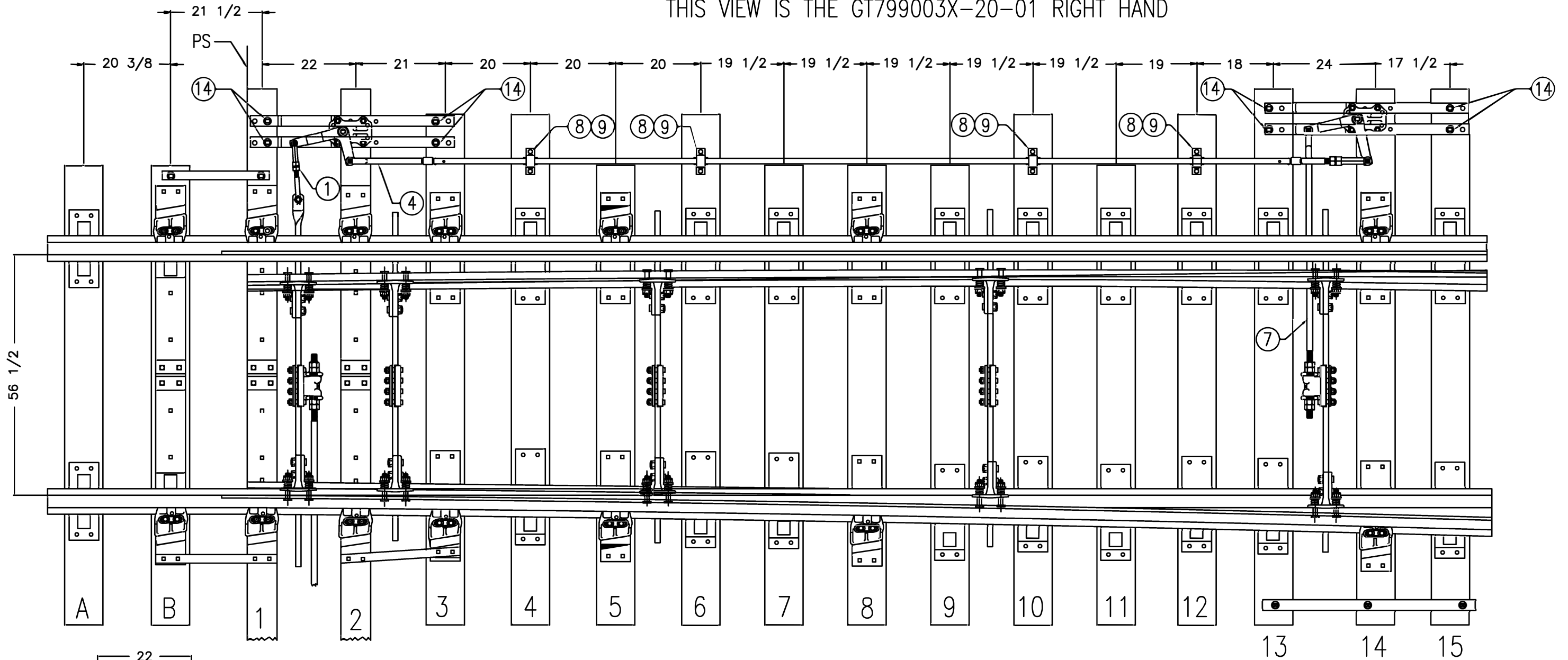
NOTE 1: TIES NUMBER 7 AND 8 NEED TO BE CHANGED WITH 6 AND 10.



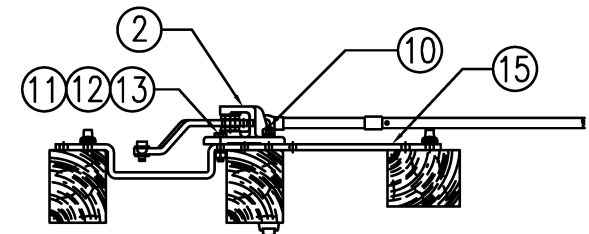
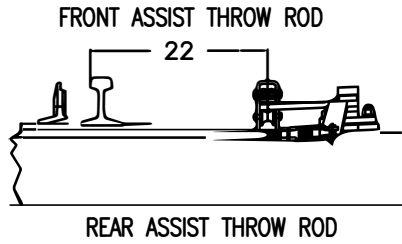
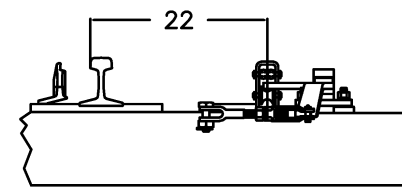
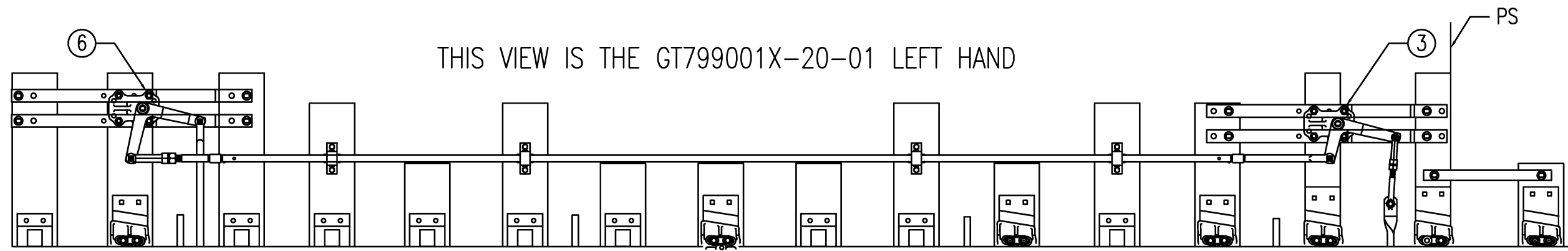
ITEM NUMBER	PART NUMBER	DESCRIPTION	QUANTITY
1	840120-112-03	ROD ASSY,OPERATING (FRONT DRIVE)	1
2	980230-022-01	ROD ASSY,OPERATING (REAR DRIVE)	1
3	950125-001-10	SWITCH POINT ADJUSTER	2
4	999037-321-01	DRIVE ARM ASSEMBLY	2
5	999037-514	PLATE, PILLOW BLOCK MOUNTING	1
6	999037-507	PLATE, PILLOW BLOCK MOUNTING	1
7	999037-506	PLATE, PILLOW BLOCK MOUNTING	1
8	999037-300-01	PILLOW BLOCK ASSEMBLY	3
9	R999037-500-03	DRIVE BAR	1
10	R999037-500-02	DRIVE BAR RH	1
11	999037-505-01	DRIVE BAR COUPLING ASSEMBLY	1
12	910922-135-01	STUD ASSEMBLY, 3/4 x 14	12
13	999037-509-01	BRACKET ASSEMBLY	1
14	999037-532	DRIVEBAR PLATE SPACER	3
15	860021-001	TIE STRAP	1
16	860002-010	TIE STRAP	1
17	995000-011	SCREW, 7/8" X 6-3/4" SPIKE	5

 TRANSIT	ROTARY HELPER ROD LAYOUT FOR #20 TURNOUT 136LB RAIL		
	SIGNALS AND COMMUNICATIONS		
REVISION 0	SHEET 1 OF 1	APPROVED BY TC	DATE 10/29/20
		SCP-10 PAGE 1	GT798021X

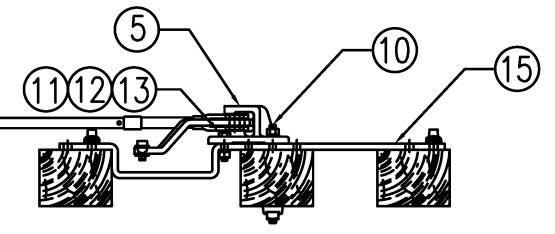
THIS VIEW IS THE GT799003X-20-01 RIGHT HAND



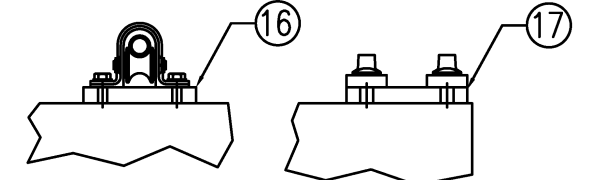
THIS VIEW IS THE GT799001X-20-01 LEFT HAND



Front Crank Assembly Detail



Rear Crank Assembly Detail



WHEN USING SCHWIHAG ROLLERS
SHIMS ARE SUPPLIED FOR ROLLERS
AND TIE STRAPS ON TIES 3, 4, AND 12


SWITCH HELPER ROD LAYOUTS
 #20 RH AND LH
 WITH PRE-ASSEMBLED BOOSTER RODS
SIGNALS AND COMMUNICATIONS

REVISION	SHEET	APPROVED BY	DATE	SCP-10	GT799001X-20-01
0	1 OF 2	TC	10/15/20	PAGE 2	GT799003X-20-01

ITEM	PART NUMBER	DESCRIPTION	GT799001X-20-01 QUANTITY	GT799003X-20-01 QUANTITY
1	980230-005X	ROD ASSY, FRONT ASSIST THROW	1	1
A	980230-005	ROD, FRONT ASSIST THROW	(1)	(1)
B	898010-001	SCREW JAW	(1)	(1)
C	890590-005X	PIN ASSEMBLY, JAW	(1)	(1)
D	990331-125-02	NUT, 1 1/4 HEAVY HEX	(1)	(1)
E	990401-125-02	WASHER, 1 1/4 LOCK	(1)	(1)
F	990247-425-121	BOLT, 1.125 X 4.250 SQ HD	(1)	(1)
G	990511-200-02	COTTER PIN, 1/4 X 2	(1)	(1)
H	990332-112-02	NUT, 1 1/8 HEAVY HEX SLOTTED	(1)	(1)
2	980500-047RX	CRANK STAND ASSEMBLY	0	1
A	980010-047R	CRANK	(0)	(1)
B	980015X	STAND ASSEMBLY	(0)	(1)
3	980500-047LX	CRANK STAND ASSEMBLY	1	0
A	980010-047L	CRANK	(1)	(0)
B	980015X	STAND ASSEMBLY	(1)	(0)
4	880032-003X	ROD ASSY, BOOSTER	1	1
A	880031-206	BOOSTER ROD	(1)	(1)
B	980020-004-02	ROD ASSY, TANGED SCREW JAW	(1)	(1)
C	980020-002-02	ROD ASSY, SOLID SCREW JAW	(1)	(1)
D	890800-175-00	RIVET, 1/4 x 1 11/16	(4)	(4)
5	980500-049RX	CRANK STAND ASSEMBLY	0	1
A	980010-049R	CRANK	(0)	(1)
B	980015X	STAND ASSEMBLY	(0)	(1)
6	980500-049LX	CRANK STAND ASSEMBLY	1	0
A	980010-049L	CRANK	(1)	(0)
B	980015X	STAND ASSEMBLY	(1)	(0)
7	840120-002X	ROD ASSEMBLY, OPERATING	1	1
A	840120-002	ROD, OPERATING	(1)	(1)
B	890590-005X	PIN ASSEMBLY, JAW	(1)	(1)
C	990331-125-02	NUT, 1 1/4 HEAVY HEX	(2)	(2)
8	980200-001X	PIPE CARRIER ASSEMBLY	4	4
9	990120-400-02	LAG SCREW, 1/2 X 4	8	8
10	910922-020-01	STUD ASSEMBLY, 3/4 X 13	4	4
11	990731-300-02	BOLT, 0.750 X 3.000 HEX	4	4
12	990331-075-02	NUT, 3/4 HEAVY HEX	4	4
13	990401-075-02	WASHER, 3/4 LOCK	4	4
14	995000-008	TIE SCREW, 24 X 165 MM	8	8
15	860020-001	TIE STRAP, OFFSET	4	4
16	980200-007	SHIM PLATE, ROLLER	2	2
17	980200-008	SHIM PLATE, TIE STRAP	1	1



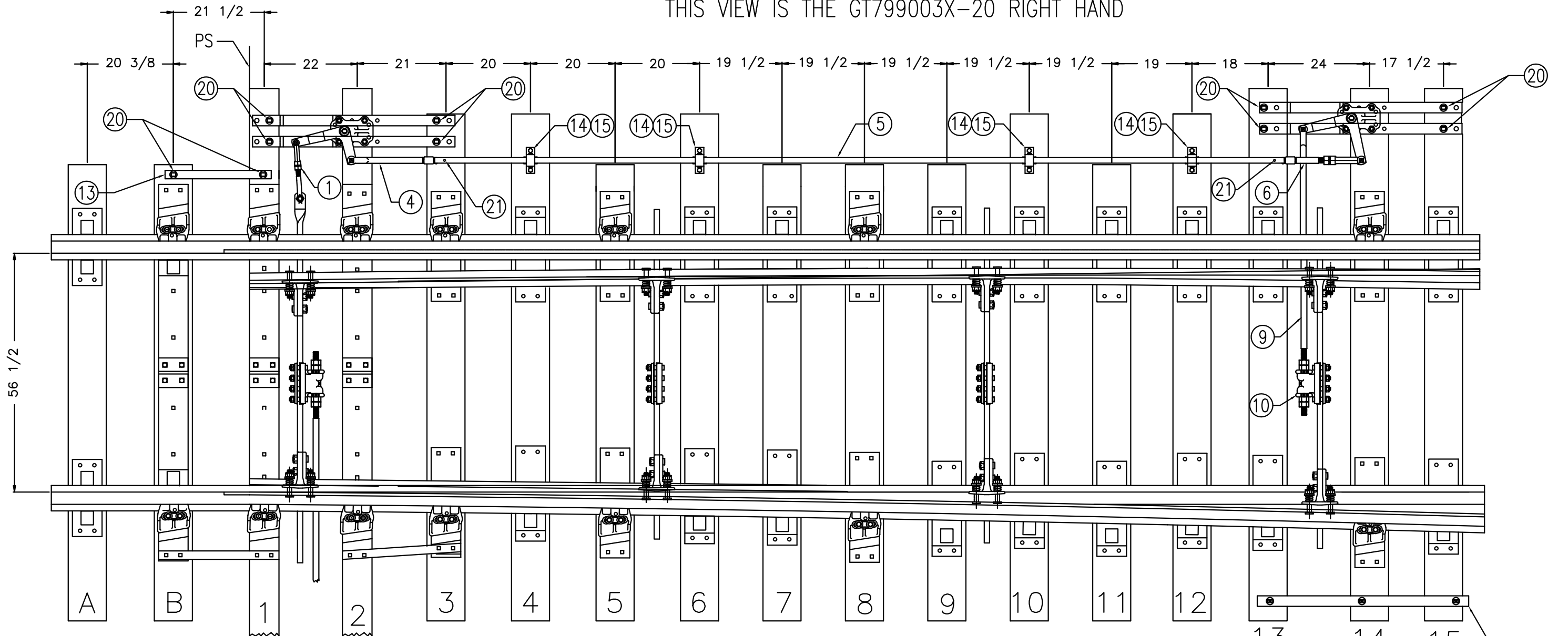
TRANSIT

SWITCH HELPER ROD
LAYOUTS
#20 RH AND LH
WITH PRE-ASSEMBLED BOOSTER RODS

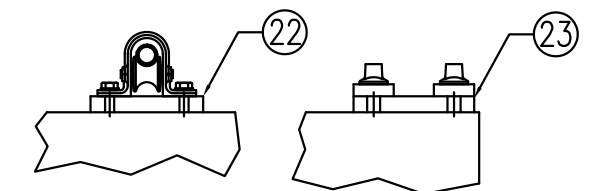
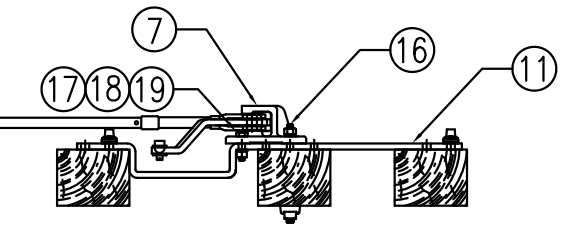
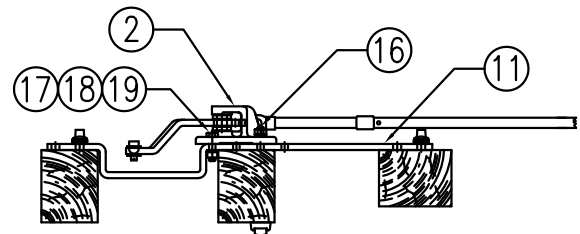
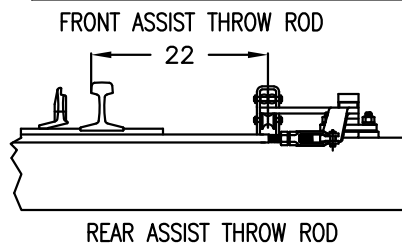
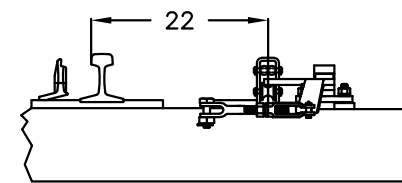
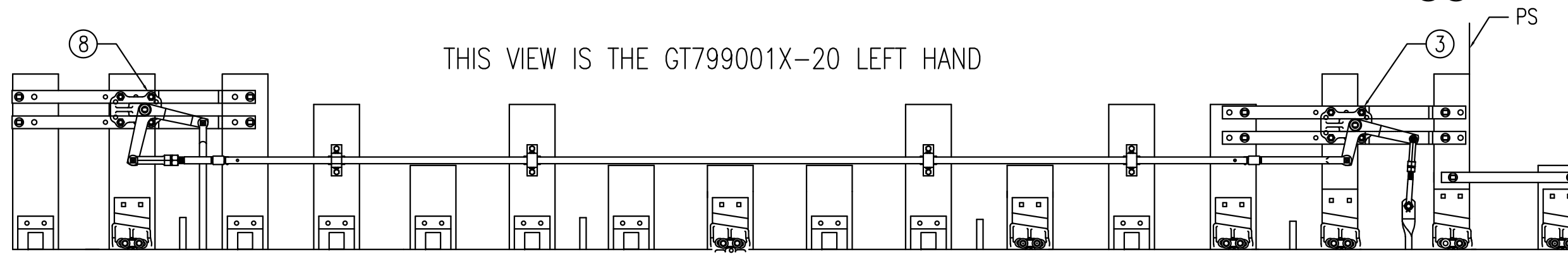
SIGNALS AND COMMUNICATIONS

REVISION	SHEET	APPROVED BY	DATE	SCP-10	GT799001X-20-01
0	2 OF 2	TC	10/15/20	PAGE 3	GT799003X-20-01

THIS VIEW IS THE GT799003X-20 RIGHT HAND



THIS VIEW IS THE GT799001X-20 LEFT HAND



WHEN USING SCHWIHAG ROLLERS
SHIMS ARE SUPPLIED FOR ROLLERS
AND TIE STRAPS ON TIES 3, 4, AND 12

		SWITCH HELPER ROD LAYOUTS #20 RH AND LH			
		SIGNALS AND COMMUNICATIONS			
REVISION	SHEET	APPROVED BY	DATE	SCP-10	GT799001X-20
0	1 OF 2	TC	10/15/20	PAGE 4	GT799003X-20

Front Crank Assembly Detail

Rear Crank Assembly Detail

ITEM	PART NUMBER	DESCRIPTION	GT799001X-20 QUANTITY	GT799003X-20 QUANTITY
1	980230-005X	ROD ASSY, FRONT ASSIST THROW	1	1
A	980230-005	ROD, FRONT ASSIST THROW	(1)	(1)
B	898010-001	SCREW JAW	(1)	(1)
C	890590-005X	PIN ASSEMBLY, JAW	(1)	(1)
D	990331-125-02	NUT, 1 1/4 HEAVY HEX	(1)	(1)
E	990401-125-02	WASHER, 1 1/4 LOCK	(1)	(1)
F	990247-425-121	BOLT, 1.125 X 4.250 SQ HD	(1)	(1)
G	990511-200-02	COTTER PIN, 1/4 X 2	(1)	(1)
H	990332-112-02	NUT, 1 1/8 HEAVY HEX SLOTTED	(1)	(1)
2	980500-047RX	CRANK STAND ASSEMBLY	0	1
A	980010-047R	CRANK	(0)	(1)
B	980015X	STAND ASSEMBLY	(0)	(1)
3	980500-047LX	CRANK STAND ASSEMBLY	1	0
A	980010-047L	CRANK	(1)	(0)
B	980015X	STAND ASSEMBLY	(1)	(0)
4	980020-002-02	ROD ASSY, TANGED SOLID JAW	1	1
5	880031-206	BOOSTER ROD	1	1
6	980020-004-02	ROD ASSY, TANGED SCREW JAW	1	1
7	980500-049RX	CRANK STAND ASSEMBLY	0	1
A	980010-049R	CRANK	(0)	(1)
B	980015X	STAND ASSEMBLY	(0)	(1)
8	980500-049LX	CRANK STAND ASSEMBLY	1	0
A	980010-049L	CRANK	(1)	(0)
B	980015X	STAND ASSEMBLY	(1)	(0)
9	840120-002X	ROD ASSEMBLY, OPERATING	1	1
A	840120-002	ROD, OPERATING	(1)	(1)
B	890590-005X	PIN ASSEMBLY, JAW	(1)	(1)
C	990331-125-02	NUT, 1 1/4 HEAVY HEX	(2)	(2)
10	950125-001-10	BASKET ASSEMBLY	1	1
11	860020-001	TIE STRAP, OFFSET	4	4
12	860021-001	TIE STRAP	1	1
13	860002-010	TIE STRAP	1	1
14	980200-001X	PIPE CARRIER ASSEMBLY	4	4
15	990120-400-02	LAG SCREW, 1/2 X 4	8	8
16	910922-020-01	STUD ASSEMBLY, 3/4 X 13	4	4
17	990731-300-02	BOLT, 0.750 X 3.000 HEX	4	4
18	990331-075-02	NUT, 3/4 HEAVY HEX	4	4
19	990401-075-02	WASHER, 3/4 LOCK	4	4
20	995000-008	TIE SCREW, 24 X 165 MM	13	13
21	890800-175-00	RIVET, 1/4 x 1 11/16	4	4
22	980200-007	SHIM PLATE, ROLLER	2	2
23	980200-008	SHIM PLATE, TIE STRAP	1	1



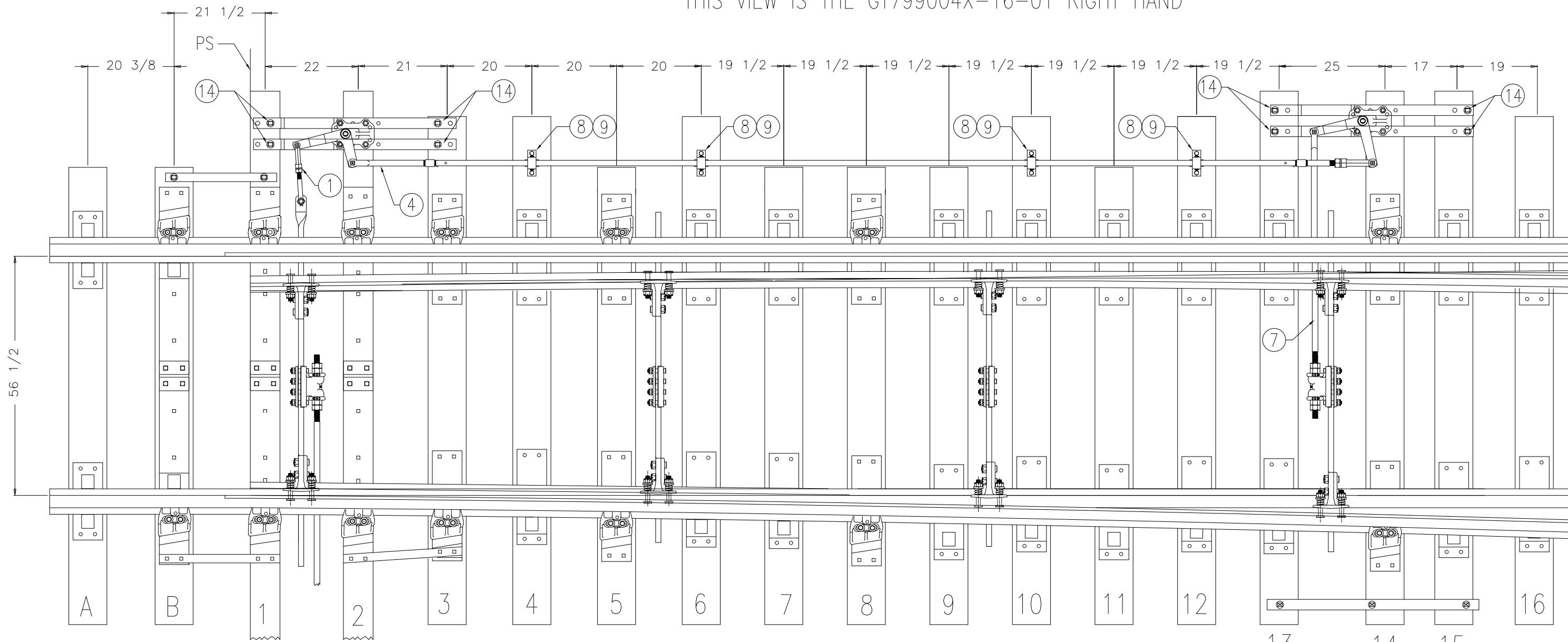
TRANSIT

SWITCH HELPER ROD
LAYOUTS
#20 RH AND LH

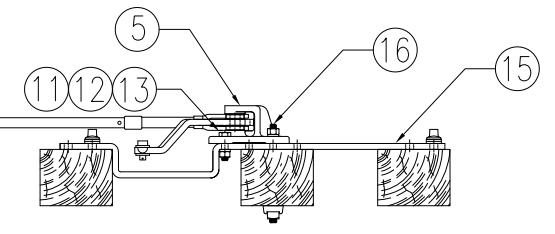
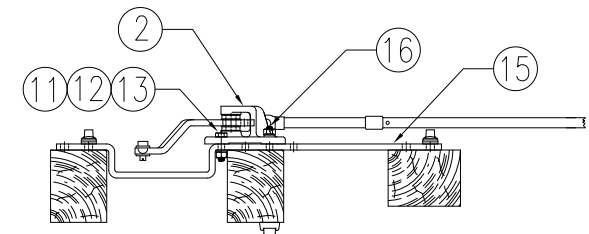
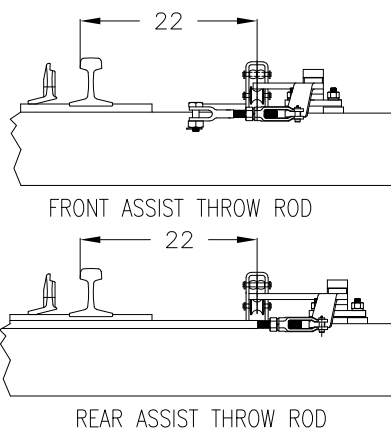
SIGNALS AND COMMUNICATIONS

REVISION	SHEET	APPROVED BY	DATE	SCP-10	GT799001X-20
0	2 OF 2	TC	10/15/20	PAGE 5	GT799003X-20

THIS VIEW IS THE GT799004X-16-01 RIGHT HAND



THIS VIEW IS THE GT799002X-16-01 LEFT HAND



Front Crank Assembly Detail

Rear Crank Assembly Detail


SWITCH HELPER ROD LAYOUTS
#16 RH AND LH
 WITH PRE-ASSEMBLED BOOSTER RODS
SIGNALS AND COMMUNICATIONS

REVISION	SHEET	APPROVED BY	DATE	SCP-10	GT799002X-16-01
0	1 OF 2	TC	10/15/20	PAGE 6	GT799004X-16-01

ITEM	PART NUMBER	DESCRIPTION	GT799002X-16-01 QUANTITY	GT799004X-16-01 QUANTITY
1	980230-005X	ROD ASSY, FRONT ASSIST THROW	1	1
A	980230-005	ROD, FRONT ASSIST THROW	(1)	(1)
B	898010-001	SCREW JAW	(1)	(1)
C	890590-005X	PIN ASSEMBLY, JAW	(1)	(1)
D	990332-112-02	NUT, 1 1/4 HEAVY HEX	(1)	(1)
E	990331-125-02	WASHER, 1 1/4 LOCK	(1)	(1)
F	990401-125-02	BOLT, 1.125 X 4.250 SQ HD	(1)	(1)
G	990247-425-121	COTTER PIN, 1/4 X 2	(1)	(1)
H	990511-200-02	NUT, 1 1/8 HEAVY HEX SLOTTED	(1)	(1)
2	980500-047RX	CRANK STAND ASSEMBLY	0	1
A	980010-047R	CRANK	(0)	(1)
B	980015X	STAND ASSEMBLY	(0)	(1)
3	980500-047LX	CRANK STAND ASSEMBLY	1	0
A	980010-047L	CRANK	(1)	(0)
B	980015X	STAND ASSEMBLY	(1)	(0)
4	880032-003X	ROD ASSY, BOOSTER	1	1
A	880031-206	BOOSTER ROD	(1)	(1)
B	980020-004-02	ROD ASSY, TANGED SCREW JAW	(1)	(1)
C	980020-002-02	ROD ASSY, SOLID SCREW JAW	(1)	(1)
D	890800-175-00	RIVET, 1/4 x 1 11/16	(4)	(4)
5	980500-048RX	CRANK STAND ASSEMBLY	0	1
A	980010-048R	CRANK	(0)	(1)
B	980015X	STAND ASSEMBLY	(0)	(1)
6	980500-048LX	CRANK STAND ASSEMBLY	1	0
A	980010-048L	CRANK	(1)	(0)
B	980015X	STAND ASSEMBLY	(1)	(0)
7	840120-002X	ROD ASSEMBLY, OPERATING	1	1
A	840120-002	ROD, OPERATING	(1)	(1)
B	890590-005X	PIN ASSEMBLY, JAW	(1)	(1)
C	990331-125-02	NUT, 1 1/4 HEAVY HEX	(2)	(2)
8	980200-001X	PIPE CARRIER ASSEMBLY	4	4
9	990120-400-02	LAG SCREW, 1/2 X 4	8	8
10	910922-020-01	STUD ASSEMBLY, 3/4 X 13	4	4
11	990731-300-02	BOLT, 0.750 X 3.000 HEX	4	4
12	990331-075-02	NUT, 3/4 HEAVY HEX	4	4
13	990401-075-02	WASHER, 3/4 LOCK	4	4
14	995000-008	TIE SCREW, 24 X 165 MM	8	8
15	860020-001	TIE STRAP, OFFSET	4	4



TRANSIT

SWITCH HELPER ROD
LAYOUTS

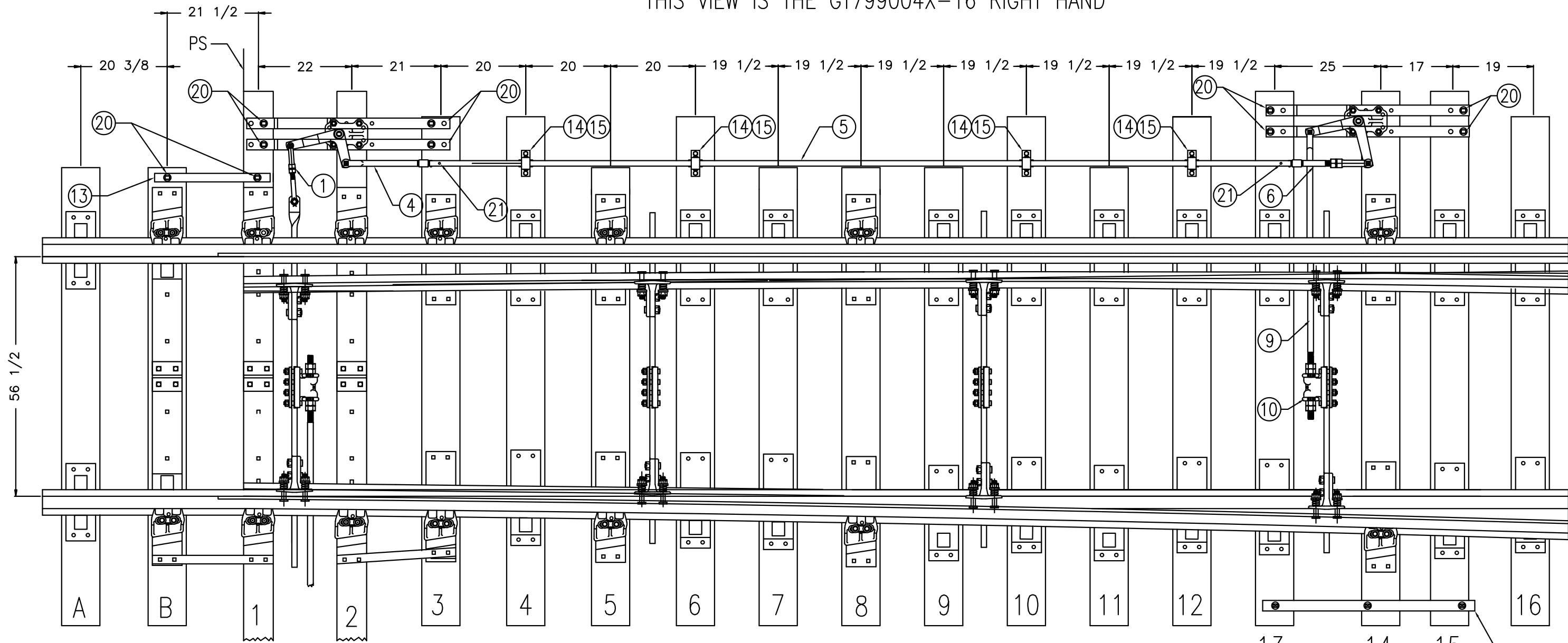
#16 RH AND LH

WITH PRE-ASSEMBLED BOOSTER RODS

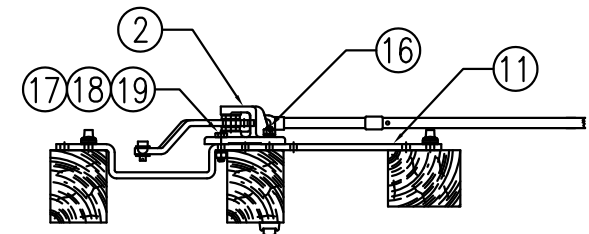
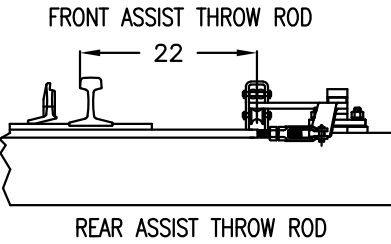
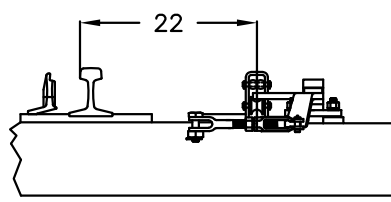
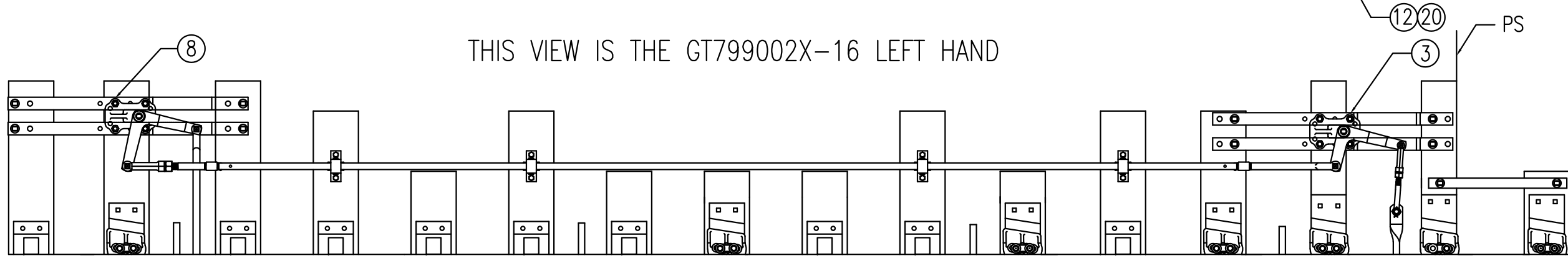
SIGNALS AND COMMUNICATIONS

REVISION	SHEET	APPROVED BY	DATE	SCP-10	GT799002X-16-01 GT799004X-16-01
0	2 OF 2	TC	10/15/20	PAGE 7	

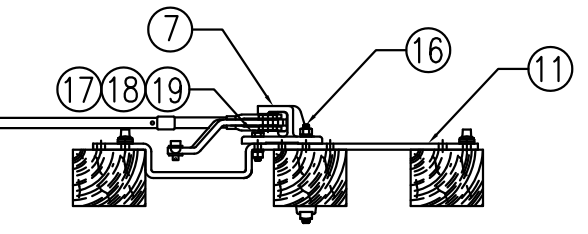
THIS VIEW IS THE GT799004X-16 RIGHT HAND



THIS VIEW IS THE GT799002X-16 LEFT HAND



Front Crank Assembly Detail



Rear Crank Assembly Detail



SWITCH HELPER ROD LAYOUTS #16 RH AND LH

SIGNALS AND COMMUNICATIONS

REVISION	SHEET	APPROVED BY	DATE	SCP-10	GT799002X-16
0	1 OF 2	TC	10/15/20	PAGE 8	GT799004X-16

ITEM	PART NUMBER	DESCRIPTION	GT799002X-16 QUANTITY	GT799004X-16 QUANTITY
1	980230-005X	ROD ASSY, FRONT ASSIST THROW	1	1
A	980230-005	ROD, FRONT ASSIST THROW	(1)	(1)
B	898010-001	SCREW JAW	(1)	(1)
C	890590-005X	PIN ASSEMBLY, JAW	(1)	(1)
D	990331-125-02	NUT, 1 1/4 HEAVY HEX	(1)	(1)
E	990401-125-02	WASHER, 1 1/4 LOCK	(1)	(1)
F	990247-425-121	BOLT, 1.125 X 4.250 SQ HD	(1)	(1)
G	990511-200-02	COTTER PIN, 1/4 X 2	(1)	(1)
H	990332-112-02	NUT, 1 1/8 HEAVY HEX SLOTTED	(1)	(1)
2	980500-047RX	CRANK STAND ASSEMBLY	0	1
A	980010-047R	CRANK	(1)	(1)
B	980015X	STAND ASSEMBLY	(1)	(1)
3	980500-047LX	CRANK STAND ASSEMBLY	1	0
A	980010-047L	CRANK	(1)	(0)
B	980015X	STAND ASSEMBLY	(1)	(0)
4	980020-002-02	ROD ASSY, TANGED SOLID JAW	1	1
5	880031-206	BOOSTER ROD	1	1
6	980020-004-02	ROD ASSY, TANGED SCREW JAW	1	1
7	980500-048RX	CRANK STAND ASSEMBLY	0	1
A	980010-048R	CRANK	(0)	(1)
B	980015X	STAND ASSEMBLY	(0)	(1)
8	980500-048LX	CRANK STAND ASSEMBLY	1	0
A	980010-048L	CRANK	(1)	(0)
B	980015X	STAND ASSEMBLY	(1)	(0)
9	840120-002X	ROD ASSEMBLY, OPERATING	1	1
A	840120-002	ROD, OPERATING	(1)	(1)
B	890590-005X	PIN ASSEMBLY, JAW	(1)	(1)
C	990331-125-02	NUT, 1 1/4 HEAVY HEX	(2)	(2)
10	950125-001-10	BASKET ASSEMBLY	1	1
11	860020-001	TIE STRAP, OFFSET	4	4
12	860021-001	TIE STRAP	1	1
13	860002-010	TIE STRAP	1	1
14	980200-001X	PIPE CARRIER ASSEMBLY	4	4
15	990120-400-02	LAG SCREW, 1/2 X 4	8	8
16	910922-020-01	STUD ASSEMBLY, 3/4 X 13	4	4
17	990731-300-02	BOLT, 0.750 X 3.000 HEX	4	4
18	990331-075-02	NUT, 3/4 HEAVY HEX	4	4
19	990401-075-02	WASHER, 3/4 LOCK	4	4
20	995000-008	TIE SCREW, 24 X 165 MM	13	13
21	890800-175-00	RIVET, 1/4 x 1 11/16	4	4



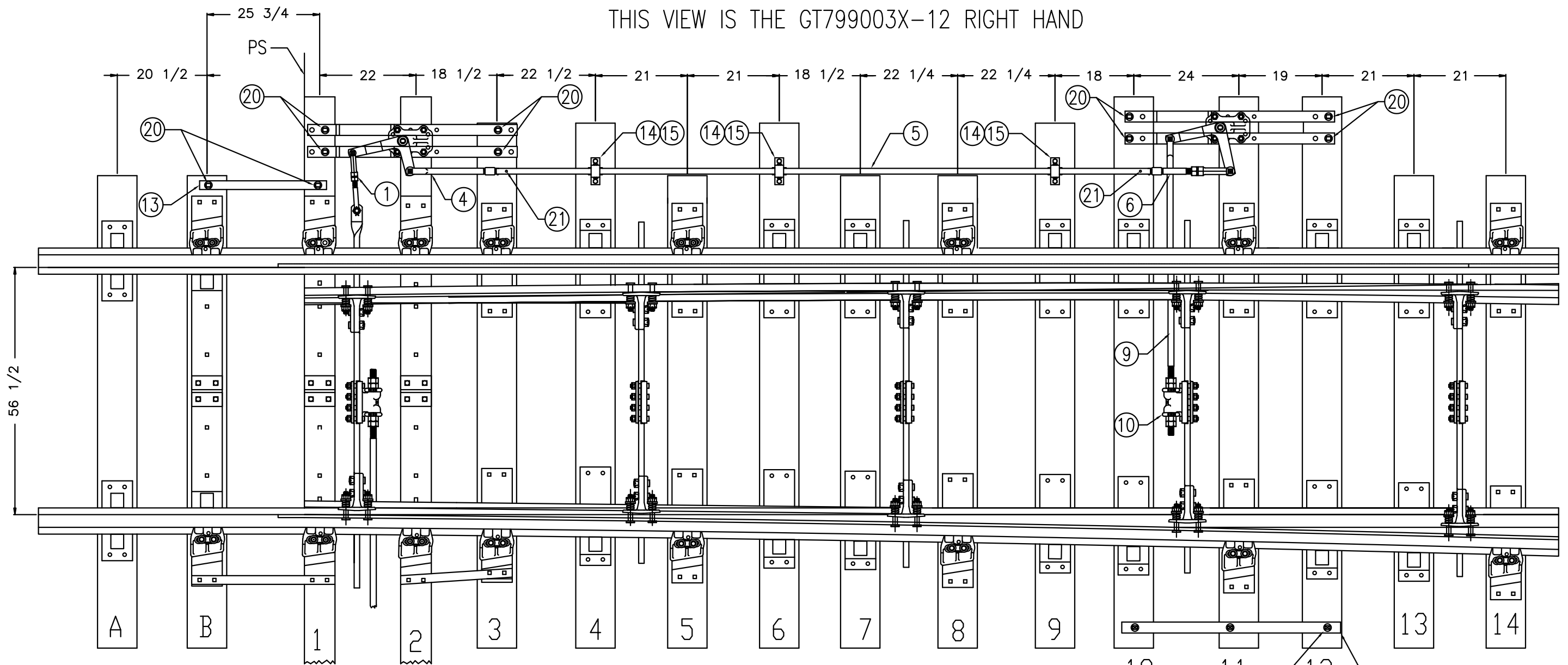
TRANSIT

SWITCH HELPER ROD
LAYOUTS
#16 RH AND LH

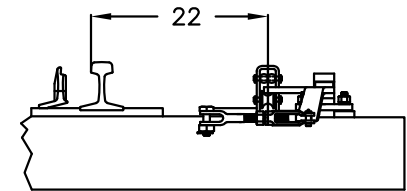
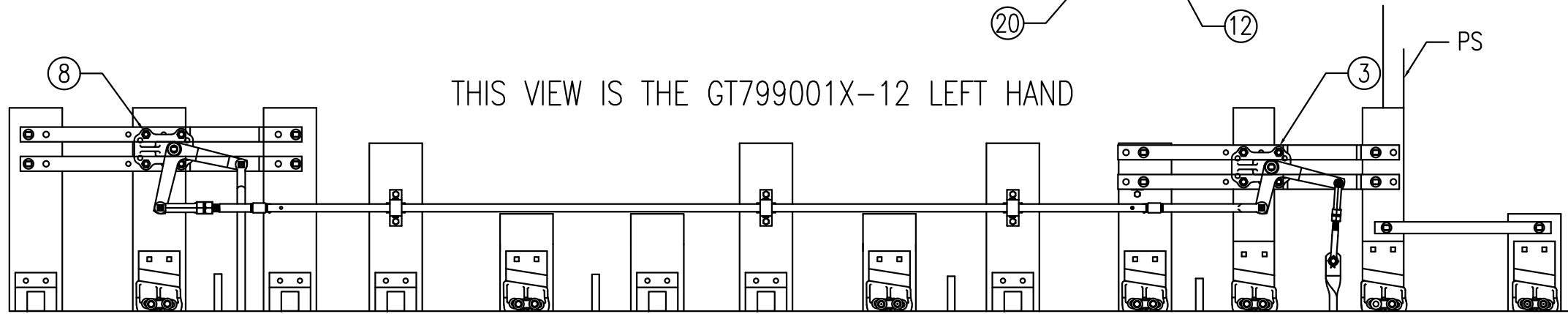
SIGNALS AND COMMUNICATIONS

REVISION	SHEET	APPROVED BY	DATE	SCP-10	GT799002X-16
0	2 OF 2	TC	10/15/20	PAGE 9	GT799004X-16

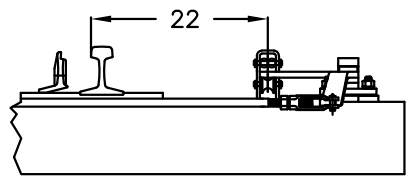
THIS VIEW IS THE GT799003X-12 RIGHT HAND



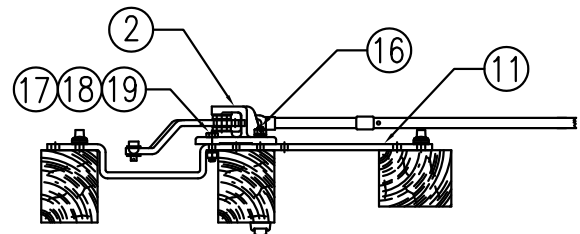
THIS VIEW IS THE GT799001X-12 LEFT HAND



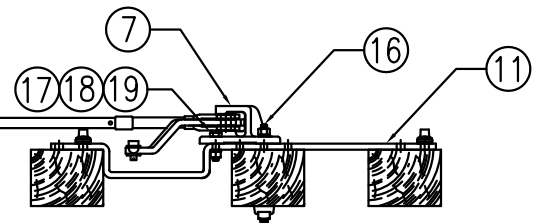
FRONT ASSIST THROW ROD



REAR ASSIST THROW ROD



Front Crank Assembly Detail



Rear Crank Assembly Detail



TRANSIT

SWITCH HELPER ROD
LAYOUTS
#12 RH AND LH

SIGNALS AND COMMUNICATIONS

REVISION	SHEET	APPROVED BY	DATE	SCP-10	GT799001X-12
0	1 OF 2	TC	10/15/20	PAGE 10	GT799003X-12

ITEM	PART NUMBER	DESCRIPTION	GT799001X-12 QUANTITY	GT799003X-12 QUANTITY
1	980230-005X	ROD ASSY, FRONT ASSIST THROW	1	1
A	980230-005	ROD, FRONT ASSIST THROW	(1)	(1)
B	898010-001	SCREW JAW	(1)	(1)
C	890590-005X	PIN ASSEMBLY, JAW	(1)	(1)
D	990331-125-02	NUT, 1 1/4 HEAVY HEX	(1)	(1)
E	990401-125-02	WASHER, 1 1/4 LOCK	(1)	(1)
F	990247-425-121	BOLT, 1.125 X 4.250 SQ HD	(1)	(1)
G	990511-200-02	COTTER PIN, 1/4 X 2	(1)	(1)
H	990332-112-02	NUT, 1 1/8 HEAVY HEX SLOTTED	(1)	(1)
2	980500-049RX	CRANK STAND ASSEMBLY	0	1
A	980010-049R	CRANK	(0)	(1)
B	980015X	STAND ASSEMBLY	(0)	(1)
3	980500-049LX	CRANK STAND ASSEMBLY	1	0
A	980010-049L	CRANK	(1)	(0)
B	980015X	STAND ASSEMBLY	(1)	(0)
4	980020-002-02	ROD ASSY, TANGED SOLID JAW	1	1
5	880031-152	BOOSTER ROD	1	1
6	980020-004-02	ROD ASSY, TANGED SCREW JAW	1	1
7	980500-047RX	CRANK STAND ASSEMBLY	0	1
A	980010-047R	CRANK	(0)	(1)
B	980015X	STAND ASSEMBLY	(0)	(1)
8	980500-047LX	CRANK STAND ASSEMBLY	1	0
A	980010-047L	CRANK	(1)	(0)
B	980015X	STAND ASSEMBLY	(1)	(0)
9	840120-002X	ROD ASSEMBLY, OPERATING	1	1
A	840120-002	ROD, OPERATING	(1)	(1)
B	890590-005X	PIN ASSEMBLY, JAW	(1)	(1)
C	990331-125-02	NUT, 1 1/4 HEAVY HEX	(2)	(2)
10	950125-001-10	BASKET ASSEMBLY	1	1
11	860020-001	TIE STRAP, OFFSET	4	4
12	860021-001	TIE STRAP	1	1
13	860002-010	TIE STRAP	1	1
14	980200-001X	PIPE CARRIER ASSEMBLY	3	3
15	990120-400-02	LAG SCREW, 1/2 X 4	6	6
16	910922-020-01	STUD ASSEMBLY, 3/4 X 13	4	4
17	990731-300-02	BOLT, 0.750 X 3.000 HEX	4	4
18	990331-075-02	NUT, 3/4 HEAVY HEX	4	4
19	990401-075-02	WASHER, 3/4 LOCK	4	4
20	995000-008	TIE SCREW, 24 X 165 MM	13	13
21	890800-175-00	RIVET, 1/4 x 1 11/16	4	4



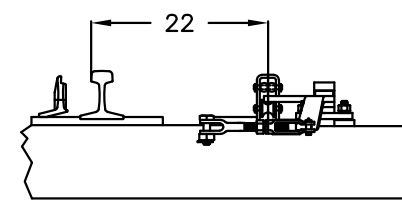
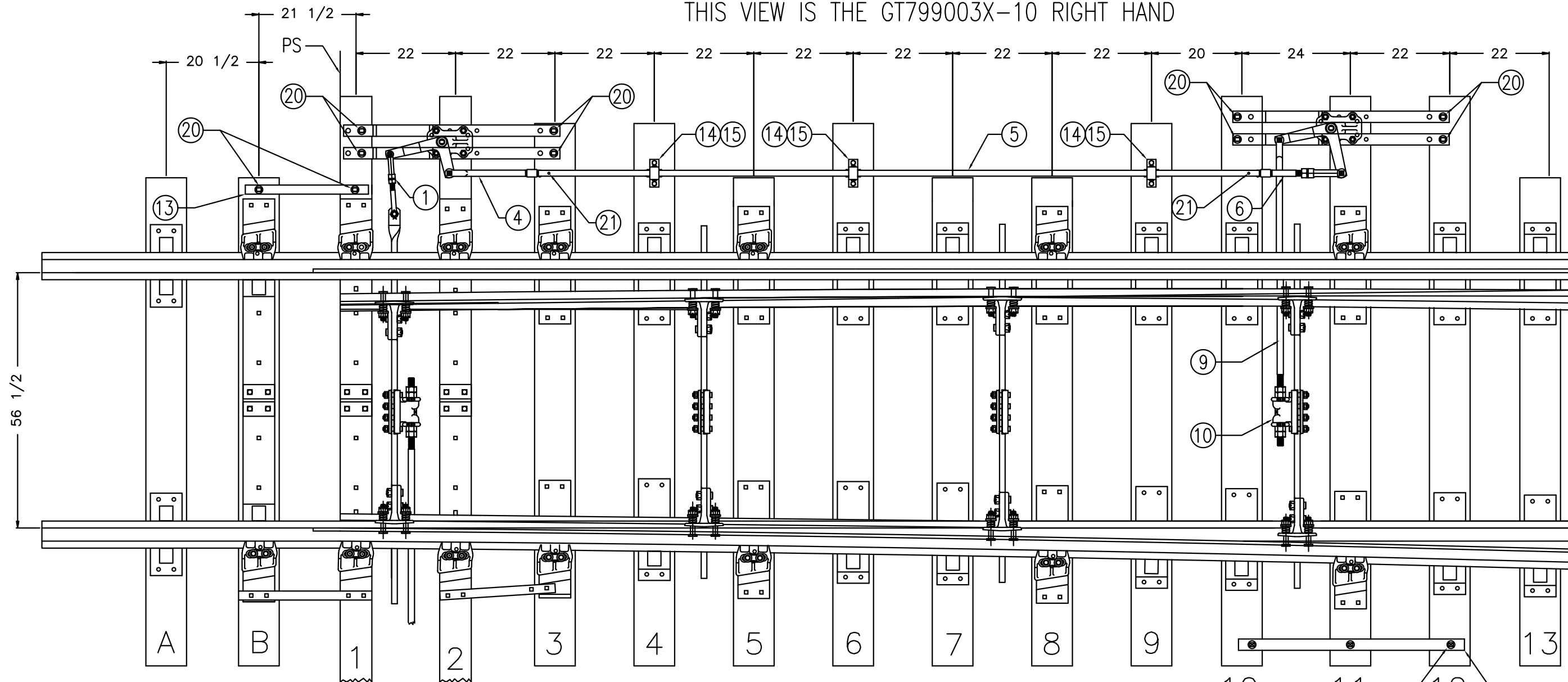
TRANSIT

SWITCH HELPER ROD
LAYOUTS
#12 RH AND LH

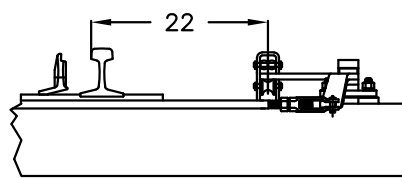
SIGNALS AND COMMUNICATIONS

REVISION	SHEET	APPROVED BY	DATE	SCP-10	GT799001X-12 GT799003X-12
0	2 OF 2	TC	10/15/20	PAGE 11	

THIS VIEW IS THE GT799003X-10 RIGHT HAND

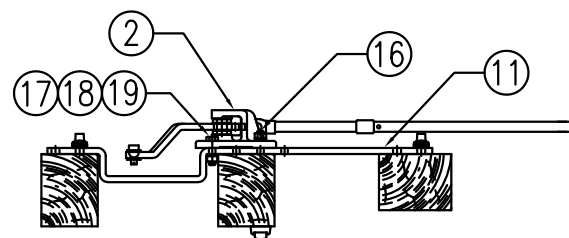
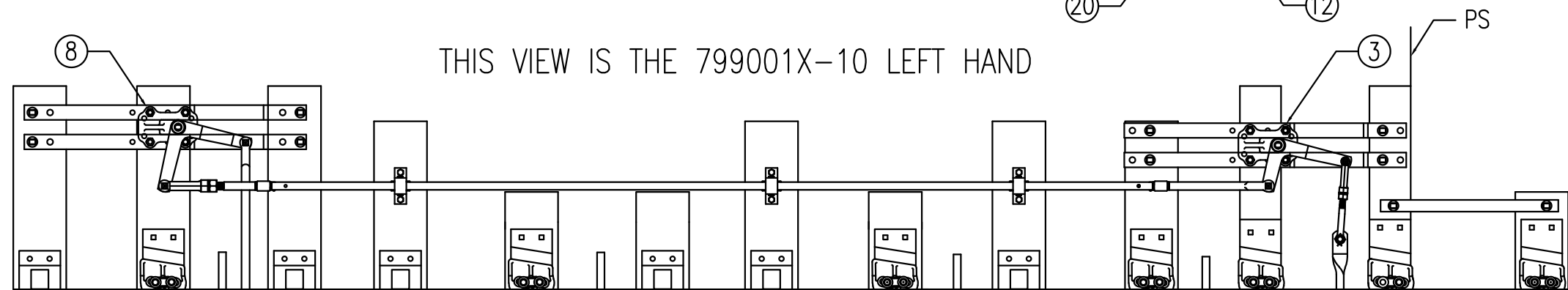


FRONT ASSIST THROW ROD

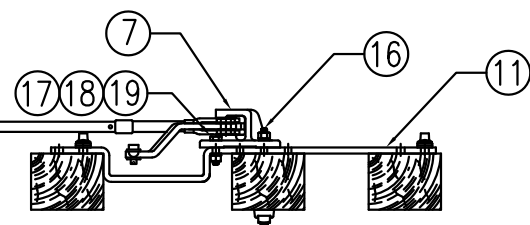


REAR ASSIST THROW ROD

THIS VIEW IS THE 799001X-10 LEFT HAND



Front Crank Assembly Detail



Rear Crank Assembly Detail



TRANSIT

SWITCH HELPER ROD LAYOUTS #10 RH AND LH

SIGNALS AND COMMUNICATIONS

REVISION	SHEET	APPROVED BY	DATE	SCP-10	GT799001X-10
0	1 OF 2	TC	10/15/20	PAGE 12	GT799003X-10

ITEM	PART NUMBER	DESCRIPTION	GT799001X-10 QUANTITY	GT799003X-10 QUANTITY
1	980230-005X	ROD ASSY, FRONT ASSIST THROW	1	1
A	980230-005	ROD, FRONT ASSIST THROW	(1)	(1)
B	898010-001	SCREW JAW	(1)	(1)
C	890590-005X	PIN ASSEMBLY, JAW	(1)	(1)
D	990331-125-02	NUT, 1 1/4 HEAVY HEX	(1)	(1)
E	990401-125-02	WASHER, 1 1/4 LOCK	(1)	(1)
F	990247-425-121	BOLT, 1.125 X 4.250 SQ HD	(1)	(1)
G	990511-200-02	COTTER PIN, 1/4 X 2	(1)	(1)
H	990332-112-02	NUT, 1 1/8 HEAVY HEX SLOTTED	(1)	(1)
2	980500-049RX	CRANK STAND ASSEMBLY	0	1
A	980010-049R	CRANK	(0)	(1)
B	980015X	STAND ASSEMBLY	(0)	(1)
3	980500-049LX	CRANK STAND ASSEMBLY	1	0
A	980010-049L	CRANK	(1)	(0)
B	980015X	STAND ASSEMBLY	(1)	(0)
4	980020-002-02	ROD ASSY, TANGED SOLID JAW	1	1
5	880031-160	BOOSTER ROD	1	1
6	980020-004-02	ROD ASSY, TANGED SCREW JAW	1	1
7	980500-047RX	CRANK STAND ASSEMBLY	0	1
A	980010-047R	CRANK	(0)	(1)
B	980015X	STAND ASSEMBLY	(0)	(1)
8	980500-047LX	CRANK STAND ASSEMBLY	1	0
A	980010-047L	CRANK	(1)	(0)
B	980015X	STAND ASSEMBLY	(1)	(0)
9	840120-002X	ROD ASSEMBLY, OPERATING	1	1
A	840120-002	ROD, OPERATING	(1)	(1)
B	890590-005X	PIN ASSEMBLY, JAW	(1)	(1)
C	990331-125-02	NUT, 1 1/4 HEAVY HEX	(2)	(2)
10	950125-001-10	BASKET ASSEMBLY	1	1
11	860020-001	TIE STRAP, OFFSET	4	4
12	860021-001	TIE STRAP	1	1
13	860002-010	TIE STRAP	1	1
14	980200-001X	PIPE CARRIER ASSEMBLY	3	3
15	990120-400-02	LAG SCREW, 1/2 X 4	6	6
16	910922-020-01	STUD ASSEMBLY, 3/4 X 13	4	4
17	990731-300-02	BOLT, 0.750 X 3.000 HEX	4	4
18	990331-075-02	NUT, 3/4 HEAVY HEX	4	4
19	990401-075-02	WASHER, 3/4 LOCK	4	4
20	995000-008	TIE SCREW , 24 X 165 MM	13	13
21	890800-175-00	RIVET, 1/4 x 1 11/16	4	4



TRANSIT

SWITCH HELPER ROD
LAYOUTS
#10 RH AND LH

SIGNALS AND COMMUNICATIONS

REVISION	SHEET	APPROVED BY	DATE	SCP-10	GT799001X-10
0	2 OF 2	TC	10/15/20	PAGE 13	GT799003X-10