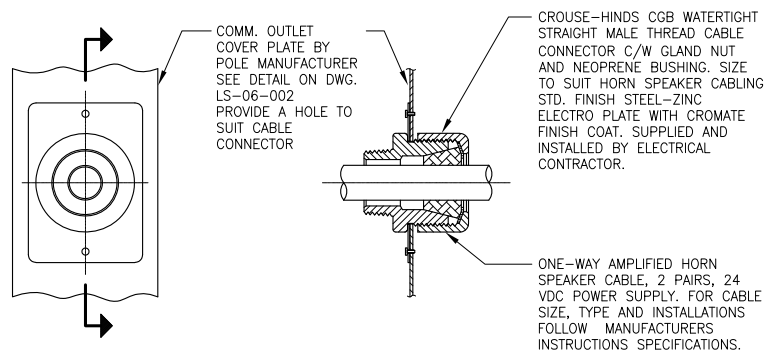


- NOTES:

1. THIS TYPICAL 6mT RECTANGULAR SQUARE GALVANIZED STEEL POLE ASSEMBLY IS GENERAL GUIDANCE FOR ELECTRICAL INSTALLATION APPLICABLE TO PLATFORM, BUS LOADING, KISS & RIDE AND WALKWAY AREA LIGHTING. FOR CONCRETE FOUNDATION REQUIREMENT, REFER TO LAYOUT DRAWINGS AND CONCRETE FOUNDATION REINFORCEMENT TABLE ON STANDARD DRAWING LS-06-003.
2. FOR APPLICABLE LUMINAIRE MOUNTING HEIGHTS SEE NOTE 1 ABOVE.
3. THE HORIZONTAL AND VERTICAL TRACK CLEARANCES FOR ALL PLATFORM LIGHTING POLE INSTALLATIONS SHALL COMPLY WITH THE LATEST CANADIAN NATIONAL AND/OR CANADIAN PACIFIC RAILWAYS STANDARD CLEARANCE DIAGRAM. THE DESIGNER TO DETERMINE EXACT DISTANCE AND MUST OBTAIN WRITTEN APPROVALS BEFORE ANY WORK IS STARTED.
4. SECOND LUMINAIRE IS USUALLY NECESSARY FOR CENTRE PLATFORM LIGHTING OR AS DETERMINED BY SITE CONDITIONS; REFER TO LAYOUT DRAWINGS.
5. LUMINAIRE MATERIAL AND FINISH AS PER SPECIFICATION. COLOR TO BE PLATINUM SILVER. LUMINAIRE MANUFACTURER TO SUPPLY VERTICAL SLIP FITTER MOUNTS.
6. COMMUNICATION HARDWARE AND WIRING SUPPLIED AND INSTALLED AS SPECIFIED. FOR EXACT LOCATION OF SPEAKER/CAMERA, REFER TO LAYOUT DRAWINGS.
7. GROUNDING RODS TO BE LOCATED AT BASE OF EVERY OTHER POLE OR EVERY 50M (PLATFORM ONLY.)
8. ORIENTATE POLE SUCH THAT HANDHOLES POINT DOWN THE LENGTH OF THE PLATFORM.

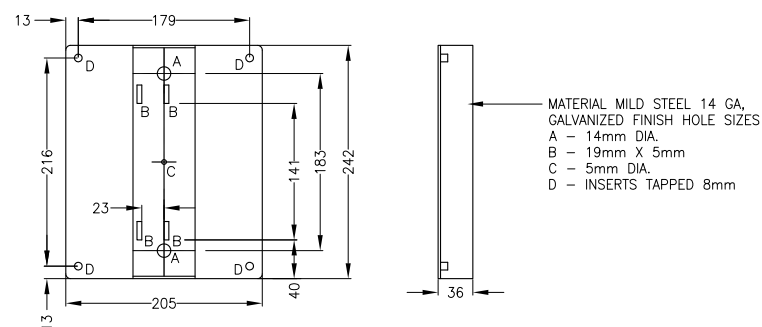


FRONT VIEW

SECTION

## DETAIL

COMM. WIRING OUTLET

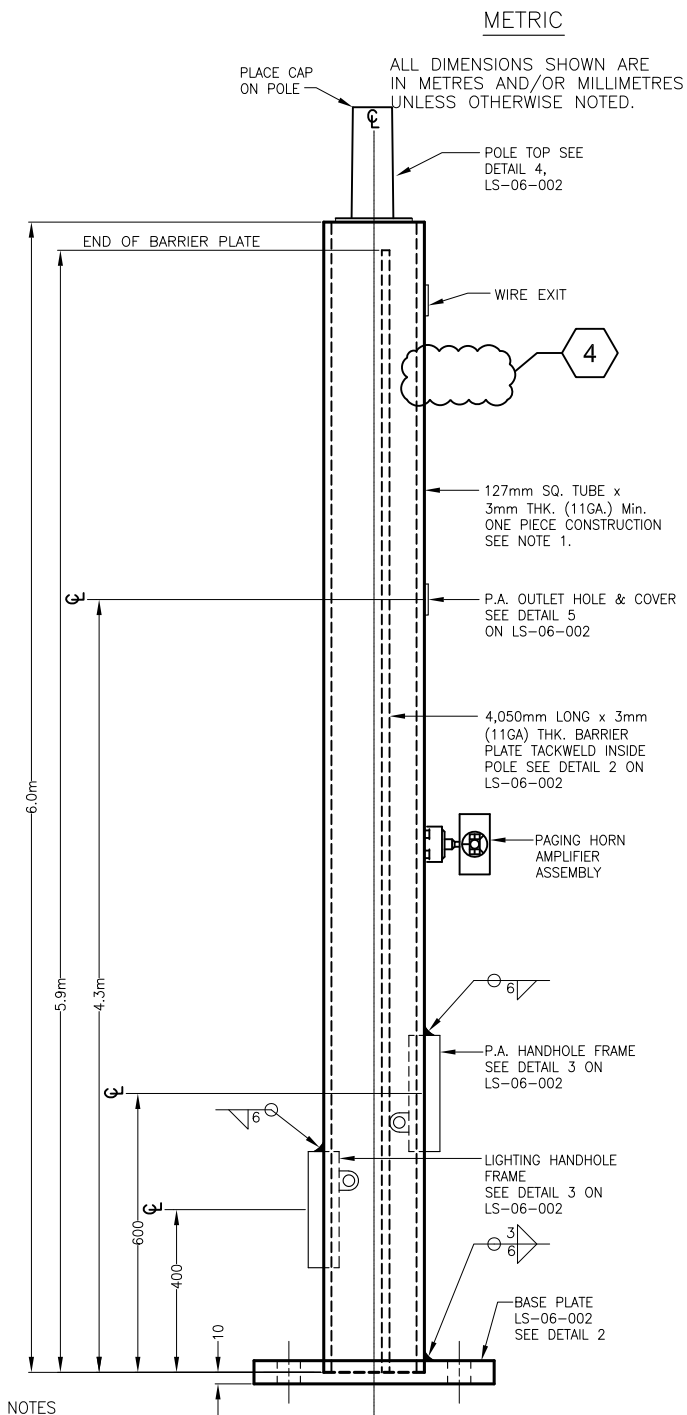


**FRONT VIEW**

LEFT SIDE VIEW

## DETAIL

## P.A. MOUNTING BRACKET



## DETAIL

POLE SHAFT

- ## NOTES

1. LIGHTING POLE CONSTRUCTION AND COMPONENTS SHALL BE HOT DIP GALVANIZED STEEL C.S.A. G40.21-44 W MINIMUM WITH 50Ksi YIELD
2. ALL WELDING TO CONFORM TO THE SPECIFICATIONS OF THE C.W.B. W47.1 AND W59 FULLY APPROVED C.S.A. QUALITY PROGRAM STANDARD CAN3-2299.3-1979, DESIGNED TO AASHTO WITH 80MPH WIND SPEED & 1.3 GUST FACTOR, DESIGNED FOR MAXIMUM EPA OF 10.
3. ALL FASTENERS TO BE STAINLESS STEEL EXCEPT WHERE NOTED OTHERWISE.
4. POLE MANUFACTURER SHALL SUPPLY BOLTS, NUTS AND WASHERS TO TO SUIT DESIGN SPECIFIED IN NOTE 2 ABOVE.


METROLINX PROJECT NO. XXXXXX



FACILITY

## 6m POLE FOR SPEAKERS, LIGHT, AND SIGNS

### ELEVATION AND DETAILS

REFERENCE DRAWINGS		ISSUE		REVISIONS		DRAWN BY: X.X.X. YY/MM/DD	DESIGNED BY: YY/MM/DD			 A Division of METROLINX	FACILITY 6m POLE FOR SPEAKERS, LIGHT, AND SIGNS ELEVATION AND DETAILS			
						CHECKED BY: YY/MM/DD	APPROVED BY: YY/MM/DD				CONTRACT NO.	DWG. NO. LS-06-001	REV. 4	SHEET
				4	22/02/18	REMOVED CCTV INFORMATION								
				2	20/12/13	DISCLAIMER NOTE								
				1	10/01/12	NAME UPDATE								
DWG NO.	TITLE	NO.	DATE	ISSUED FOR	REV.	DATE	SCALE: N.T.S.	FULL SIZE ONLY						