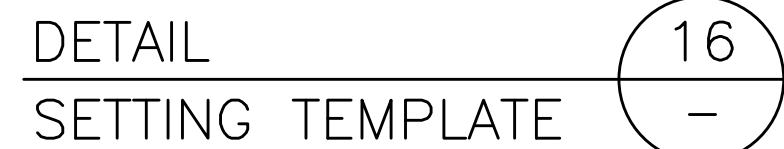




1. BROKEN LINES INDICATE ADDITIONAL CONDUCTORS FOR DOUBLE LUMINAIRE INSTALLATION AND / OR ALTERNATE CIRCUIT IN ACCORDANCE WITH PLATFORM LIGHTING AND WIRING DIAGRAM DRAWINGS.
2. IN-LINE WATERPROOF FUSEHOLDER 600V, 30A WITH BREAKAWAY FEATURE, GOULD GEB-11-11 C/W WATERPROOF INSULATING BOOTS AND ONE 10 AMP FUSE TYPE KTK 600 VOLTS OR APPROVED EQUAL.
3. ALL GROUNDING WIRES TO BE FITTED WITH COMPRESSION LUGS BEFORE SECURING TO GROUND STUD IN POLE.

NOTE:
THIS DRAWING IS PROVIDED FOR INSTRUCTIONAL DESIGN PURPOSES ONLY BASED ON METROLINX GO TRANSIT DESIGN GUIDELINES AND REQUIREMENTS. THE CONSULTANT SHALL VERIFY FOR LOCAL CODE COMPLIANCE, EXISTING SITE CONDITIONS AND INTER DISCIPLINARY DRAWING COORDINATION. ALL DIMENSIONS AND SPECIFICATIONS SHOULD BE VERIFIED BY CONSULTANT AND/OR CONTRACTOR BEFORE ACTUAL CONSTRUCTION BEGINS.



METRIC

ALL DIMENSIONS SHOWN ARE
IN METRES AND/OR MILLIMETRES
UNLESS OTHERWISE NOTED.



- NOTES:

1. RIGID DUCTS AND FITTINGS SHALL BE RIGID PVC AND SHALL MEET THE REQUIREMENTS OF CSA STANDARD.
2. ANCHOR BOLTS, HEX NUTS AND WASHERS SHALL BE MADE OF SAE 10-30 STEEL AND WILL BE HOT DIP GALVANIZED IN ACCORDANCE WITH CSA STANDARD G-164 SPECIFICATIONS.
3. STUDS WILL BE GIVEN A LIBERAL COATING OF WHITE NON-STAINING GREASE.
4. EACH ANCHORAGE ASSEMBLY SHALL BE FINISHED WITH ONE SETTING TEMPLATE FOR ACCURATE POSITION OF THE ANCHORAGE ASSEMBLY AND CONDUITS WITHIN THE FORM. TEMPLATE TO BE REMOVED AFTER CONCRETE HARDENS.

DETAIL

ANCHORAGE ASSEMBLY



METROLINX PROJECT NO. XXXXXX

[illegible]