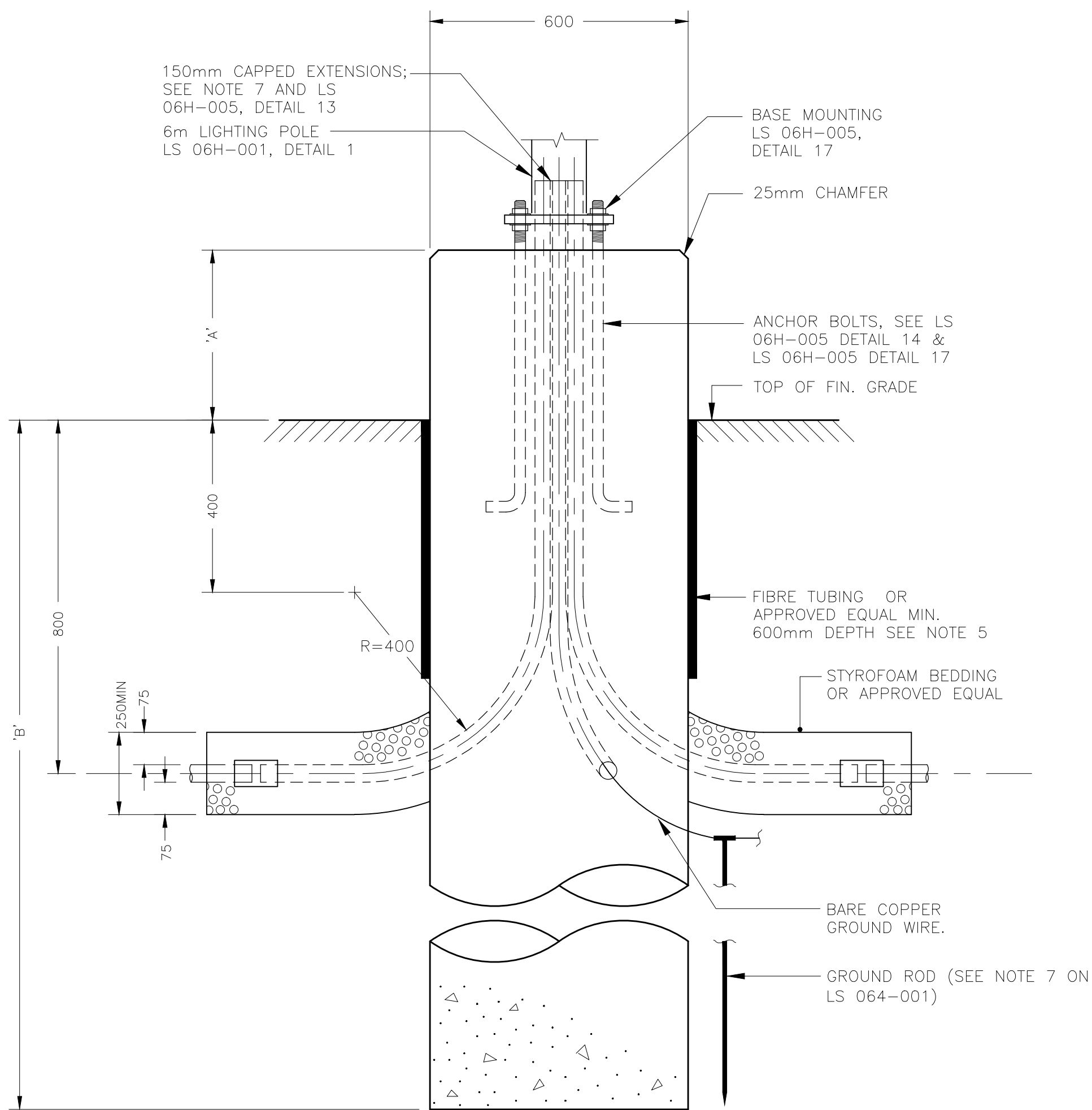
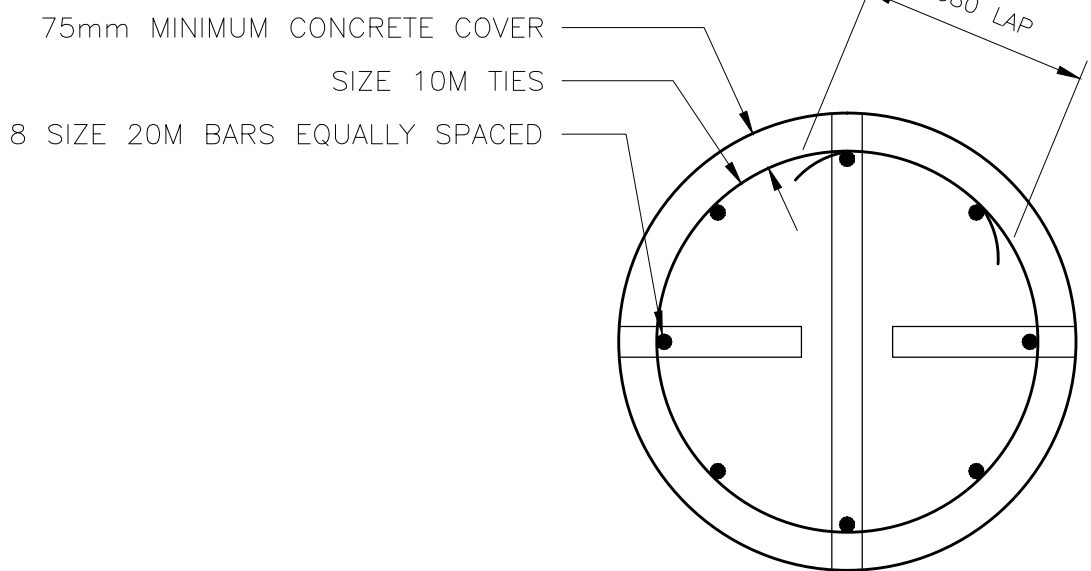
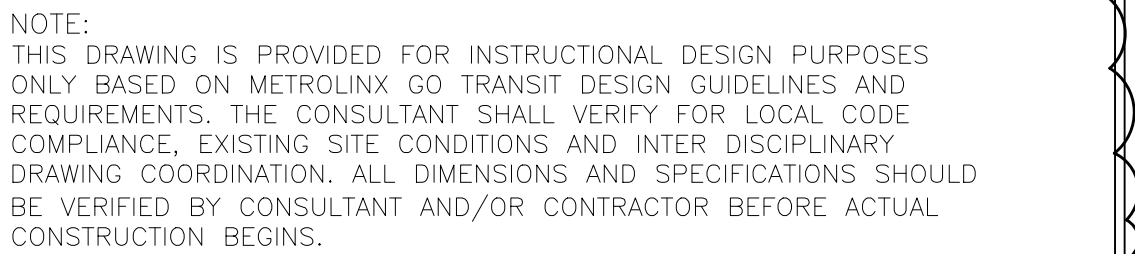
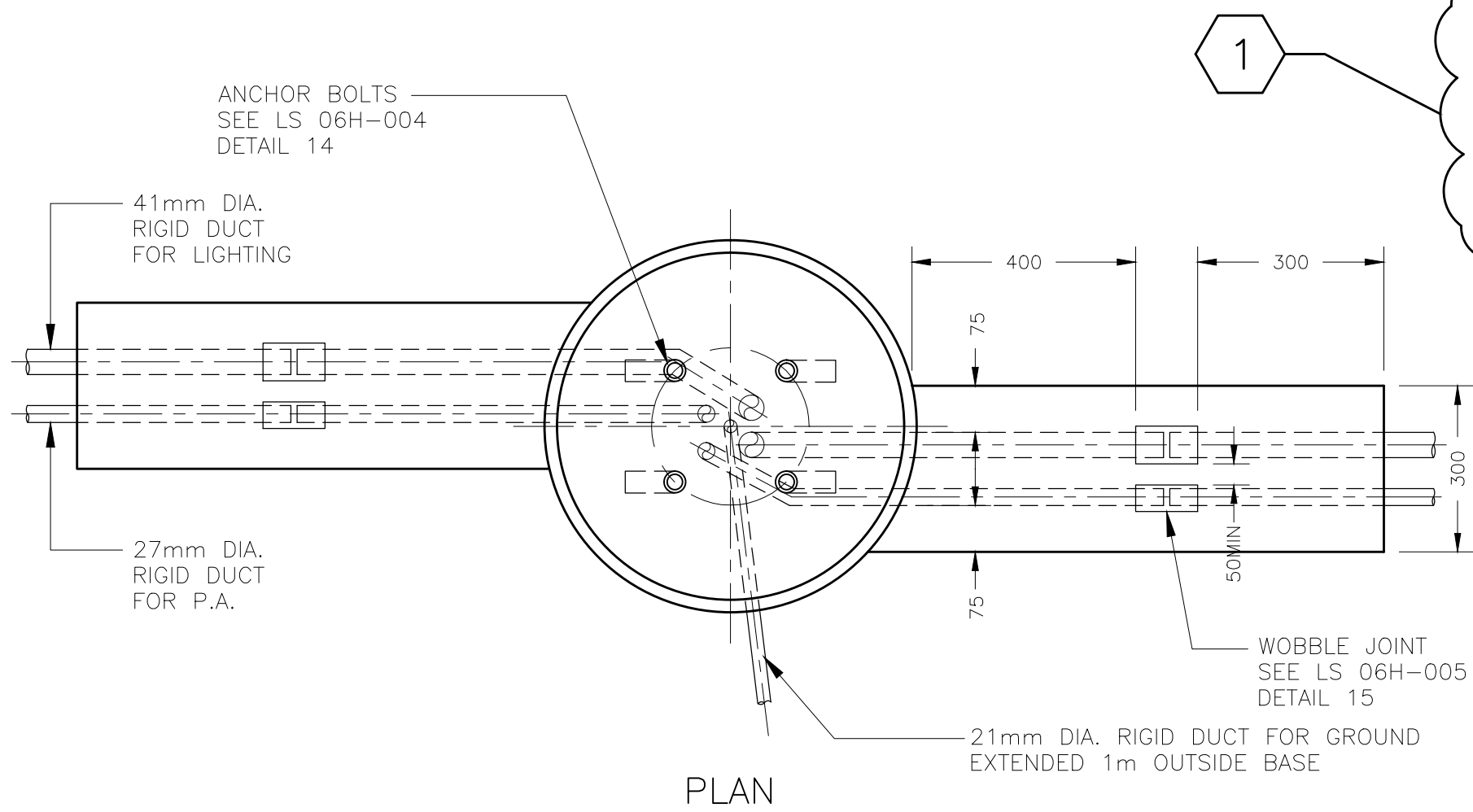


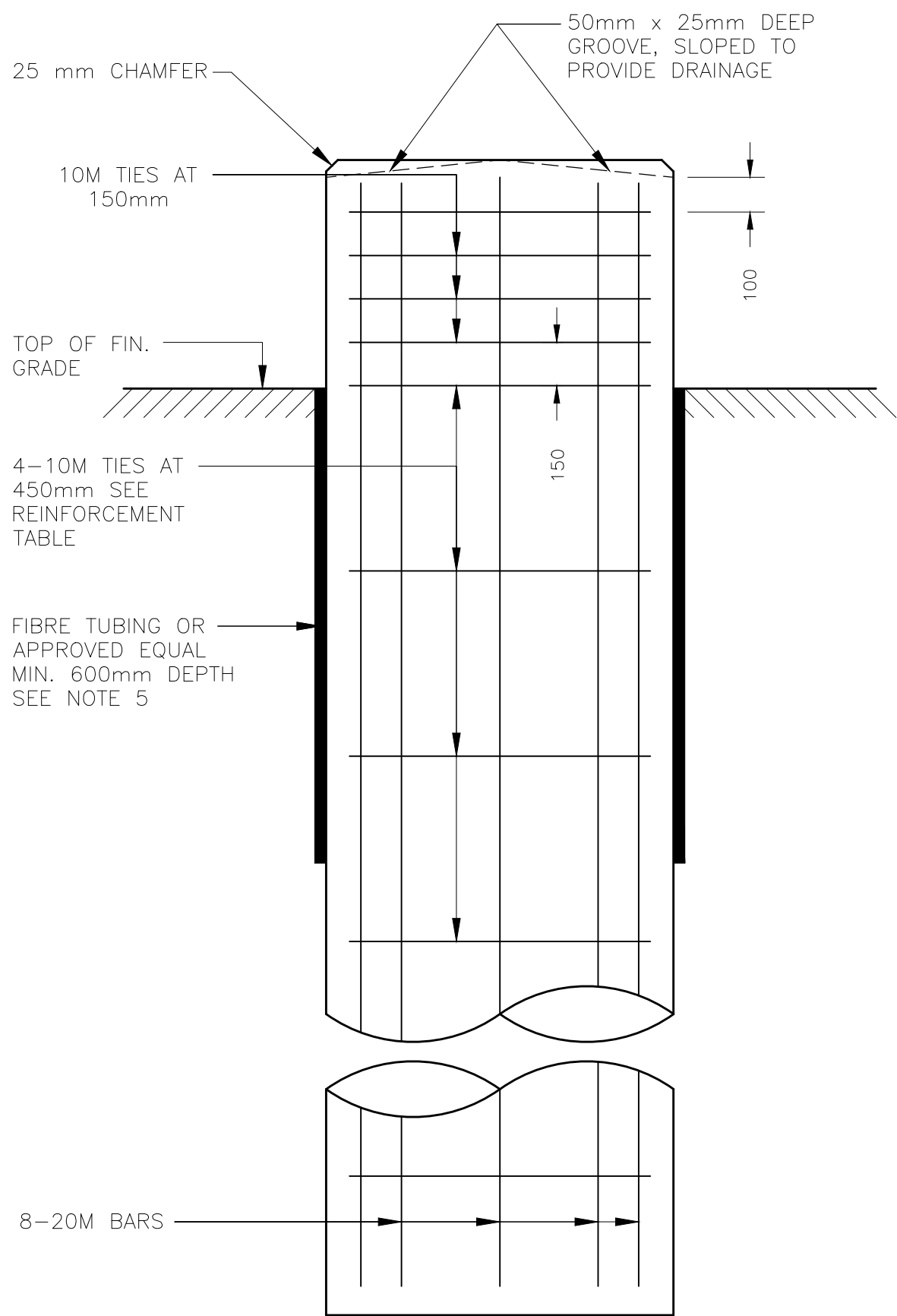
1. CONCRETE COMPRESSIVE STRENGTH SHALL BE 30 MPa AT 28 DAYS. PROVIDE 6 % AIR ENTRAINMENT.
2. REINFORCING SHALL CONFORM TO C.S.A. SPECIFICATION G 30.12 M (MIN. YIELD STRENGTH OF 400 MPa)
3. CONCRETE IN FOUNDATION SHALL BE PLACED AGAINST UNDISTURBED GROUND.
4. TOP OF FOUNDATION SHALL BE TRUE LEVEL.
5. AFTER CONCRETE HARDENS THE FIBRE TUBING TO BE PEELED OFF FROM THE TOP TO THE FINISH GRADE AS INDICATED IN REINFORCEMENT TABLE COLUMN 'A'.
6. ALL RIGID DUCTS AND FITTINGS SHALL BE 'PVC' OR 'FIBRE REINFORCED' AS INDICATED ON LAYOUT DRAWINGS AND SHALL MEET THE REQUIREMENTS OF C.S.A. STANDARDS.
7. NO CONDUITS SHALL BE SET IN CONCRETE BASE WITHOUT ANCHOR SETTING TEMPLATE.

CONCRETE FOUNDATION REINFORCEMENT TABLE							
AREA	POLE LENGTH	BOLT CIRCLE DIAMETER	FOUND. HEIGHT ABOVE GRADE 'A'	NORMAL BURIAL DEPTH 'B'	LENGTH OF VERT. REINF.	NO. OF TIES	
						150mm C/C	450mm C/C
RAIL PLATFORM & WALKWAYS	6m	254mm	300mm	2.95m	2.95m	4	3
BUS, PLATFORM, LOADING, KISS & RIDE AND POLES	6m	254mm	900mm	2.50m	3.25m	4	5



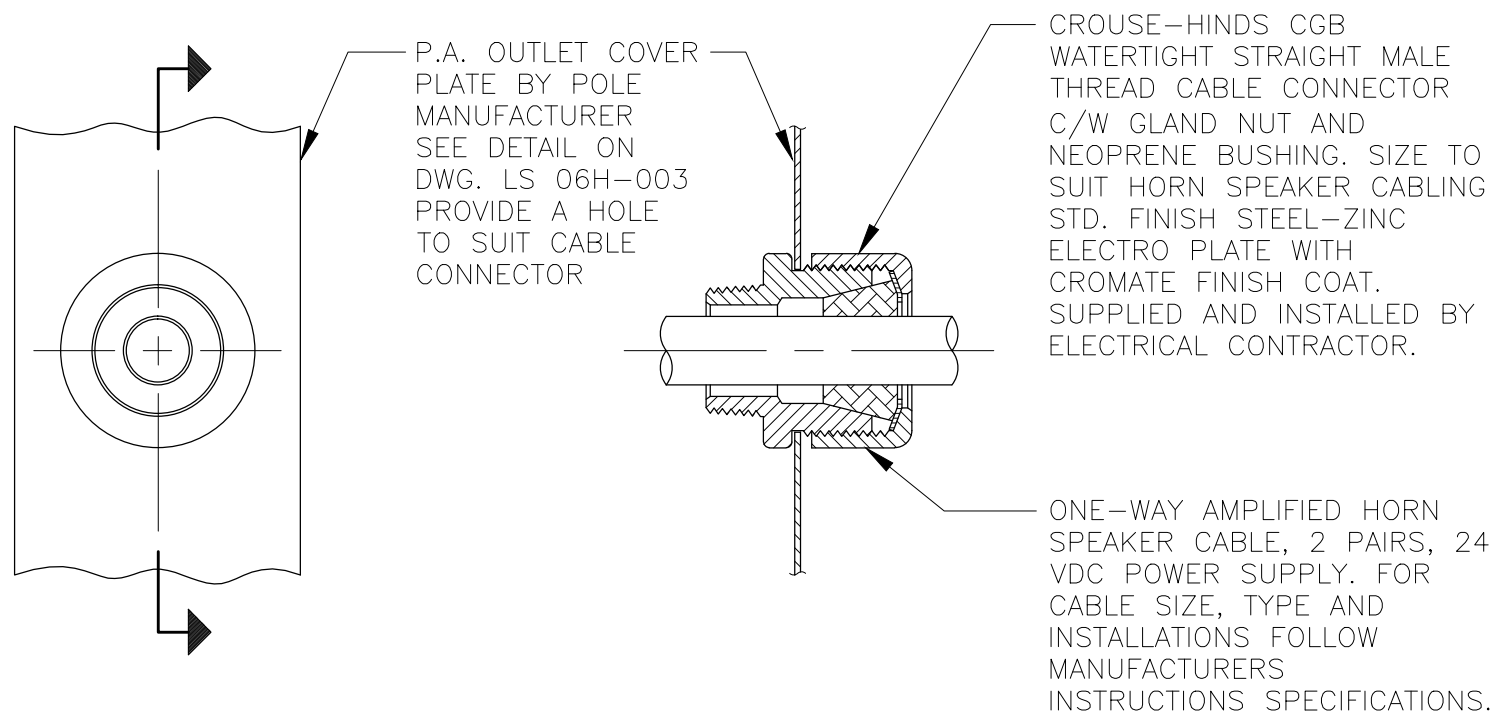
## DETAIL

### CONCRETE FOUNDATION DIMENSIONS



## DETAIL

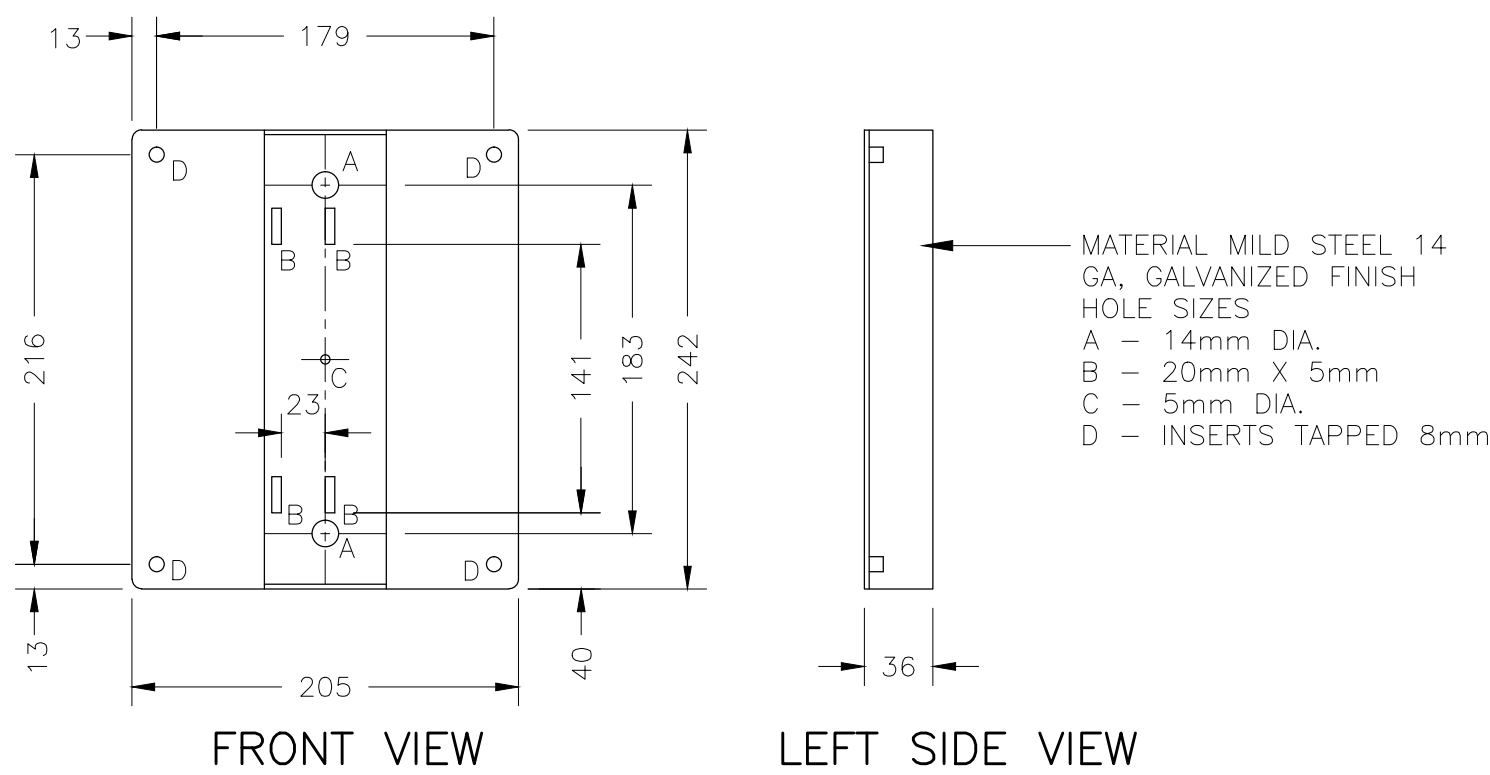
### CONCRETE FOUNDATION REINFORCEMENT



DETAIL

---

P.A. WIRING OUTLET




DETAIL

---

P.A. MOUNTING BRACKET

METROLINX PROJECT NO. XXXXXX

REFERENCE DRAWINGS		ISSUE		REVISIONS		DRAWN BY: X.X.X. YY/MM/DD	DESIGNED BY: YY/MM/DD				<div> A Division of METROLINX</div>	XXXXXXXXX STATION 6M LIGHT STANDARD-HINGED POLE FOUNDATION DETAILS					
						CHECKED BY: YY/MM/DD	APPROVED BY: YY/MM/DD					CONTRACT NO. XX-200X-EN-XXX		DWG. NO. LS 06H-004		REV. 1	SHEET 1
DWG NO.	TITLE	NO.	DATE	ISSUED FOR	REV.	DATE	NAME UPDATE	SCALE: 1:XXX	FULL SIZE ONLY								
		0	09/07/17	ISSUED FOR CLIENT REVIEW	1	DEC 2013	DISCLAIMER NOTE										
		0	JAN 2013		0	JAN 2013	NAME UPDATE										