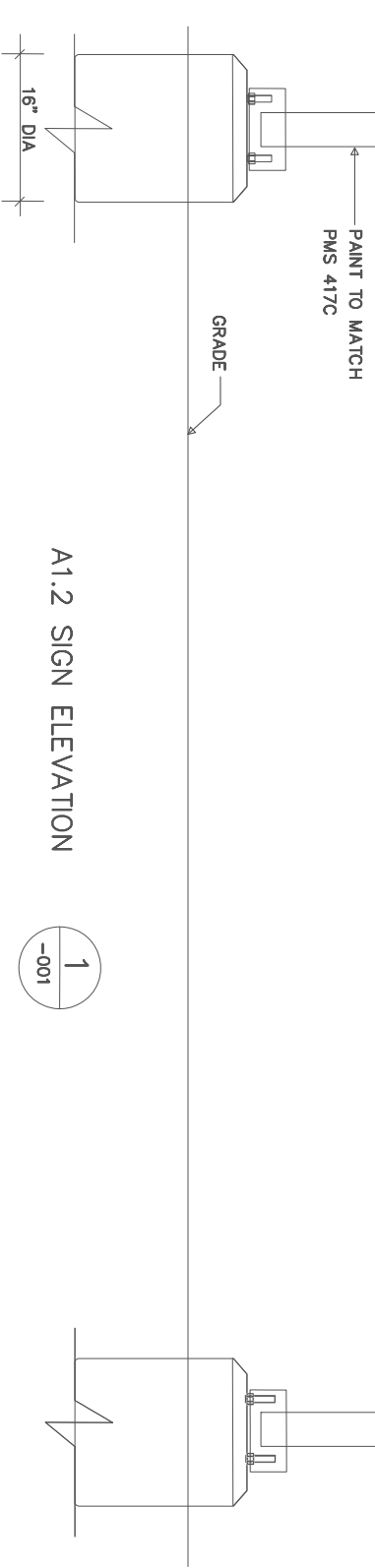


3658 mm

610 mm  
24 Hour Rd  
Allandale Waterfront



A1.2 SIGN ELEVATION

1  
-001

FOR CURRENT DETAILED ARTWORK, REFER TO THE GO STATIC SIGNAGE CATALOGUE CONTENT WILL VARY DEPENDING ON LOCATION

PANEL TO BE APPLIED WITH ENGINEER GRADE REFLECTIVE SHEETING (WHITE)

CUT FLANGES OF VERTICAL C CHANNEL INSERT INTO TOP AND BOTTOM HORIZONTAL MEMBERS AND WELD IN PLACE

FASTENING TABS (SIGN FACE)

100X100 X 6MM WALL ALUMINUM TUBE POST.

FASTENING POINTS (SIGN FACE)

INTERIOR ALUMINUM C-CHANNELS 100 X 38 X 4MM (4" X 1.5" X 1/8")

SIGN PANEL TO BE FABRICATED FROM 3MM (1") ALUMINUM SHEETING

SIGN BASE

PLAN SIGN ASSEMBLY SECTION

3  
-001

A2.1 Signtype

METROLINX PROJECT NO. XXXXXX

METRIC  
ALL DIMENSIONS SHOWN ARE IN METRES AND/OR MILLIMETRES UNLESS OTHERWISE NOTED.

ALL SIGN FASTENERS TO BE STAINLESS STEEL

SIGN FACE SLOT CUT IN OUTSIDE FACE OF SIGN POST

TOP CAP FASTENING PLATE WELDED IN POST

SIGN FACE

4  
-001  
SIGN FACE PANEL FASTENING PLAN

ALL SIGN FASTENERS TO BE STAINLESS STEEL

TOP CAP FASTENING PLATE WELDED IN POST

SIGN FACE

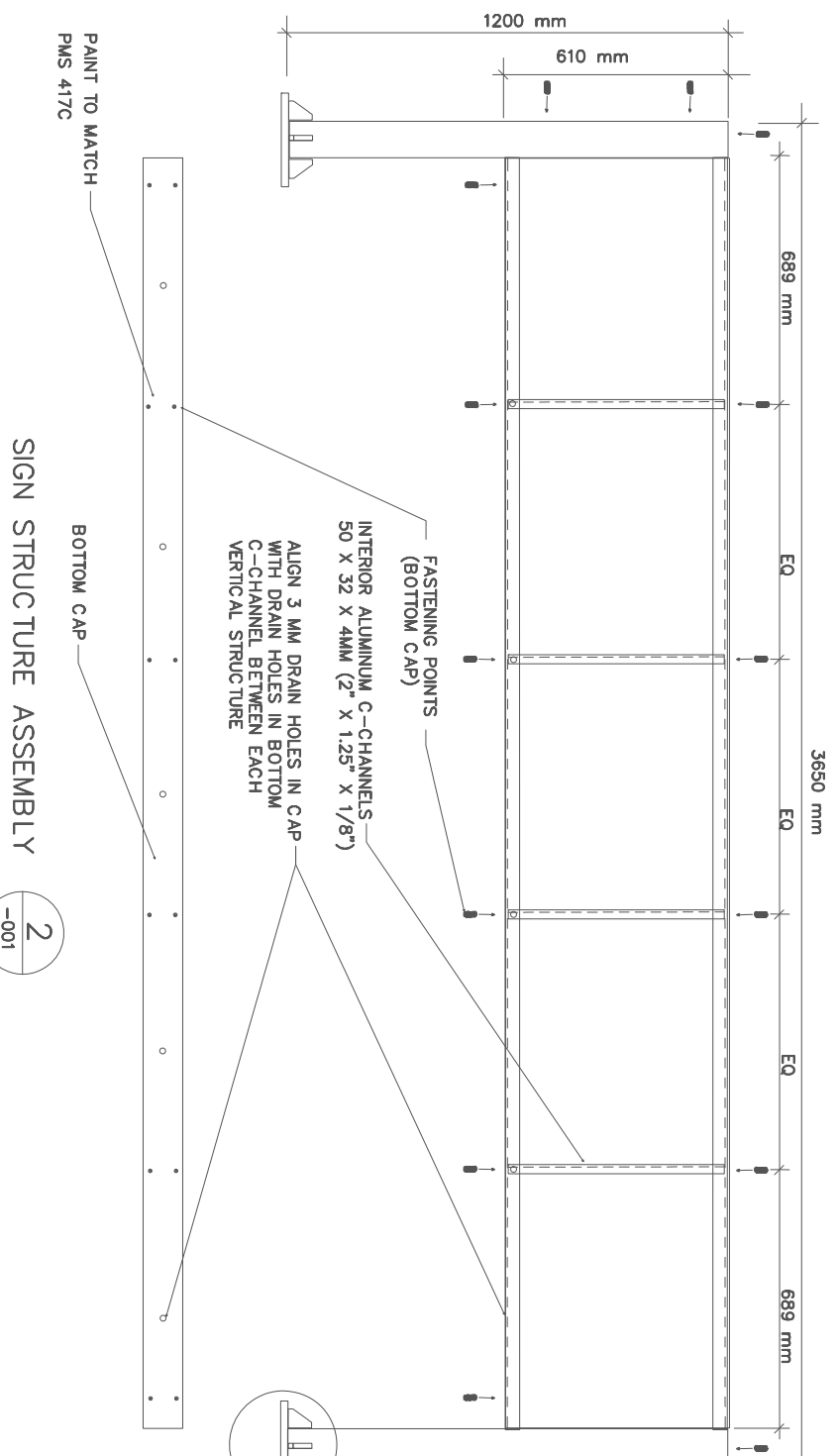
SIGN FACE SLOT IN POST

5  
-001  
SIGN CAP PANEL FASTENING VERTICAL SECTION

SIGN CAP WITH COUNTERSUNK HOLES. SCREW HOLES TO BE DRILLED BEFORE PAINTING.

SIGN FACE

NOTE: THIS DRAWING IS PROVIDED FOR INSTRUCTIONAL DESIGN PURPOSES ONLY BASED ON METROLINX CO TRANSIT DESIGN GUIDELINES AND REQUIREMENTS. THE CONSULTANT SHALL VERIFY FOR LOCAL CODE COMPLIANCE. EXISTING SITE CONDITIONS AND INTER DISCIPLINARY DRAWING COORDINATION. ALL DIMENSIONS AND SPECIFICATIONS SHOULD BE VERIFIED BY CONSULTANT AND/OR



SIGN STRUCTURE ASSEMBLY

2  
-001

REFERENCE DRAWINGS

ISSUE

REVISIONS

DRAWN BY: G.A.D./28  
2015/07/28

DESIGNED BY: G.A.D./28  
2015/07/28

CHECKED BY: G.A.D./28  
2015/07/28

APPROVED BY: G.A.D./12  
2015/08/12

SCALE: 1:XXX

FULL SIZE ONLY

XXXXXXXXX STATION

BLADE-FACILITY ID SIGN (3658 mm) ELEVATIONS

DWG. NO.	TITLE	NO.	DATE	ISSUED FOR	REV.	DATE
XX-20XX-XX-XXX	BLADE-FACILITY ID SIGN (3658 mm) ELEVATIONS	5			5	1/2