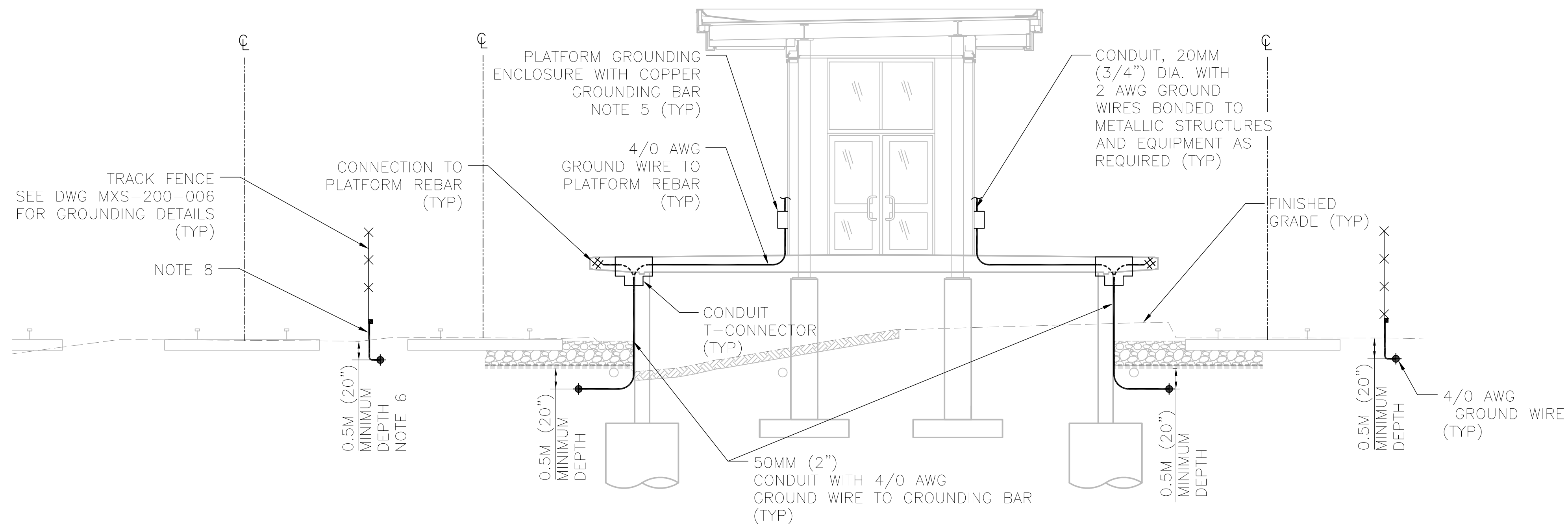
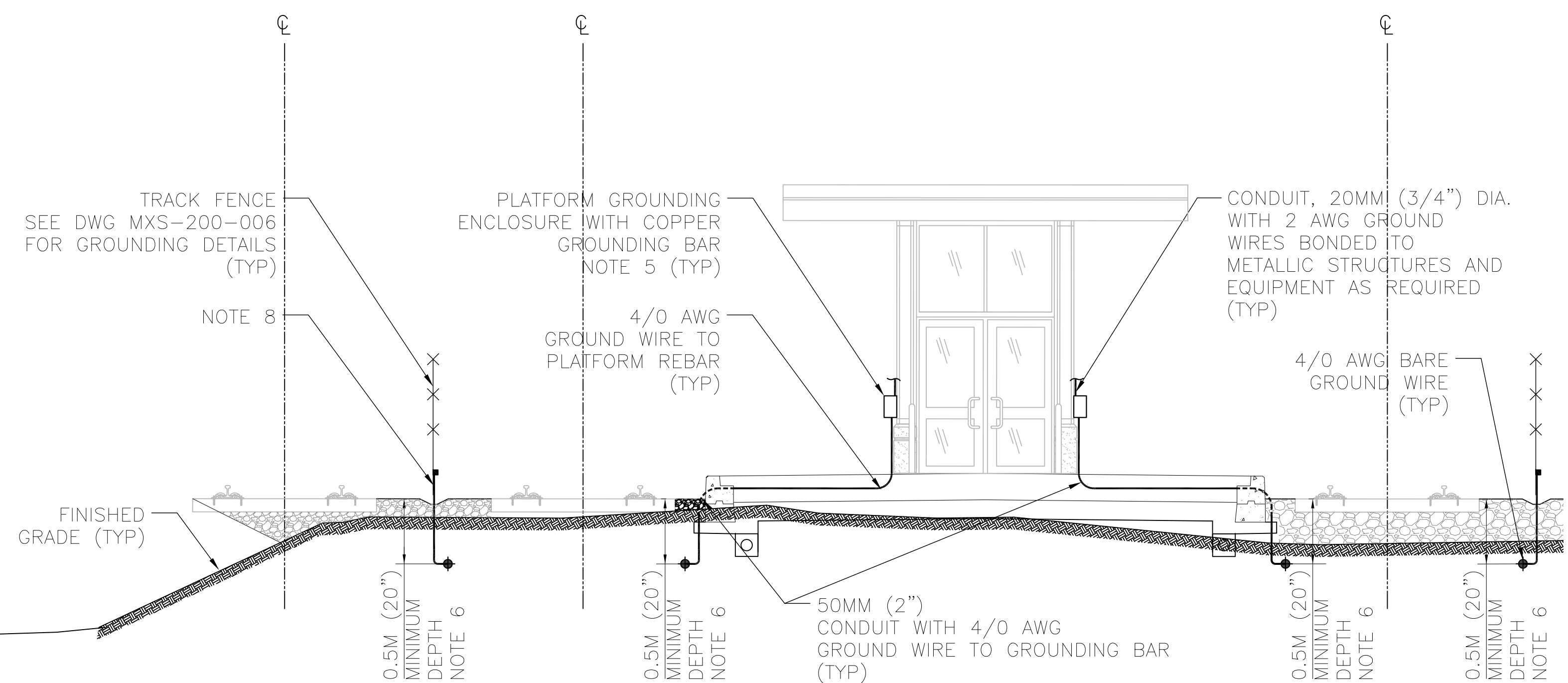


PLOTTED BY: PAULRI PLOTTED DATE: 2015/04/01 PAPER SIZE AT FULL: ANSI D (22.00 x 34.00 INCHES)
 FILE: \\FILE-RGDC01\DEPT\GOIC\07 PROGRAM MANAGEMENT & STANDARDS\PMPS DESIGN STANDARDS\7 REFERENCE MATERIAL\24 ELECTRIFICATION\GROUNDING AND BONDING STANDARD DRAWINGS\MXD-100-002.DWG



DETAIL 1 - ELEVATED PLATFORM SECTION



DETAIL 2 - AT GRADE PLATFORM SECTION

NOTES:

1. ALTERNATIVELY METALLIC STRUCTURES AND EQUIPMENT MAY BE BONDED DIRECTLY TO THE NEAREST GROUND CONDUCTOR.
2. CONNECTION OF GROUND CONDUCTOR TO LONGITUDINAL REBAR SHALL BE AT EVERY STUB-UP (PIGTAIL) LOCATION. COAT THE REBAR EXOTHERMIC WELD CONNECTIONS WITH COAL TAR MASTIC.
3. BOND TRACK FENCE TO GROUND CONDUCTOR AT NO GREATER THAN 4.5M (15') INTERVALS.
4. ALL PLATFORM STRUCTURES MUST BE ELECTRICALLY CONTINUOUS AND BONDED AND CONNECTED TO THE GROUNDING SYSTEM.
5. THE PRESENTED SECTIONS ARE FOR RETRO-FIT OF EXISTING STRUCTURES. FOR NEW CONSTRUCTION ALL GROUNDING AND BONDING EQUIPMENT SHALL BE CAST INTO CONCRETE AND LEFT FLUSH WITH SURFACES WHEREVER PRACTICAL.
6. THE DEPTH OF THE GROUND GRID WILL DEPEND ON LOCAL SITE CONDITIONS AND MUST BE DETERMINED BY THE CONTRACTOR PRIOR TO INSTALLATION. 0.5m IS A TYPICAL VALUE THAT HAS BEEN PROVIDED FOR REFERENCE.
7. PRIOR TO INSTALLATION OF ANY GROUNDING AND BONDING EQUIPMENT, A STUDY MUST BE CONDUCTED TO CONFIRM THE FINAL STEP AND TOUCH POTENTIALS ARE WITHIN ACCEPTABLE LIMITS.
8. FENCES MUST BE CONNECTED TO LONGITUDINAL GROUND CONDUCTORS IN STATION THAT ARE PART OF STATION GROUND GRID NOT CONNECTED TO STANDARD ALONE WIRE.
9. REFER TO DRAWING MXS-200-002 FOR ADDITIONAL GROUND AND BONDING DETAILS FOR STATION FURNITURE AND EQUIPMENT (RAILINGS, DOORS, BENCHES ETC.)
10. FOR ADDITIONAL INFORMATION REFER TO GROUNDING AND BONDING STANDARD INSTALLATION DESIGN DETAILS.
11. ALL METALLIC EQUIPMENT WITHIN 4m OF THE CENTRELINE OF AN ELECTRIFIED TRACK MUST BE CONNECTED TO THE GROUND GRID.

NOTE:
 THIS DRAWING IS PROVIDED FOR INSTRUCTIONAL DESIGN PURPOSES ONLY BASED ON METROLINX GO TRANSIT DESIGN GUIDELINES AND REQUIREMENTS. THE CONSULTANT SHALL VERIFY FOR LOCAL CODE COMPLIANCE, EXISTING SITE CONDITIONS AND INTER DISCIPLINARY DRAWING COORDINATION. ALL DIMENSIONS AND SPECIFICATIONS SHOULD BE VERIFIED BY CONSULTANT AND/OR CONTRACTOR BEFORE ACTUAL CONSTRUCTION BEGINS.

REV.	DATE	ISSUED FOR	REV.	DATE
2	15/04/06	FINAL DESIGN		
1	15/03/06	100% DESIGN		
0	15/02/09	90% DESIGN		

REFERENCE DRAWINGS	ISSUE	REVISIONS

DRAWN BY: RCW 15/01/13	DESIGNED BY: SXF 15/01/13
CHECKED BY: CTG 15/01/16	APPROVED BY: ZBT 15/01/16
SCALE: NTS FULL SIZE ONLY	

**PARSONS
BRINCKERHOFF**

METROLINX

TRACTION ELECTRIFICATION
 GROUNDING AND BONDING
 DIRECTIVE INSTALLATION DESIGN DETAILS
 TYPICAL PLATFORM SECTION

CONTRACT NO. RQQ-2011-PP-032	DWG. NO. MXD-100-002	REV. 0	SHEET 22/26
---------------------------------	-------------------------	-----------	----------------