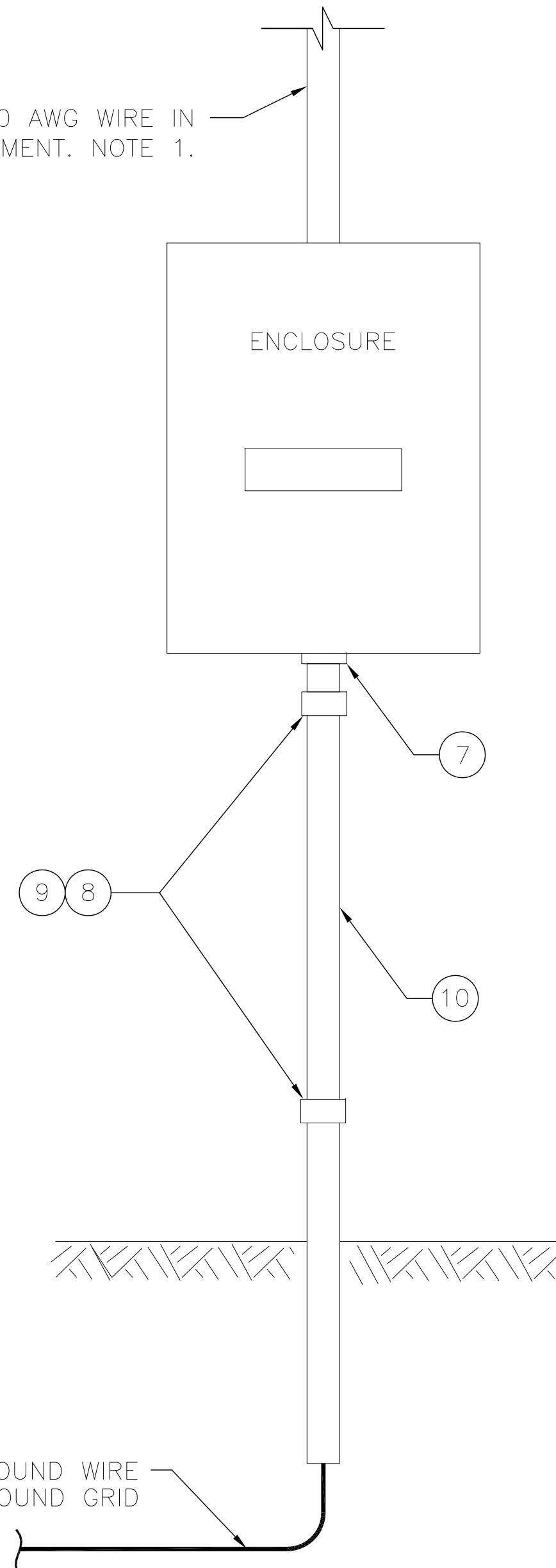
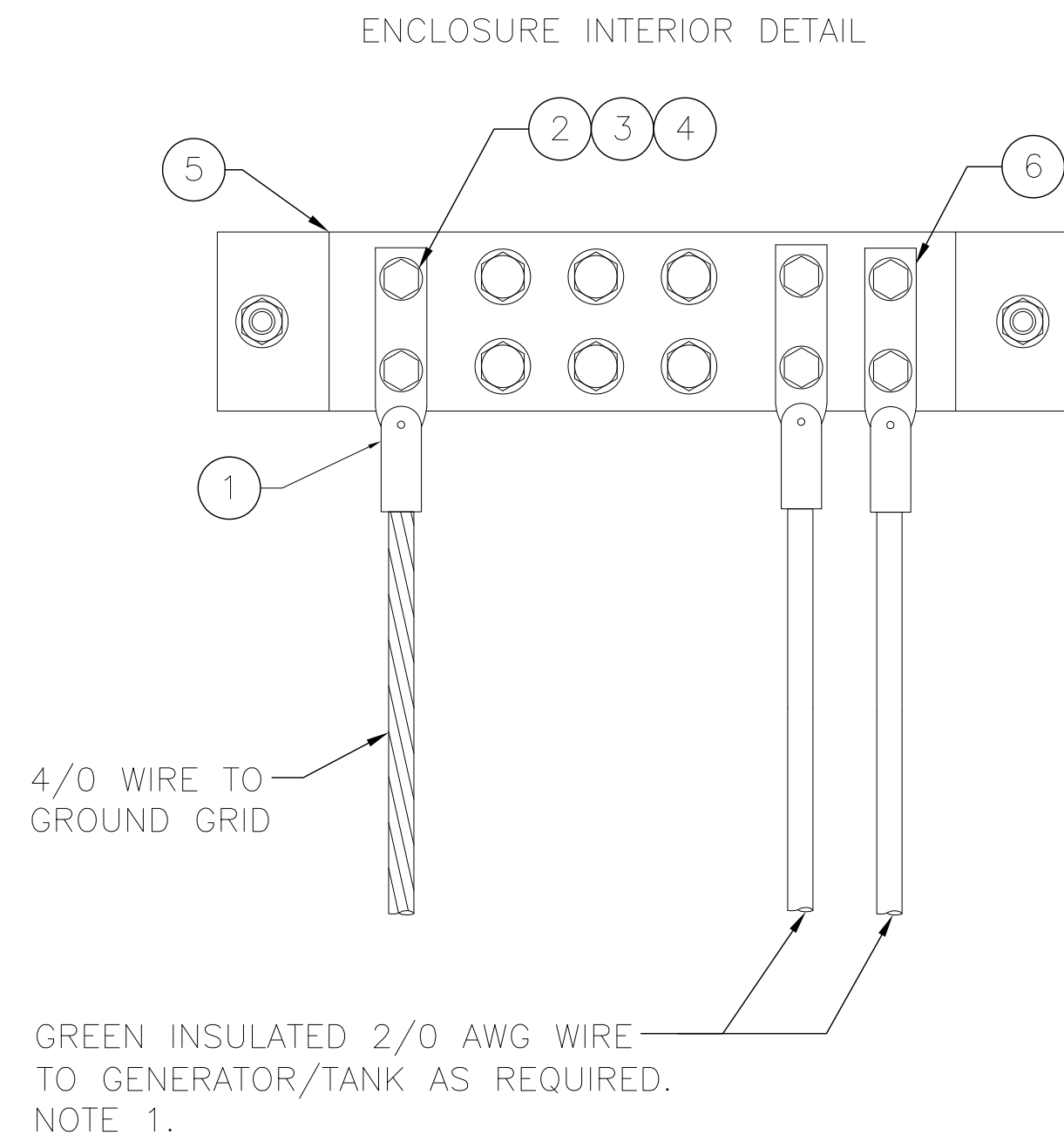


NOTES:

- CONNECT GROUND CONDUCTORS TO EQUIPMENT AS REQUIRED BY THE MANUFACTURERS SPECIFICATION.

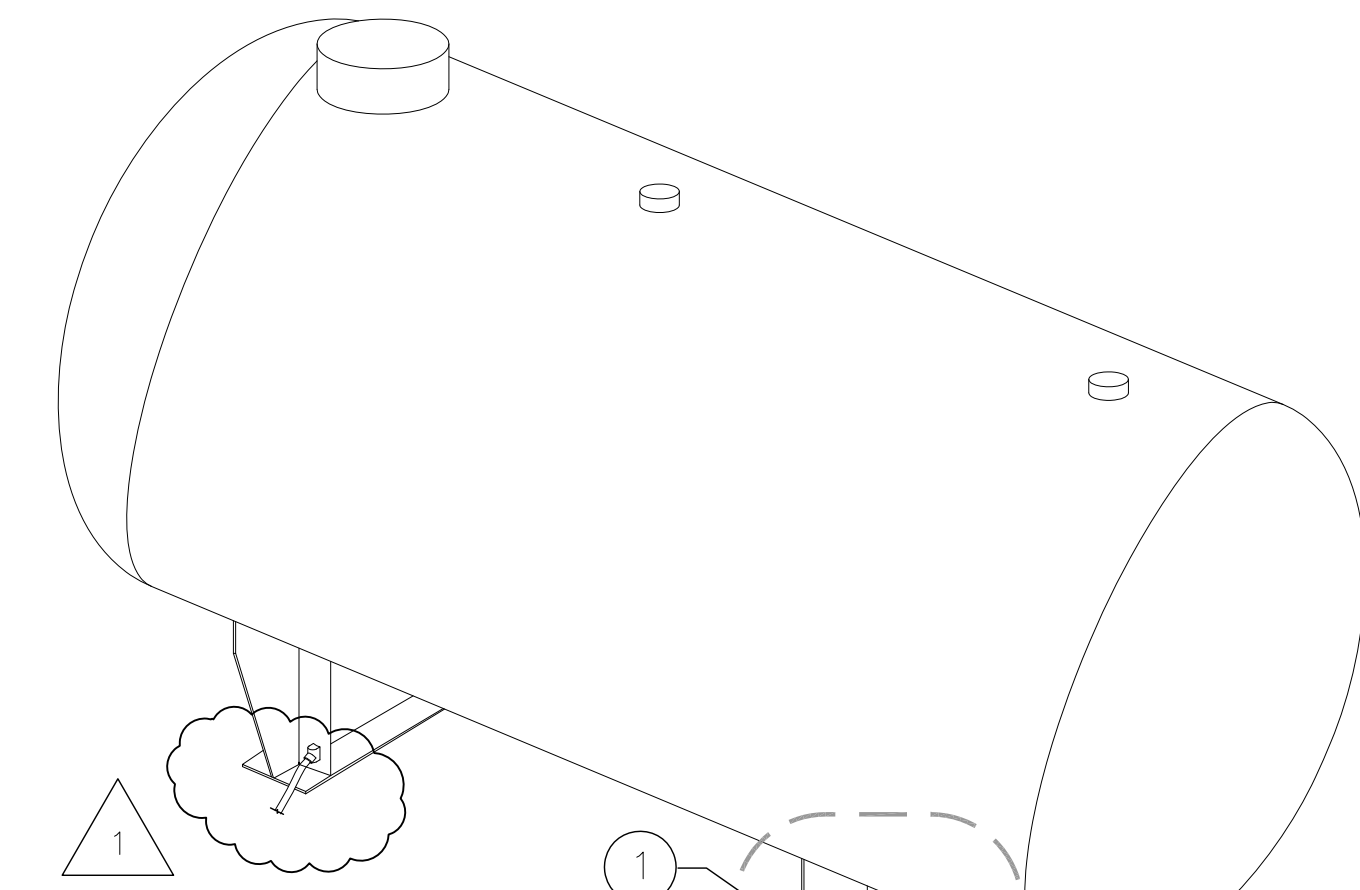
GREEN INSULATED 2/0 AWG WIRE IN CONDUIT TO EQUIPMENT. NOTE 1.



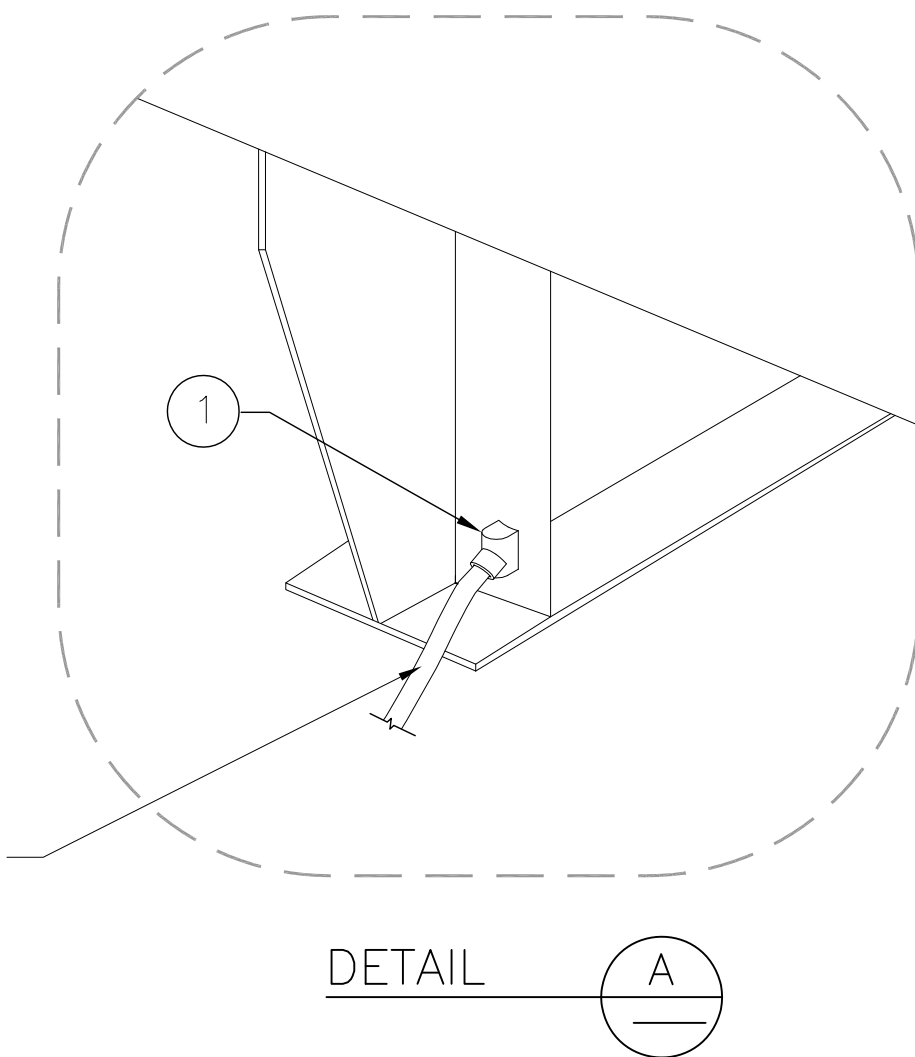
DETAIL 1- GROUND CONNECTION TO GENERATORS AND GENERATOR TANK

ITEM	QTY	UNIT	DESCRIPTION	MANUFACTURER
1	1	EA	COMPRESSION TERMINAL, 2 HOLE, FOR 4/0 WIRE	BURNDY: YGA28-2N OR EQUIVALENT
2	2	EA	DURIUM BOLT 1/2"-13 X 1", W/NUT	BURNDY: 50X100 HEB BOX OR EQUIVALENT
3	4	EA	DURIUM FLAT WASHER 1/2"	BURNDY: 50 FW BOX OR EQUIVALENT
4	4	EA	DURIUM SPRING WASHER 1/2"	BURNDY: 50 SW BOX OR EQUIVALENT
5	1	EA	COPPER GROUND BUS	(GENERIC)
6	PER DESIGN	EA	COMPRESSION TERMINAL, 2 HOLE, FOR 2/0 WIRE AND DURIM BOLT NUT AND WASHERS	BURNDY: YGA26-2N OR EQUIVALENT
7	1	EA	BUSHING	(GENERIC)
8	2	EA	ANCHOR, SS 304, 316	HILTI: KB3 1/4" X 2-1/4" OR EQUIVALENT
9	2	EA	27mm CONDUIT CLAMP 1-HOLE	T&B: 1278 OR EQUIVALENT
10	PER DESIGN	N/A	27mm CONDUIT	(GENERIC)

ITEM	QTY	UNIT	DESCRIPTION	MANUFACTURER
1	2	EA	VERTICAL WIRE TO VERTICAL STEEL SURFACE EXOTHERMIC CONNECTION	BURNDY: B-2741 OR EQUIVALENT



DETAIL A



PIGTAIL CONNECTION TO GROUND GRID

DETAIL A

DETAIL 2 - GROUND CONNECTION TO VESSELS OR STORAGE TANK GROUNDING

NOTE: THIS DRAWING IS PROVIDED FOR INSTRUCTIONAL DESIGN PURPOSES ONLY BASED ON METROLINX GO TRANSIT DESIGN GUIDELINES AND REQUIREMENTS. THE CONSULTANT SHALL VERIFY FOR LOCAL CODE COMPLIANCE, EXISTING SITE CONDITIONS AND INTER DISCIPLINARY DRAWING COORDINATION. ALL DIMENSIONS AND SPECIFICATIONS SHOULD BE VERIFIED BY CONSULTANT AND/OR CONTRACTOR BEFORE ACTUAL CONSTRUCTION BEGINS.

PLOTTED BY: PAULRI PLOTTED DATE: 2015/04/01 PAPER SIZE AT FULL: ANSI D (22.00 X 34.00 INCHES) FILE: \\FILE-RGDC01\DEPT\GOIC017 PROGRAM MANAGEMENT & STANDARD\SPMPS DESIGN STANDARDS\200-010 REV 1.DWG

REFERENCE DRAWINGS		ISSUE		REVISIONS	
DWG NO.	TITLE	NO.	DATE	ISSUED FOR	REV. DATE
		2	15/04/06	FINAL DESIGN	
		1	15/02/09	90% DESIGN	
		0	15/01/16	60% DESIGN	1 15/04/15
					ADDED A SECOND GROUNDING TO THE VESSEL

DRAWN BY: RCW 14/12/11	DESIGNED BY: SXF 14/12/11
CHECKED BY: CTG 15/01/16	APPROVED BY: ZBT 15/01/16
SCALE: NTS FULL SIZE ONLY	



TRACTION ELECTRIFICATION
GROUNDING AND BONDING
STANDARD INSTALLATION DESIGN DETAILS
ELECTRICAL AND MECHANICAL EQUIPMENT

CONTRACT NO. RQQ-2011-PP-032	DWG. NO. MXS-200-010	REV. 1	SHEET 18/26
---------------------------------	-------------------------	-----------	----------------