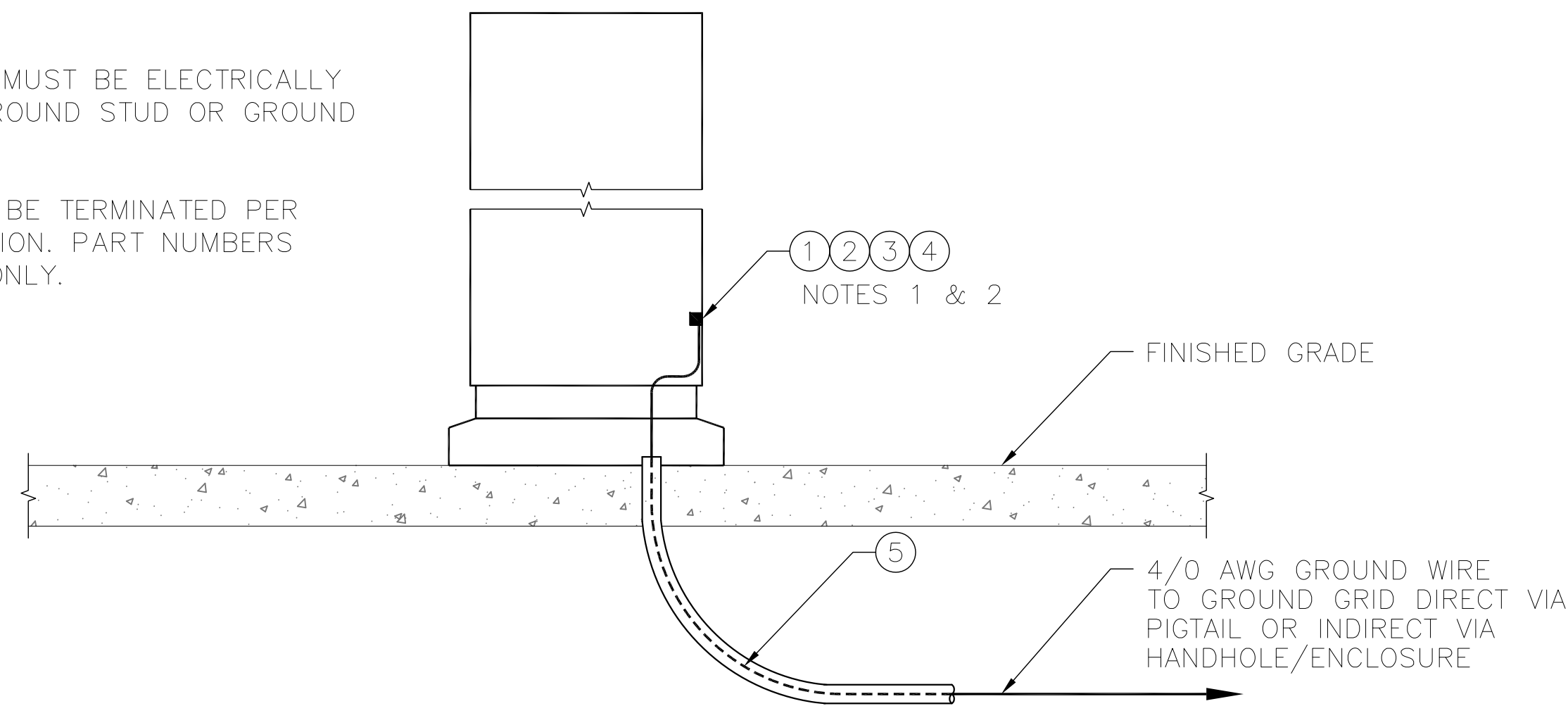


NOTES:

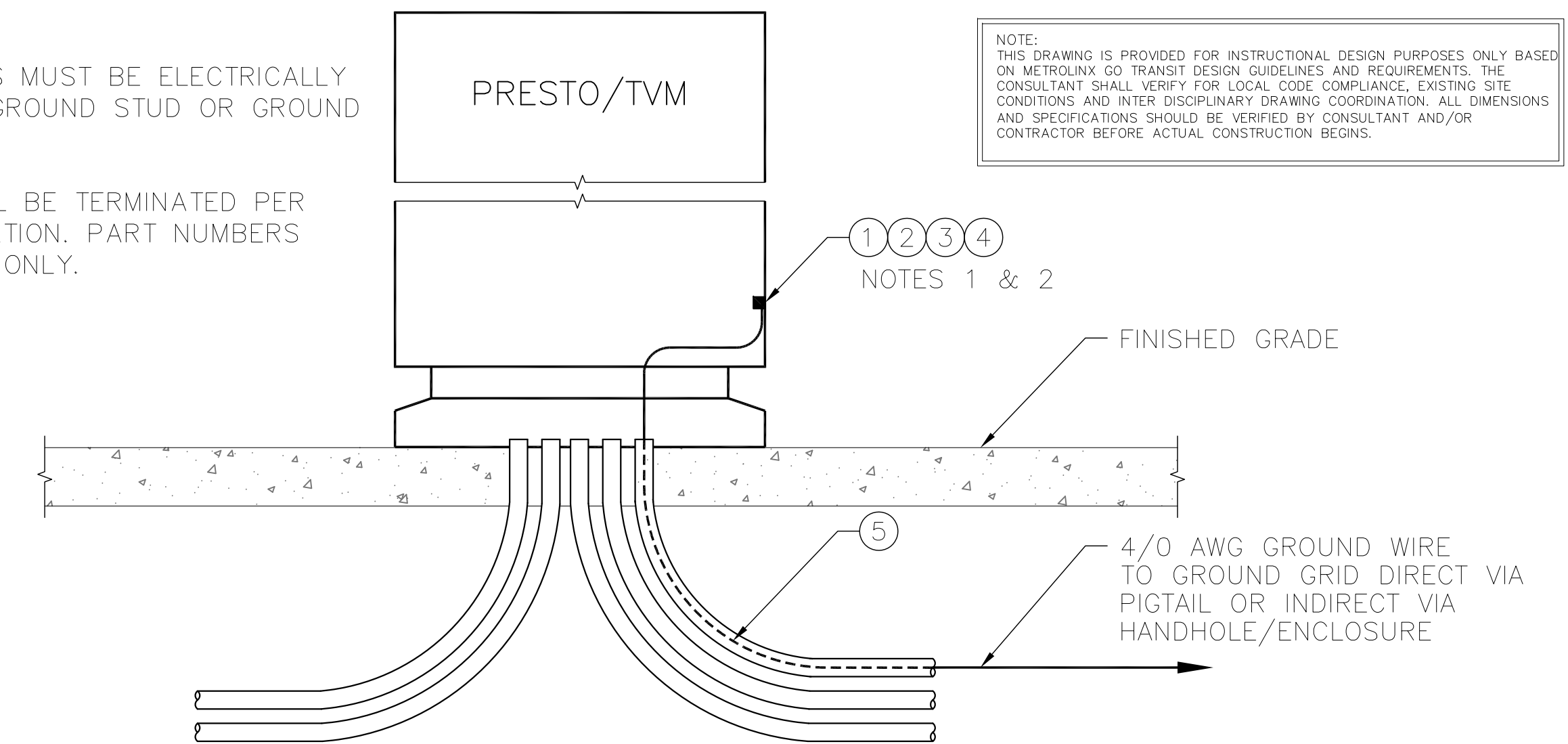
1. ALL METALLIC COMPONENTS MUST BE ELECTRICALLY CONNECTED TO INTERNAL GROUND STUD OR GROUND BAR BY MANUFACTURER.
2. GROUND CONDUCTOR SHALL BE TERMINATED PER MANUFACTURERS SPECIFICATION. PART NUMBERS PROVIDED FOR REFERENCE ONLY.



DETAIL 1 – GROUNDING CONNECTION TO METALLIC ENCLOSURE (GARBAGE BIN, NEWSPAPER BOX ETC.)

NOTES:

1. ALL METALLIC COMPONENTS MUST BE ELECTRICALLY CONNECTED TO INTERNAL GROUND STUD OR GROUND BAR BY MANUFACTURER.
2. GROUND CONDUCTOR SHALL BE TERMINATED PER MANUFACTURERS SPECIFICATION. PART NUMBERS PROVIDED FOR REFERENCE ONLY.



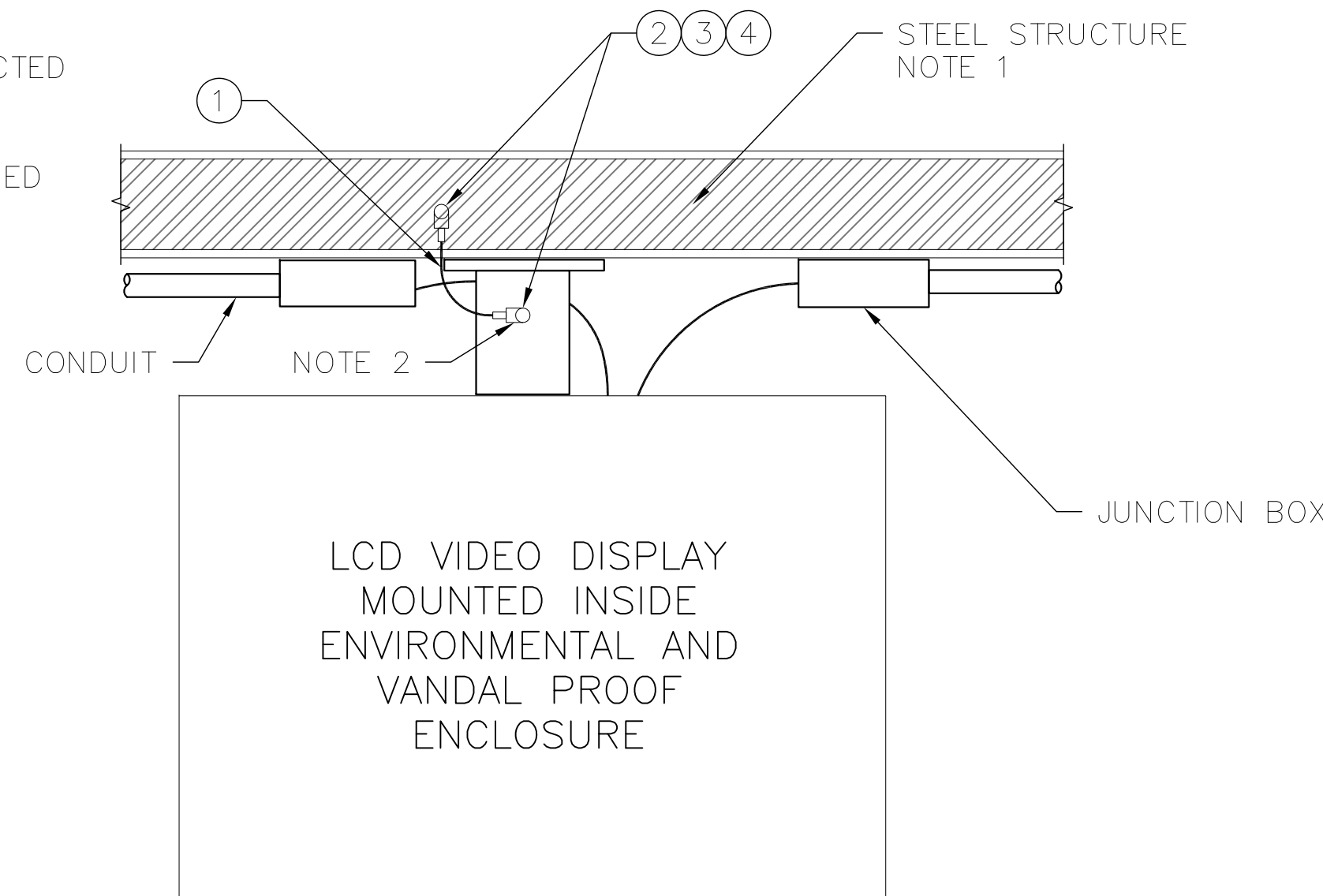
DETAIL 2 – GROUNDING CONNECTION TO PRESTO AND TICKET VENDING MACHINES

ITEM	QTY	UNIT	MATERIAL DESCRIPTION	MANUFACTURER & CAT. NO.
1	1	EA	BOLT, HEX, SS, 1/2"-13 NC x 1", A304/A316)	(GENERIC)
2	1	EA	WASHER, SPRING (LOCK), STAINLESS, 1/2", A304/A316	
3	2	EA	WASHER, FLAT, SS, 1/2", A304/A316	
4	1	EA	TERMINAL 1 HOLE FOR 4/0 WIRE	BURNDY: YA28L-BOX OR EQUIVALENT
5	PER DESIGN	FEET	27 mm CONDUIT	GENERIC

ITEM	QTY	UNIT	MATERIAL DESCRIPTION	MANUFACTURER & CAT. NO.
1	1	EA	BOLT, HEX, SS, 1/2"-13 NC x 1", A304/A316)	(GENERIC)
2	1	EA	WASHER, SPRING (LOCK), STAINLESS, 1/2", A304/A316	
3	2	EA	WASHER, FLAT, SS, 1/2", A304/A316	
4	1	EA	TERMINAL 1 HOLE FOR 4/0 WIRE	BURNDY: YA28L-BOX OR EQUIVALENT
5	PER DESIGN	FEET	27 mm CONDUIT	GENERIC

NOTES:

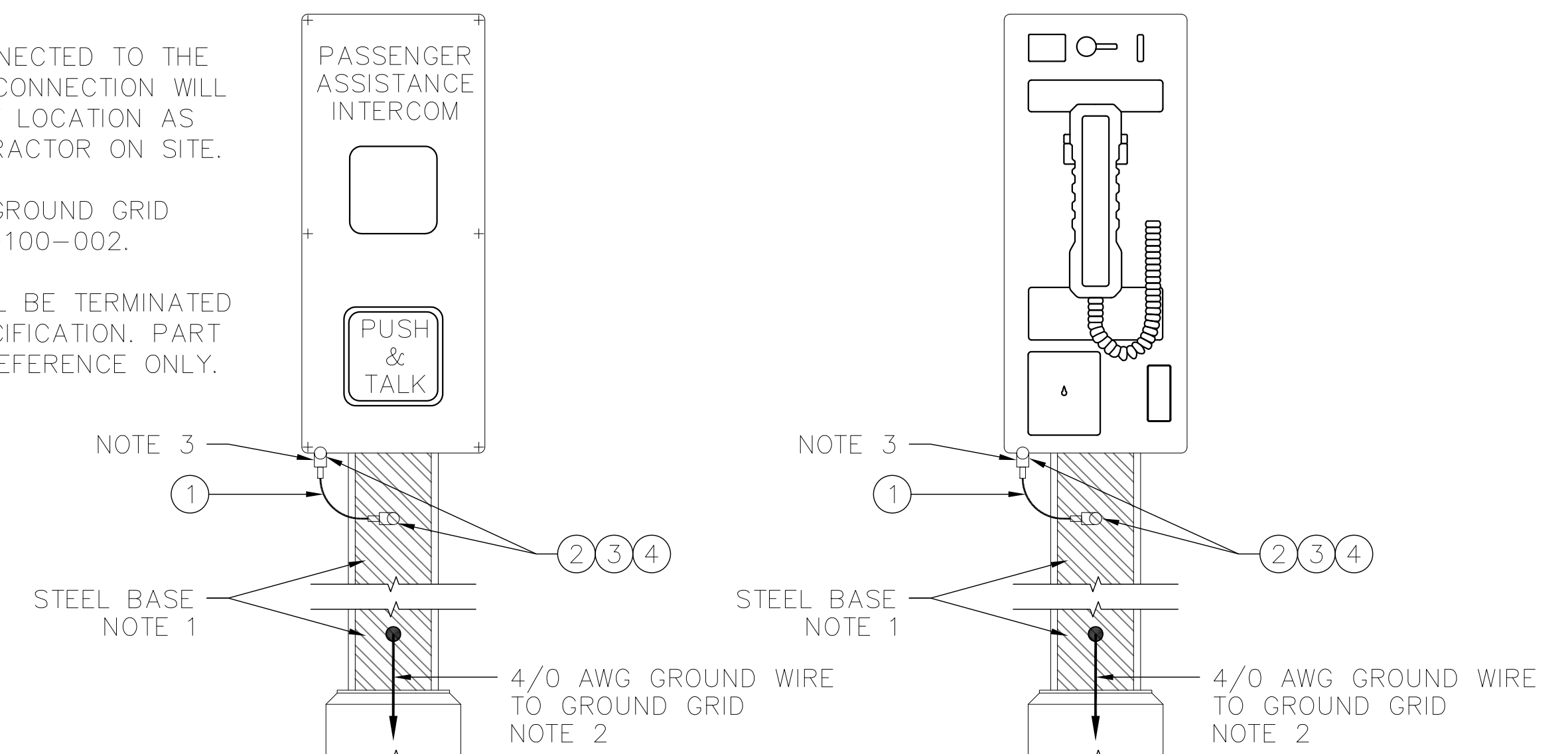
1. STEEL STRUCTURE MUST BE CONNECTED TO THE GROUNDING SYSTEM. THIS CONNECTION WILL BE MADE IN A CONVENIENT LOCATION AS DETERMINED BY THE CONTRACTOR ON SITE.
2. GROUND CONDUCTOR SHALL BE TERMINATED PER MANUFACTURERS SPECIFICATION. PART NUMBERS PROVIDED FOR REFERENCE ONLY.



DETAIL 3 – GROUNDING CONNECTION TO PASSENGER INFORMATION DYNAMIC DISPLAY

NOTES:

1. STEEL BASE MUST BE CONNECTED TO THE GROUNDING SYSTEM. THIS CONNECTION WILL BE MADE IN A CONVENIENT LOCATION AS DETERMINED BY THE CONTRACTOR ON SITE.
2. THE CONNECTION TO THE GROUND GRID SHALL BE MADE PER MXS-100-002.
3. GROUND CONDUCTOR SHALL BE TERMINATED PER MANUFACTURERS SPECIFICATION. PART NUMBERS PROVIDED FOR REFERENCE ONLY.



DETAIL 4 – GROUNDING CONNECTION TO TELEPHONE (BELL) PEDESTALS

ITEM	QTY	UNIT	MATERIAL DESCRIPTION	MANUFACTURER & CAT. NO.
1	1	EA	FLEXIBLE COPPER BRAID	BURNDY: BD12 OR EQUIVALENT
2	2	EA	BOLT, HEX, SS, 3/8"-16 x 1", A304/A316 W/NUT	(GENERIC)
3	2	EA	WASHER, SPRING (LOCK), STAINLESS, 3/8, A304/A316	
4	2	EA	WASHER, FLAT, SS, 3/8", A304/A316	

ITEM	QTY	UNIT	MATERIAL DESCRIPTION	MANUFACTURER & CAT. NO.
1	1	EA	FLEXIBLE COPPER BRAID	BURNDY: BD12 OR EQUIVALENT
2	2	EA	BOLT, HEX, SS, 3/8"-16 x 1", A304/A316 W/NUT	(GENERIC)
3	2	EA	WASHER, SPRING (LOCK), STAINLESS, 3/8, A304/A316	
4	2	EA	WASHER, FLAT, SS, 3/8", A304/A316	

PLOTTED BY: PAULRI PLOTTED DATE: 2015/04/01 PAPER SIZE AT FULL: ANSI D (22.00 x 34.00 INCHES) FILE: \\FILE-RGDC01\DEPT\GOIC\07 PROGRAM MANAGEMENT & STANDARDS\PMPS DESIGN STANDARDS\TRACIEN\GNDING AND BONDING STANDARD DRAWINGS\MXS-200-011.DWG

REFERENCE DRAWINGS		ISSUE		REVISIONS	
DWG NO.	TITLE	REV.	DATE	ISSUED FOR	REV. DATE
		3	15/04/06	FINAL DESIGN	
		2	15/03/06	100% DESIGN	
		1	15/02/09	90% DESIGN	
		0	15/01/16	60% DESIGN	

DRAWN BY: SB 15/01/13	DESIGNED BY: SXF 15/01/13
CHECKED BY: CTG 15/01/16	APPROVED BY: ZBT 15/01/16
SCALE: NTS FULL SIZE ONLY	

**PARSONS
BRINCKERHOFF**

METROLINX

**TRACTION ELECTRIFICATION
GROUNDING AND BONDING
STANDARD INSTALLATION DESIGN DETAILS
ELECTRONIC EQUIPMENT ACCESSIBLE TO THE PUBLIC**

CONTRACT NO. RQ-2011-PP-032	DWG. NO. MXS-200-011	REV. 0	SHEET 19/26
--------------------------------	-------------------------	-----------	----------------