

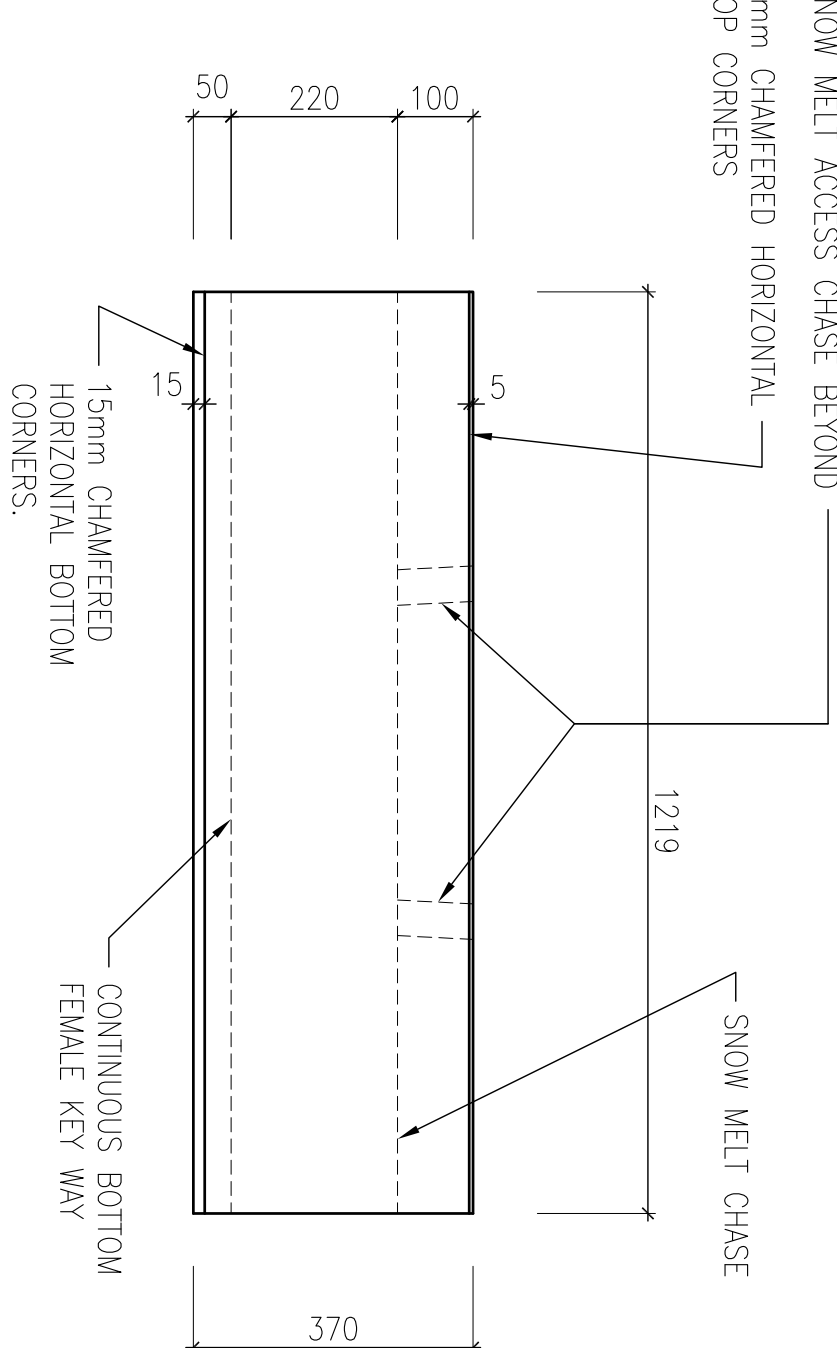
## CONCRETE SPECIFICATIONS

- (a) concrete to remain serviceable when exposed to:
  - (i) freeze-thaw cycles
  - (ii) de-icing chemicals
  - (iii) contact with soil composed of  $\text{SO}_4 > 2\%$
  - (iv) soil retention forces and pedestrian and service vehicular traffic pattern loading
- (b) Concrete to be highly durable.
- (c) Concrete to be ultra-low in permeability.

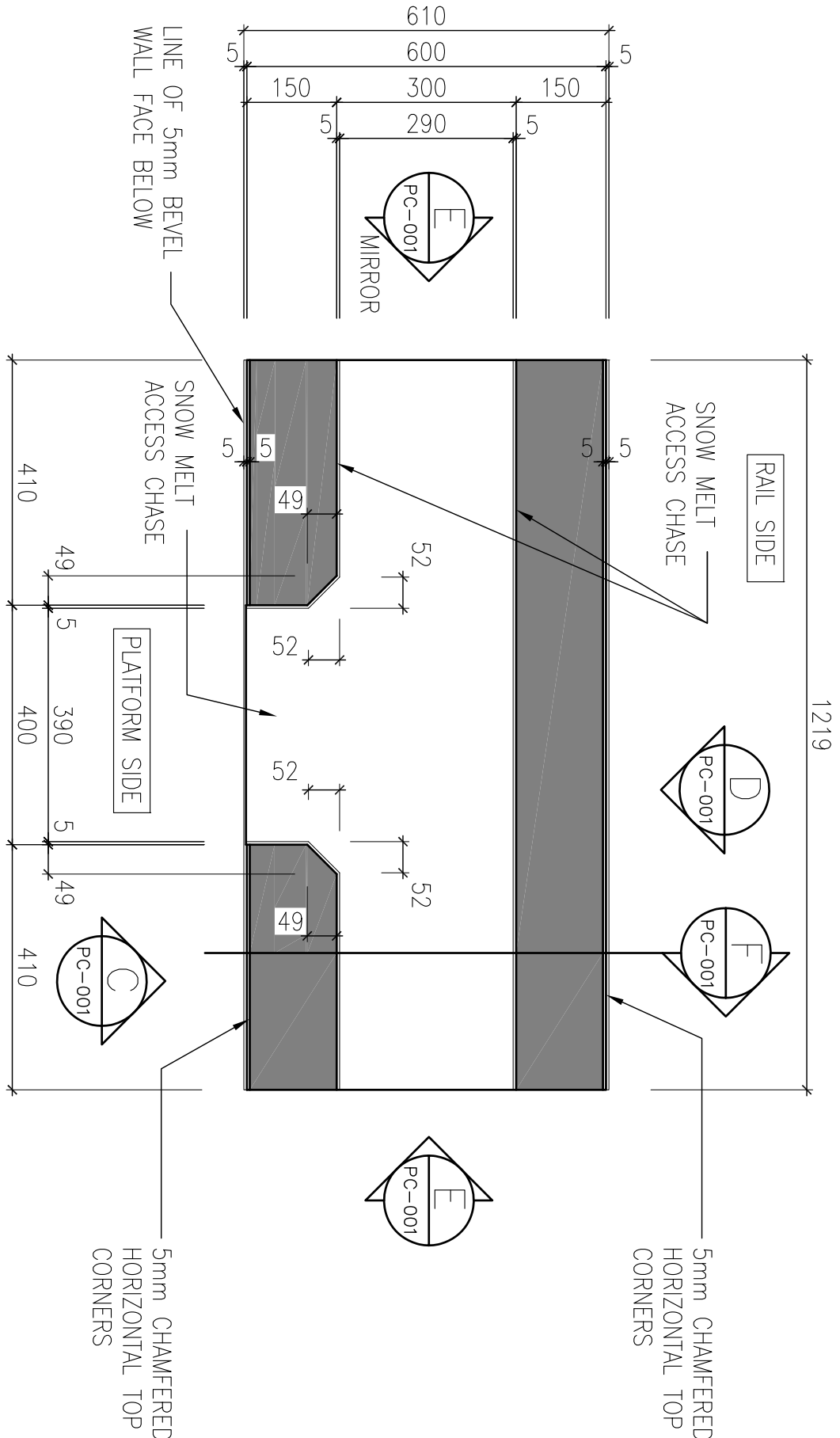
### 3. TECHNICAL REQUIREMENTS

- (v) Minimum compressive strength of 35 MPa at 28 days.
- (vi) Concrete quality and proportioning to CSA A23.1/A23.2-09 or latest version, and the following requirements:
  - (i) Cement to be "Portland Cement" to CSA Standard CAN-3-A5-M77 or latest version. Concrete to contain a minimum cement content of 365 kg per cubic metre of concrete.
  - (ii) Supplementary cementing material to be silica fume. Maximum silica fume content to be 10% of the total cement volume by weight.
  - (iii) Maximum aggregate size to be 20mm.
  - (iv) Ratio of water to cementing materials not to exceed 0.40.
  - (v) Concrete to contain an approved non-retarding agent to CSA A23.1/A23.2-09 or latest version, both of which to be added in accordance with Manufacturer's recommendations.
  - (vi) Air content range to be between 5% and 8%.
  - (vii) Slump at point of discharge to be 75mm  $\pm$  25mm.
  - (viii) Concrete to include a crystalline water proofing admixture at a rate of 2% to 3% of the total cementitious content in accordance with the Manufacturer's recommendations. Use Admix C-1000 by Xypex, Krystol Internal Membrane (KIM) by Krylon, or approved alternate.
- (ix) The use of Chlorides in admixtures is Not Permitted.

NOTE: THIS DRAWING IS PROVIDED FOR INSTRUCTIONAL DESIGN PURPOSES ONLY BASED ON METROLOGIC'S TRANSLIT DESIGN GUIDELINES AND REQUIREMENTS. THE CONSULTANT SHALL VERIFY FOR LOCAL CODE COMPLIANCE. EXISTING SITE CONDITIONS AND INTER DISCIPLINARY DRAWING COORDINATION, ALL DIMENSIONS AND SPECIFICATIONS SHOULD BE VERIFIED BY CONSULTANT AND/OR CONTRACTOR BEFORE ACTUAL CONSTRUCTION BEGINS.

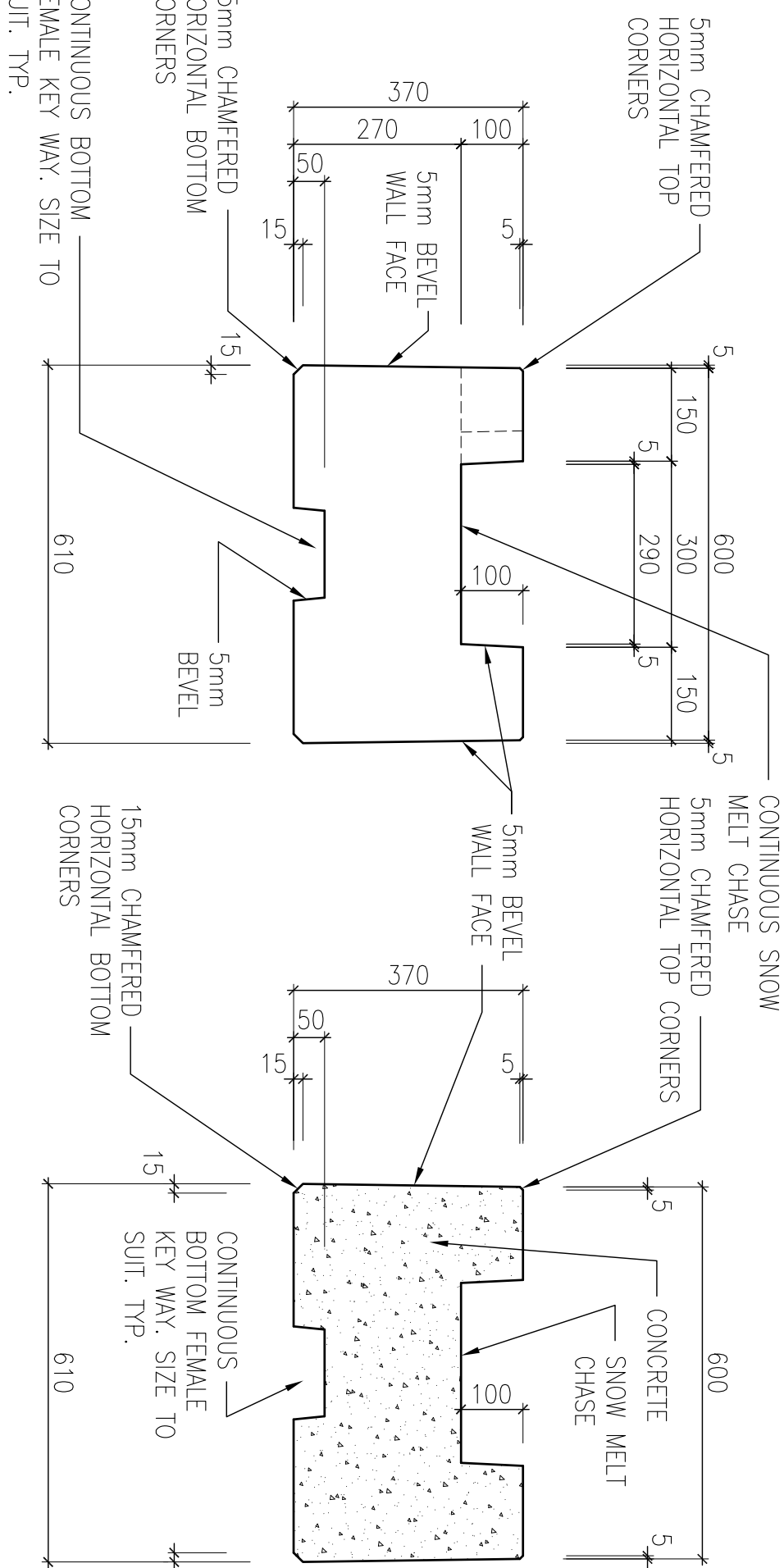


RAIL SIDE ELEVATION (CAP)



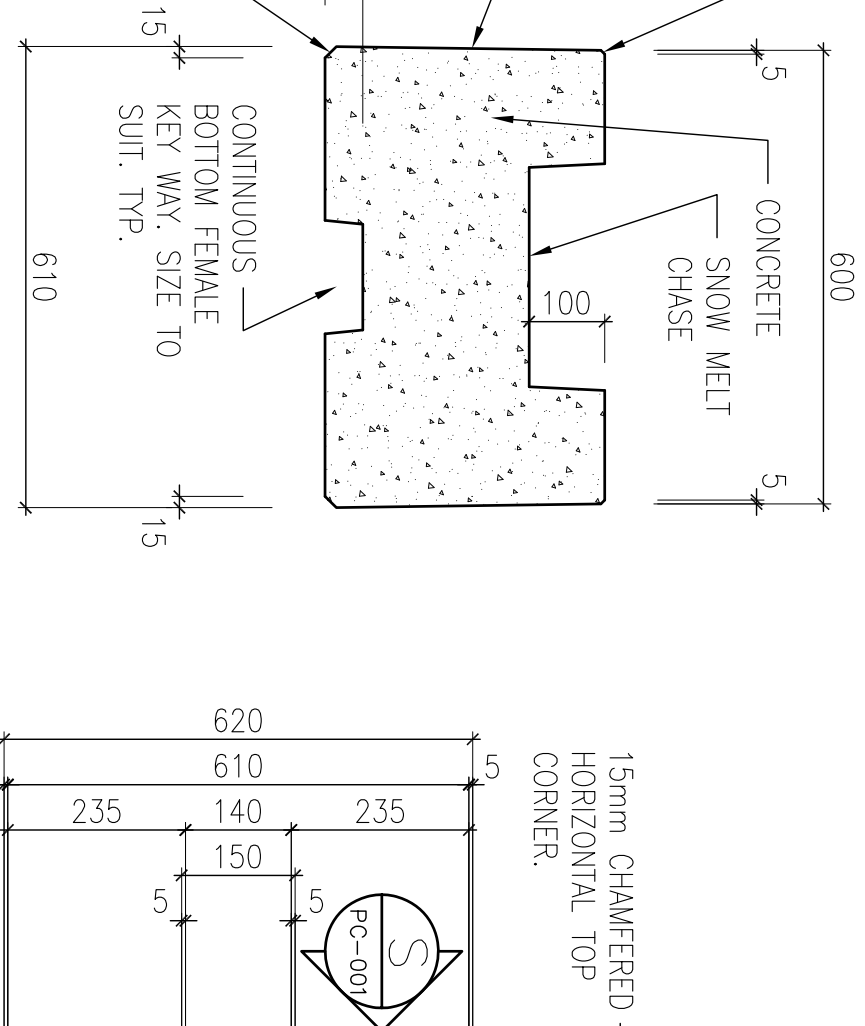
PLAN TOP VIEW (CAP) A

SCALE 1:10 PC-001

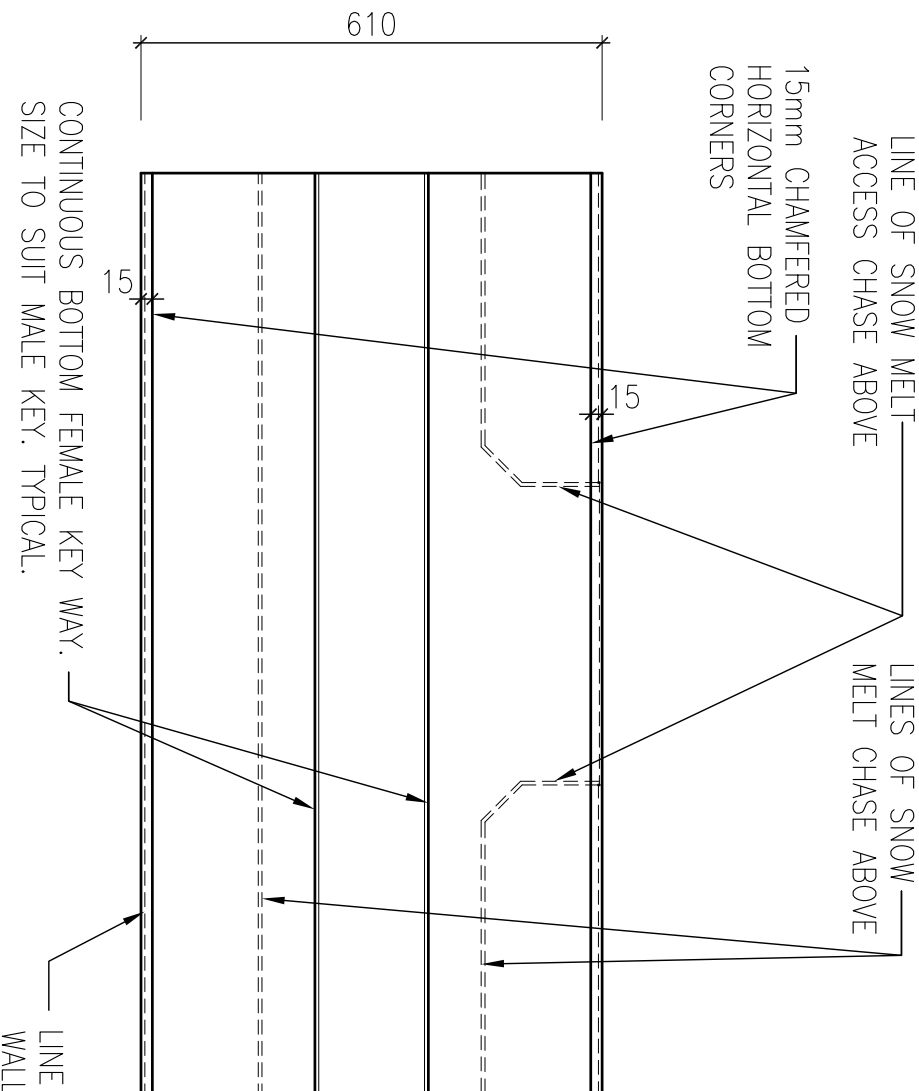


END ELEVATION (CAP) E

SCALE 1:10 PC-001



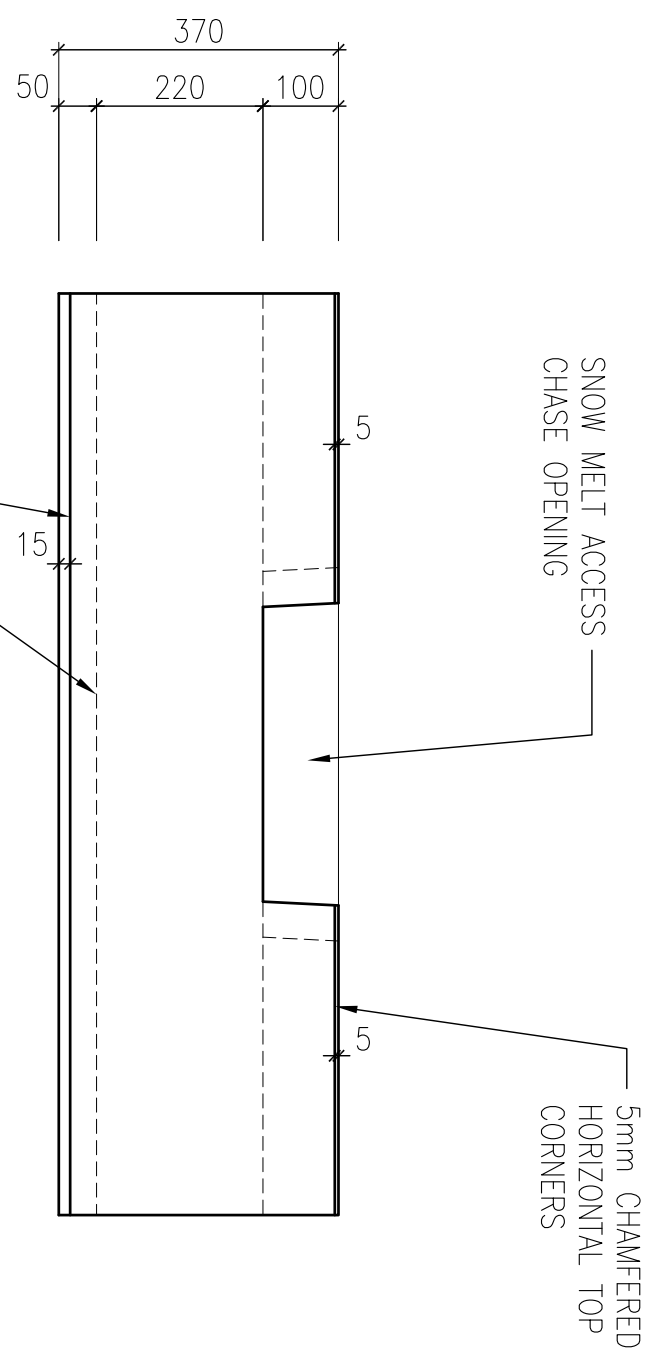
SECTION (CAP) F  
SCALE 1:10 PC-001



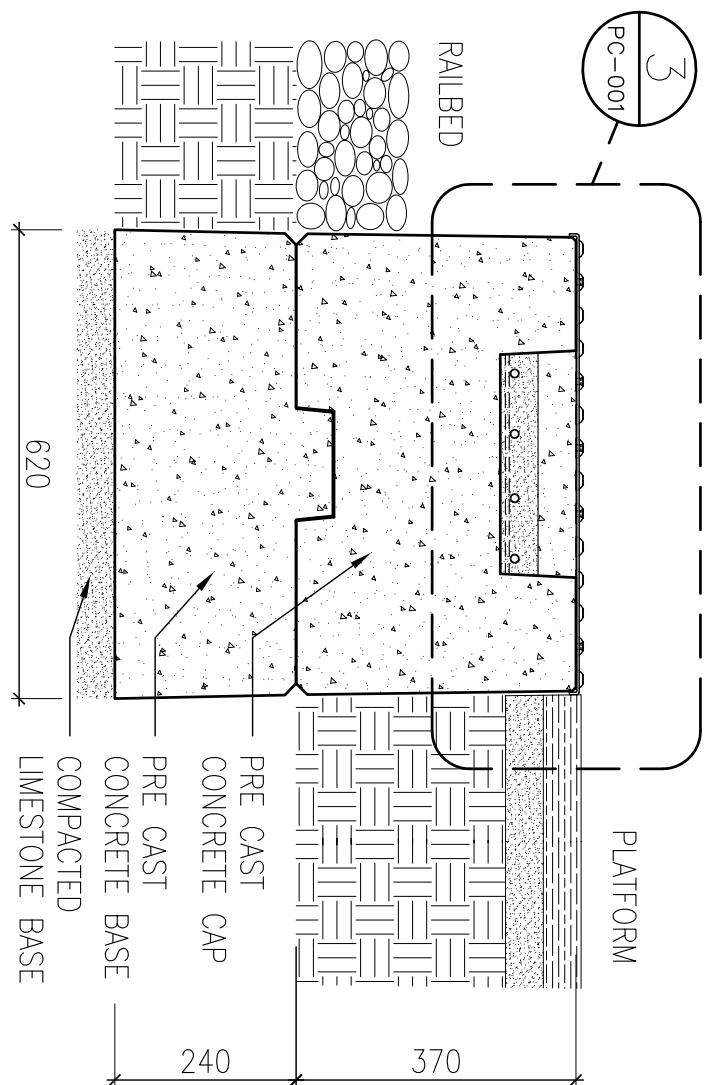
PLAN BOTTOM VIEW (CAP) 

---

SCALE 1:10 



PLATFORM SIDE ELEVATION (CAP)



ASSEMBLED PLATFORM SECTION 2

SCALE 1:10

PC-001

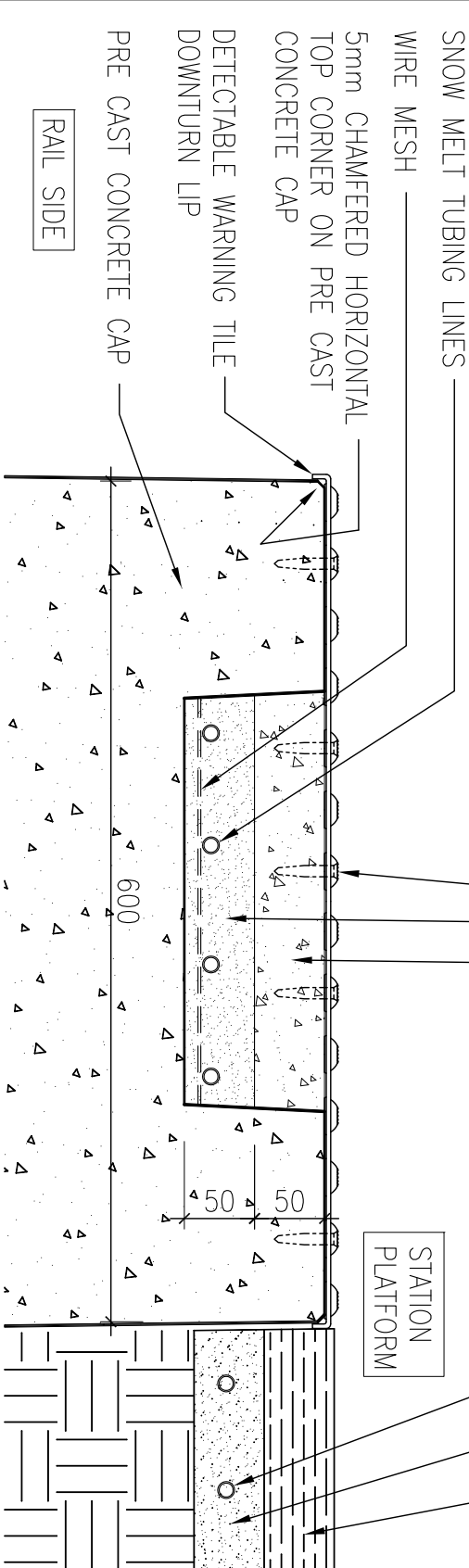
**NOTE: INSTALLATION DETAILS FOR REFERENCE PURPOSES**

METRIC

NOTE: DETECTABLE TILE DESIGN AND INSTALLATION TO MEET REQUIREMENTS OF OBC AND ACCESSIBILITY FOR ONTARIANS WITH DISABILITIES ACT (AODA). LATEST VERSION.

ALL DIMENSIONS SHOWN ARE  
IN METRES AND/OR MILLIMETRES  
UNLESS OTHERWISE NOTED.

610mm YELLOW DETECTABLE WARNING TILE. SECURED TO PRE-CAST CONCRETE CAP & POURED IN PLACE CONCRETE TOPPING. AS PER MANUFACTURERS INSTALLATION INSTRUCTIONS.



SECTION DETAIL 3  
SCALE 1:5  
PC-001

NOTE: INSTALLATION DETAILS FOR REFERENCE PURPOSES

REFERENCE DRAWINGS		ISSUE		REVISIONS		DRAWN BY:	DESIGNED BY:
						CHECKED BY:	APPROVED BY:
	TITLE	REV.	DATE	ISSUED FOR	REV.	DATE	
DWG NO.							

SCALE: 1:10      FULL SIZE ONLY  
 0 100 200 300 400mm  
1:10

A Division of METROLINK

PRECAST CONCRETE PLATFORM CURBS  
TYPICAL CAP AND BASE CURBS  
PLANS, ELEVATIONS & SECTIONS

CONTRACT NO.

DWG. NO.  
PC-001

REV.

SHEET