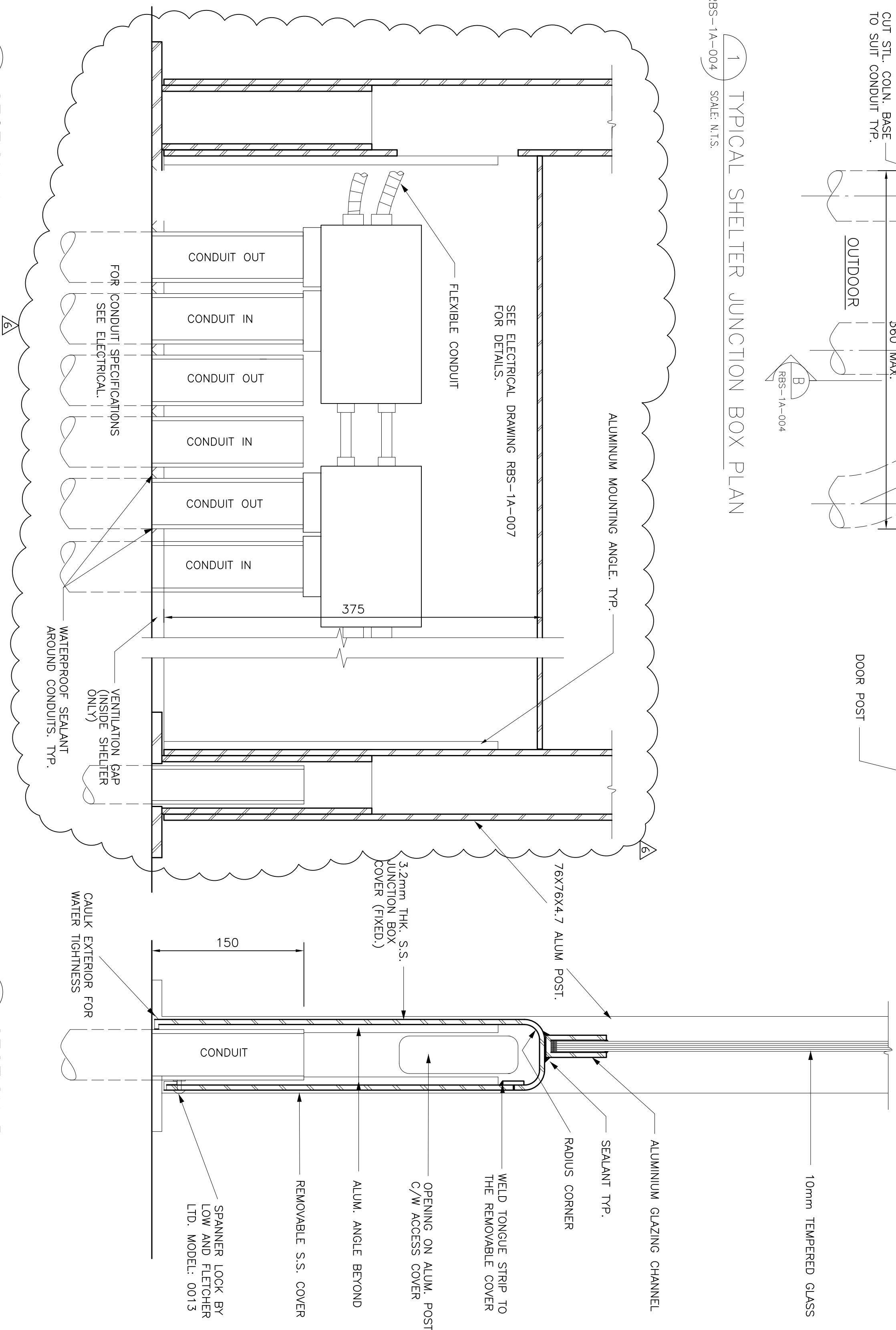


NOTE:

1. REMOVABLE STAINLESS STEEL COVER TO BE EMBOSSED OR ENGRAVED "POWER WIRING" OR "LOW VOLTAGE WIRING"

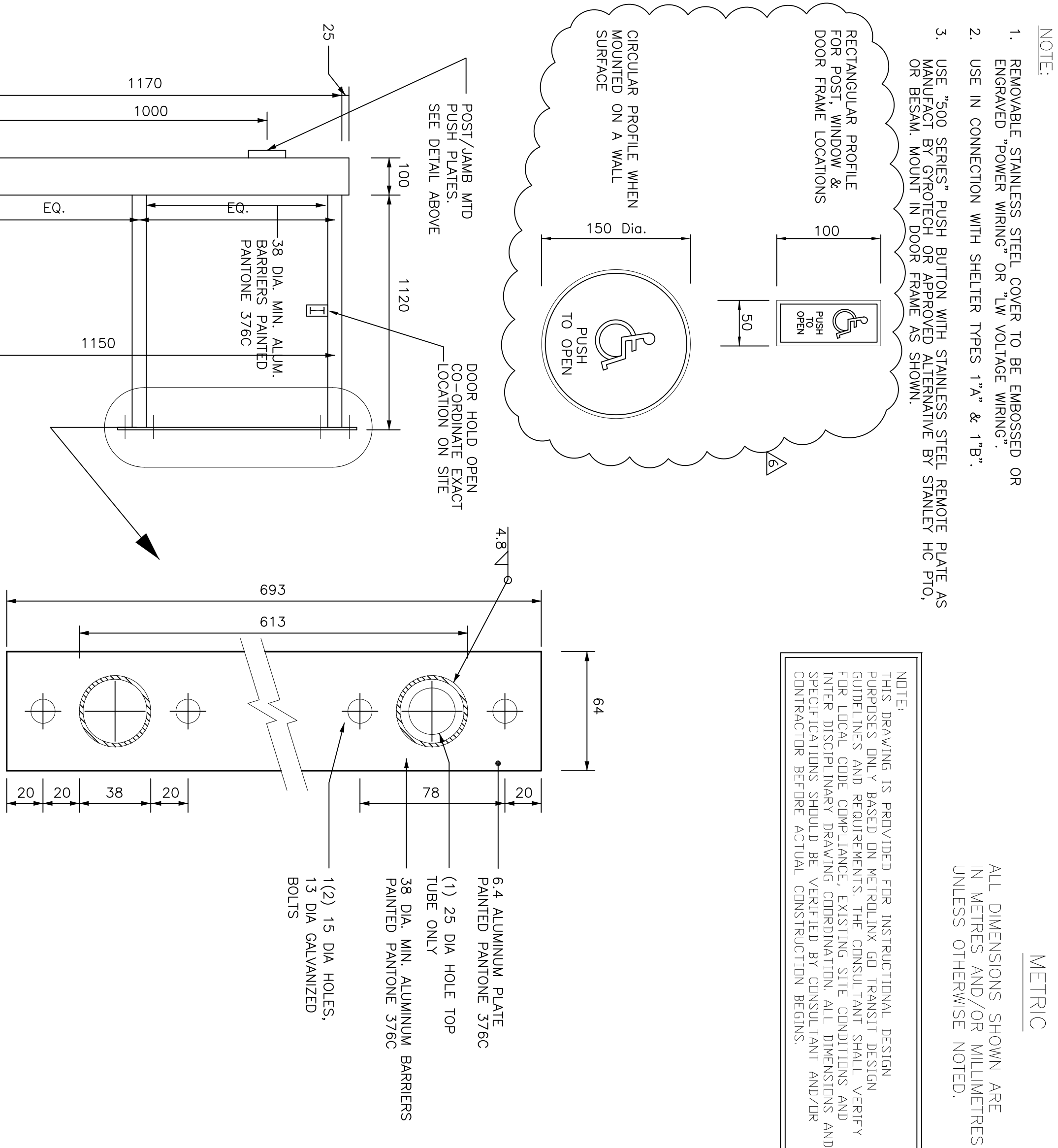


## SECTION A

RBS-1A-004 SCALE: N.T.S

### SECTION B


SCALE: N.T.S.



NOTE: THIS DRAWING IS PROVIDED FOR INSTRUCTIONAL DESIGN PURPOSES ONLY. BASED ON METHOD, LOG, RANSIT DESIGN GUIDELINES AND REQUIREMENTS, THE CONSULTANT SHALL VERIFY FOR LOCAL CODE COMPLIANCE, EXISTING SITE CONDITIONS AND INTER DISCIPLINARY DRAWING COORDINATION. ALL DIMENSIONS AND SPECIFICATIONS SHOULD BE VERIFIED BY CONSULTANT AND/OR CONTRACTOR BEFORE ACTUAL CONSTRUCTION BEGINS.

#### 4 DOOR STOP AND HOLDER DETAIL

RBS-1A-004 SCALE: N.T.S.

REFERENCE DRAWINGS		ISSUE		REVISIONS		DRAWN BY: G.R 07/09/22		DESIGNED BY: GO TRANSIT		 A Division of Metrolinx		NEW SHELTERS		VAULTED ROOF SHELTER		DETAILS	
				6 FEB 2015	BF DOOR OPERATOR & ELEC. ENCLOSURE	CHECKED BY: D.S.P		APPROVED BY:				CONTRACT NO.	DWG. NO. RBS-1A-004	REV. 6	SHEET		
				5 JUN 2014	REMOVED CABLE SPLICES												
				4 DEC 2013	DISCLAIMER NOTE												
				3 SEPT 2013	RAMP AND HANDRAIL REVISION												
				2 AUG 2013	COLOUR REVISION												
				1 JULY 2012	NOMENCLATURE REVISION												
DWG. NO.	TITLE	REV.	DATE	ISSUED FOR	REV.	DATE	SCALE: NONE		FULL SIZE ONLY								