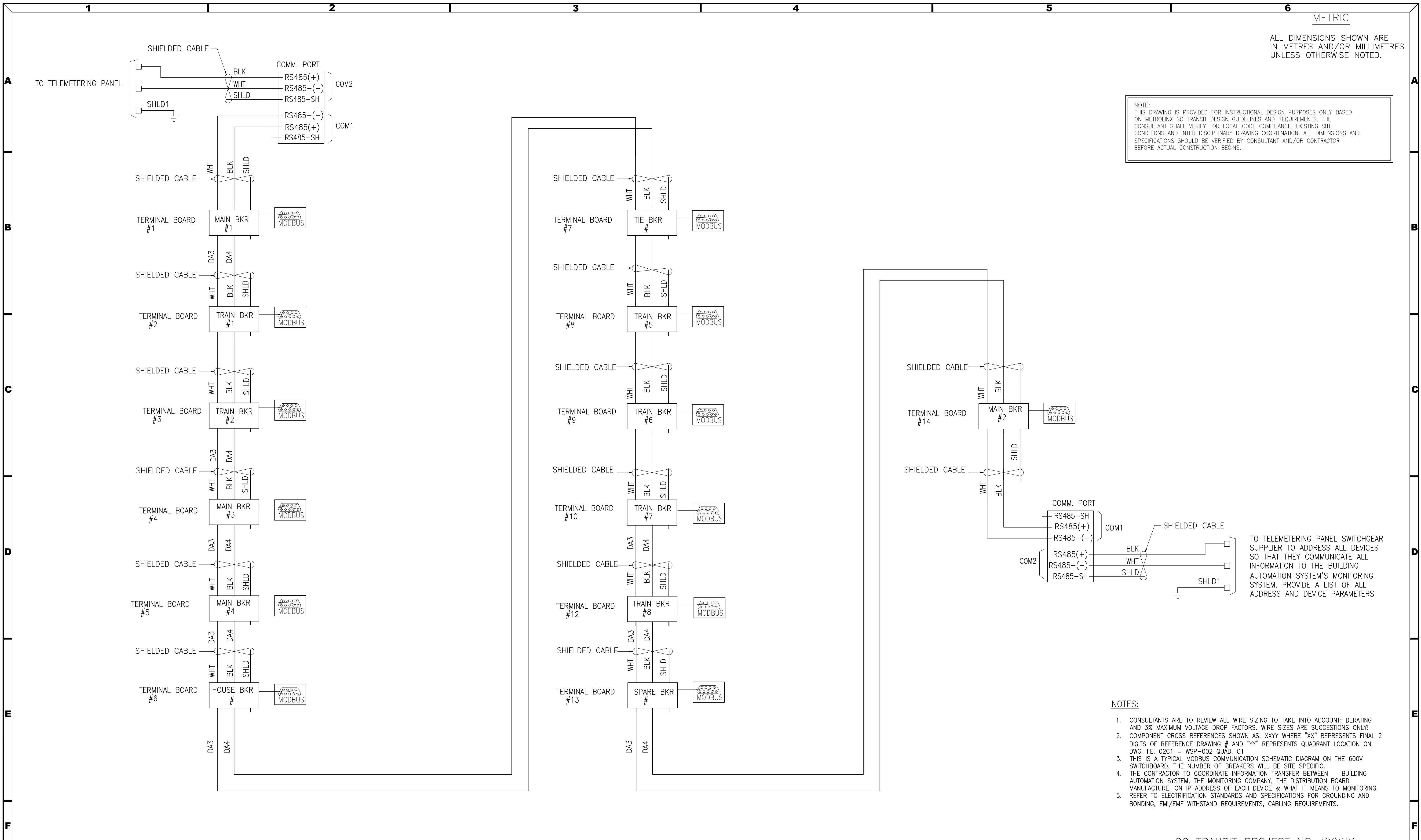


ALL DIMENSIONS SHOWN ARE IN METRES AND/OR MILLIMETRES UNLESS OTHERWISE NOTED.

NOTE:
THIS DRAWING IS PROVIDED FOR INSTRUCTIONAL DESIGN PURPOSES ONLY BASED ON METROLINK GO TRANSIT DESIGN GUIDELINES AND REQUIREMENTS. THE CONSULTANT SHALL VERIFY FOR LOCAL CODE COMPLIANCE, EXISTING SITE CONDITIONS AND INTER DISCIPLINARY DRAWING COORDINATION. ALL DIMENSIONS AND SPECIFICATIONS SHOULD BE VERIFIED BY CONSULTANT AND/OR CONTRACTOR BEFORE ACTUAL CONSTRUCTION BEGINS.



- NOTES:
- CONSULTANTS ARE TO REVIEW ALL WIRE SIZING TO TAKE INTO ACCOUNT; DERATING AND 3% MAXIMUM VOLTAGE DROP FACTORS. WIRE SIZES ARE SUGGESTIONS ONLY!
 - COMPONENT CROSS REFERENCES SHOWN AS: XXXY WHERE "XX" REPRESENTS FINAL 2 DIGITS OF REFERENCE DRAWING # AND "YY" REPRESENTS QUADRANT LOCATION ON DWG. I.E. 02C1 = WSP-002 QUAD. C1
 - THIS IS A TYPICAL MODBUS COMMUNICATION SCHEMATIC DIAGRAM ON THE 600V SWITCHBOARD. THE NUMBER OF BREAKERS WILL BE SITE SPECIFIC.
 - THE CONTRACTOR TO COORDINATE INFORMATION TRANSFER BETWEEN BUILDING AUTOMATION SYSTEM, THE MONITORING COMPANY, THE DISTRIBUTION BOARD MANUFACTURE, ON IP ADDRESS OF EACH DEVICE & WHAT IT MEANS TO MONITORING.
 - REFER TO ELECTRIFICATION STANDARDS AND SPECIFICATIONS FOR GROUNDING AND BONDING, EM/EMF WITHSTAND REQUIREMENTS, CABLING REQUIREMENTS.

GO TRANSIT PROJECT NO. XXXXX

Aug 15/18 12:29pm
AutoCAD drawing: WSP-031.dwg

| REFERENCE DRAWINGS | | ISSUE | | REVISIONS | | |
|--------------------|-------|-------|------|------------|------|-----------|
| DWG. NO. | TITLE | REV. | DATE | ISSUED FOR | REV. | DATE |
| | | | | | 5 | FEB. 2018 |
| | | | | | 4 | DEC 2013 |
| | | | | | 3 | MAR 2013 |
| | | | | | 2 | JULY 2012 |
| | | | | | 1 | SEPT.2010 |

| | |
|---------------|----------------|
| DRAWN BY: | DESIGNED BY: |
| CHECKED BY: | APPROVED BY: |
| SCALE: N.T.S. | FULL SIZE ONLY |



| | | | |
|--|---------------------|-----------|-------------|
| XXXXXX WAYSIDE POWER MAIN 600V SWITCHBOARD MODBUS SCHEMATIC | | | |
| CONTRACT NO. XXXXXXXXXXXX | DWG. NO. WSP-031 | REV. 5 | SHEET XX |