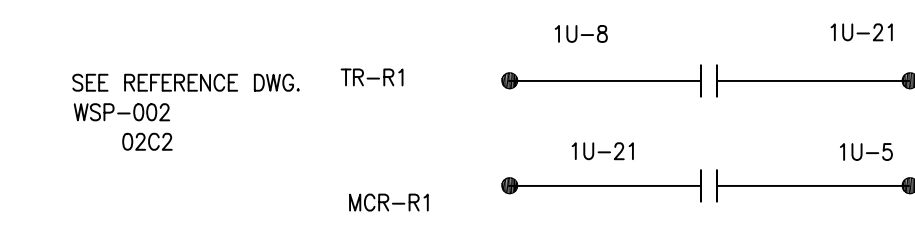
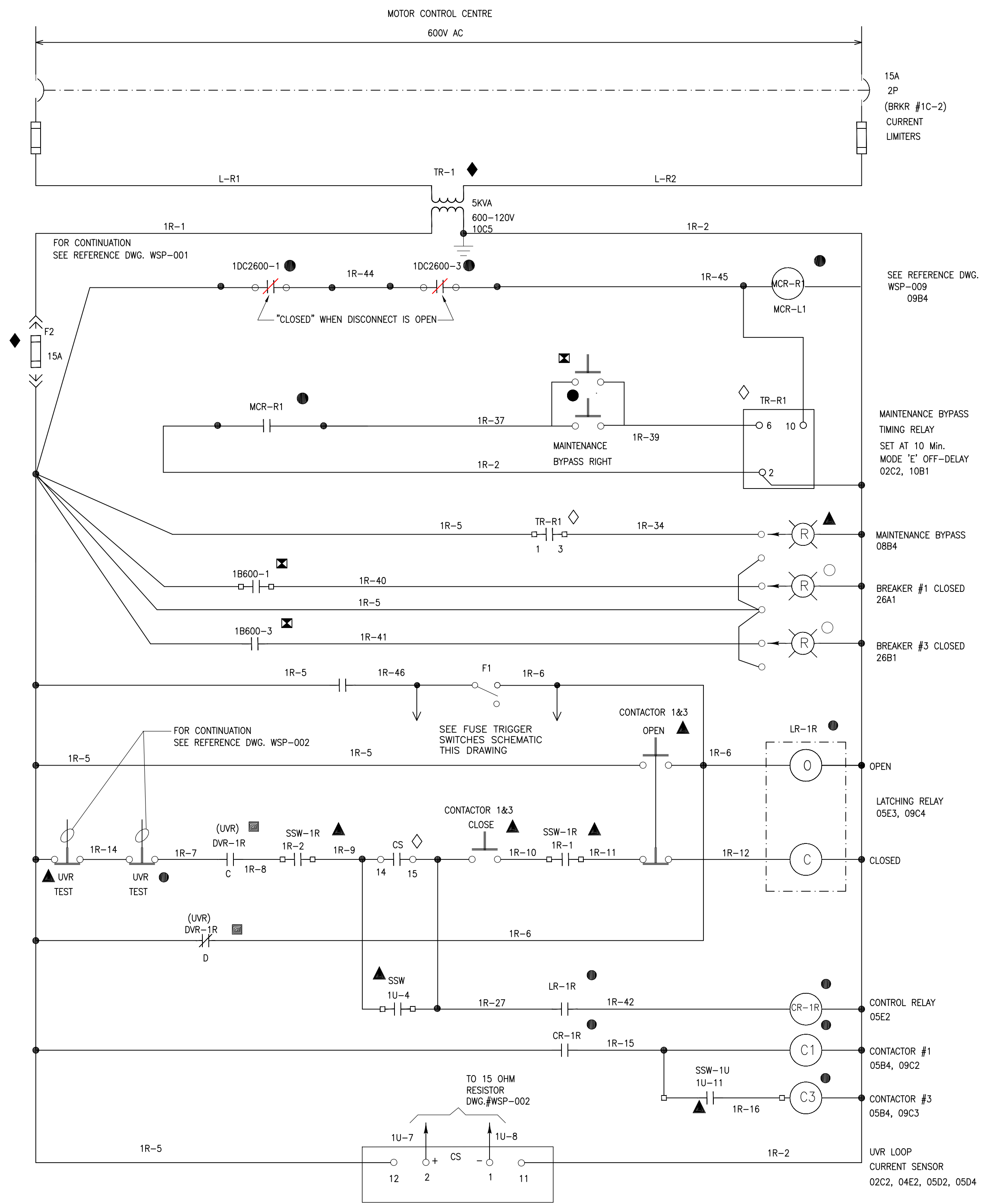
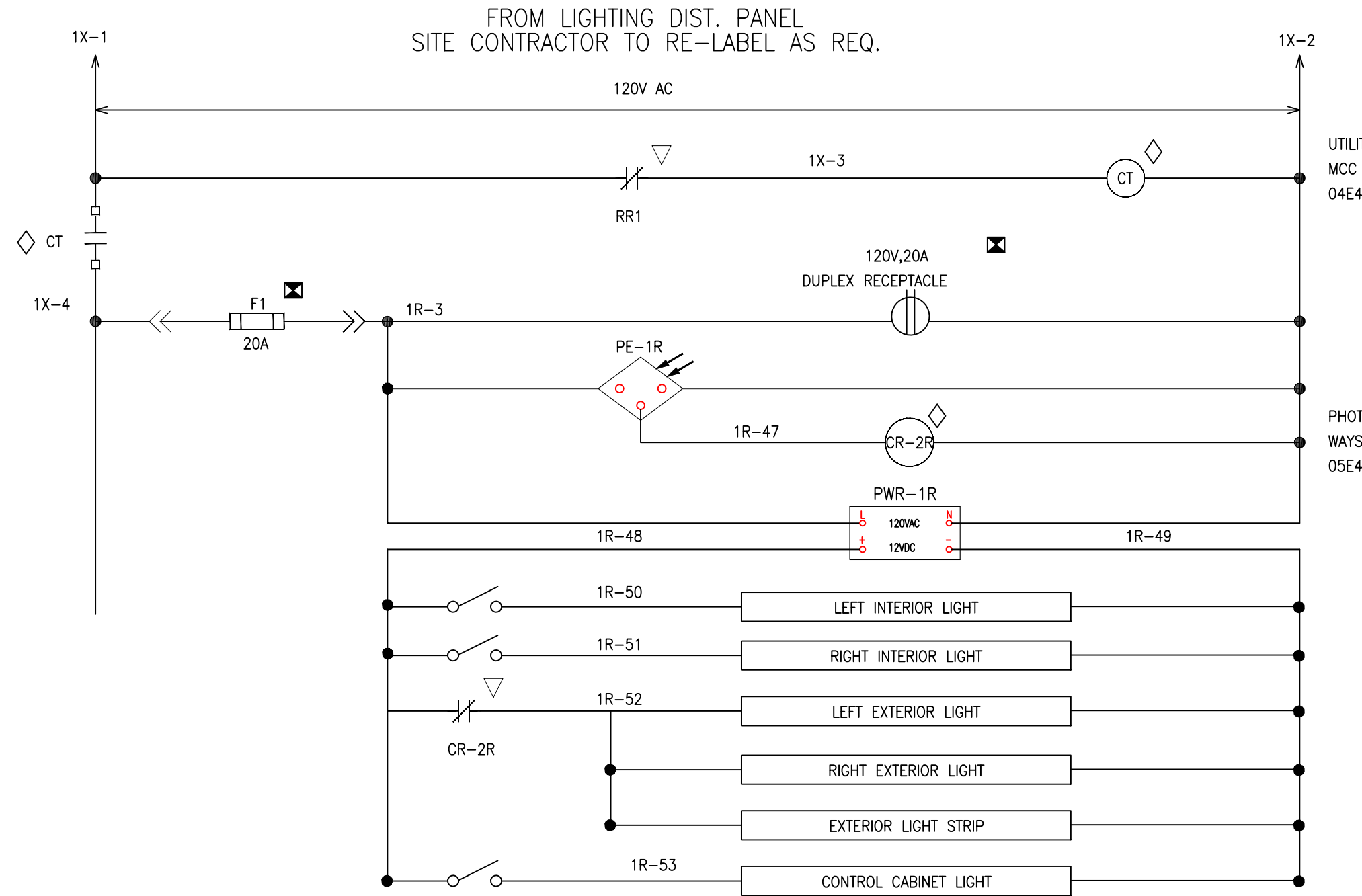
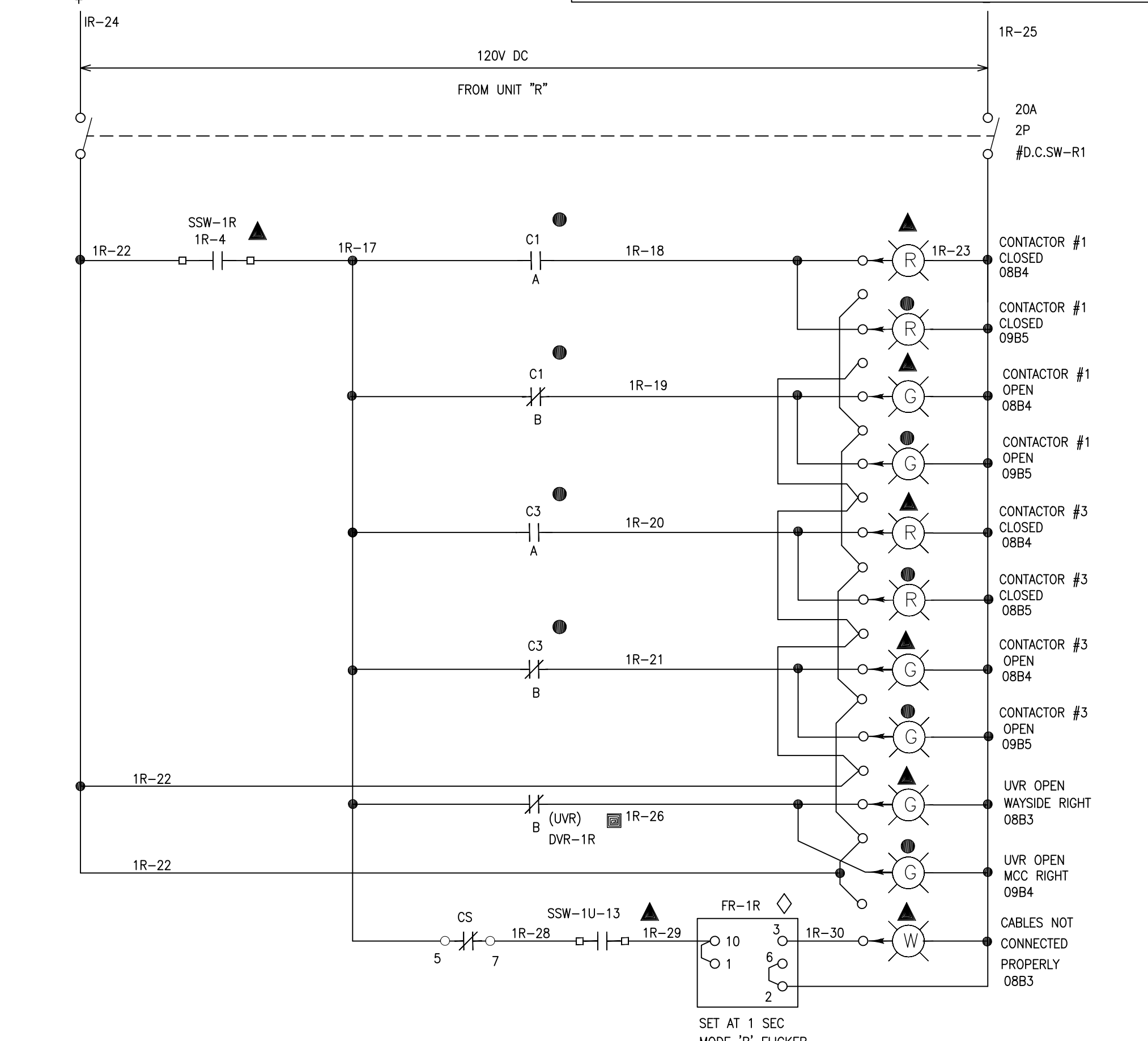


RIGHT SIDE
120VAC WIRING



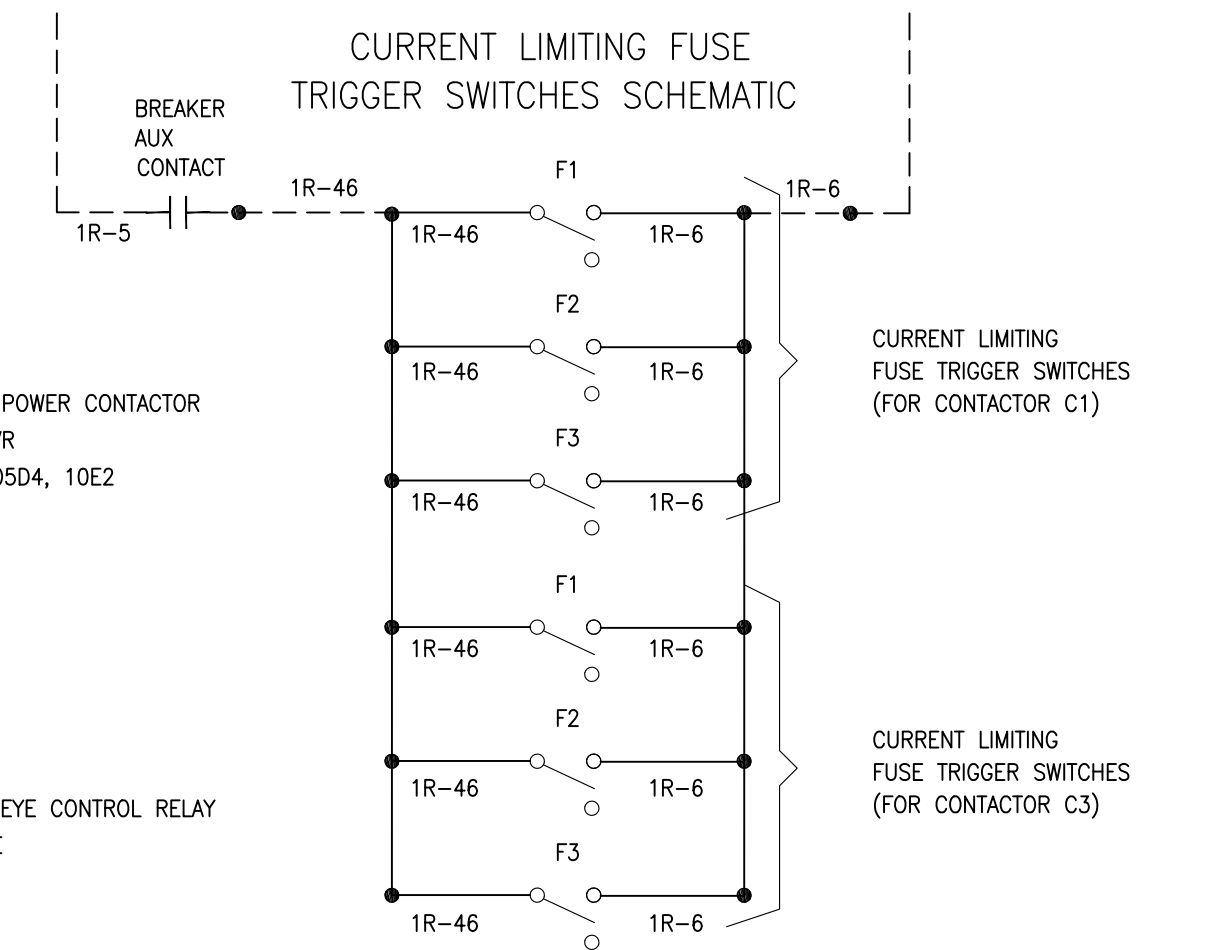
RECTIFIER UNIT "R"



NOTE:
THIS DRAWING IS PROVIDED FOR INSTRUCTIONAL DESIGN PURPOSES ONLY BASED ON METROLINK GO TRANSIT DESIGN GUIDELINES AND REQUIREMENTS. THE CONSULTANT SHALL VERIFY FOR LOCAL CODE COMPLIANCE, EXISTING SITE CONDITIONS AND INTER DISCIPLINARY DRAWING COORDINATION. ALL DIMENSIONS AND SPECIFICATIONS SHOULD BE VERIFIED BY CONSULTANT AND/OR CONTRACTOR BEFORE ACTUAL CONSTRUCTION BEGINS.

LEGEND
ALL DIMENSIONS SHOWN ARE IN METRES AND/OR MILLIMETRES UNLESS OTHERWISE NOTED.

- DEVICE LOCATED IN RELAY PANEL
- ▲ DEVICE LOCATED IN WAYSIDE CONTROL PANEL RIGHT SIDE
- △ DEVICE LOCATED IN WAYSIDE CONTROL PANEL LEFT SIDE
- DEVICE LOCATED IN MCC RIGHT SIDE
- ⊗ DEVICE LOCATED IN MCC PANEL LEFT SIDE
- DEVICE LOCATED IN INDICATOR PANEL
- ⊠ DEVICE LOCATED IN WAYSIDE DS PANEL RIGHT SIDE
- ⊡ DEVICE LOCATED IN WAYSIDE DS PANEL LEFT SIDE
- ▼ DEVICE LOCATED ON SUBSTATION EXTERIOR IN FIREMAN'S EMERGENCY POWER OFF BOX
- ▽ DEVICE LOCATED IN FEPO CONTROL PANEL
- ◀ DEVICE LOCATED IN WAYSIDE CONTROL PANEL FIREMAN'S BOX
- ◁ DEVICE LOCATED IN REMOTE OPERATIONAL PANEL FOR MAIN FEEDER BREAKERS
- ◆ DEVICE LOCATED IN DC SUPPLY CABINET
- ◇ DEVICE LOCATED IN DVR PANEL
- ♦ DEVICE LOCATED IN TRANSFORMER PANEL
- TERMINAL LOCATED IN BREAKER COMPARTMENT
- - - INDICATE EXTERNAL WIRING



- GENERAL NOTES:
- CONSULTANTS ARE TO REVIEW ALL WIRE SIZING TO TAKE INTO ACCOUNT; DERATING AND 3% MAXIMUM VOLTAGE DROP FACTORS. WIRE SIZES ARE SUGGESTIONS ONLY!
 - COMPONENT CROSS REFERENCES SHOWN AS: XXXY WHERE "XX" REPRESENTS FINAL 2 DIGITS OF REFERENCE DRAWING # AND "YY" REPRESENTS QUADRANT LOCATION ON DWG. I.E. 02C1 = WSP-002 QUAD. C1
 - CABINET LIGHT AND DUPLEX RECEPTACLE MAY BE FED FROM A SUBSTATION 120/208 VAC PANEL. LIGHTS AND RECEPTACLES ARE TO BE TURNED OFF ON FEPO ACTIVATION.
 - REFER TO ELECTRIFICATION STANDARDS AND SPECIFICATIONS FOR GROUNDING AND BONDING, EMI/EMF WITHSTAND REQUIREMENTS, CABLING REQUIREMENTS.

GO TRANSIT PROJECT NO. XXXXX

AutoCAD drawing: WSP-005.dwg Aug 15/18 12:25pm

REFERENCE DRAWINGS		ISSUE		REVISIONS		DRAWN BY:	DESIGNED BY:
WSP-012	WAYSIDE STATION EQUIPMENT ARRANGEMENT 2 OF 3			5	FEB. 2018	UPDATES AND ADDITIONS	
				4	DEC 2013	DISCLAIMER NOTE	
				3	MAR 2013	UPDATES AND ADDITIONS	
				2	JULY 2012	NOMENCLATURE REVISION	
				1	SEPT. 2010	GENERAL REVISIONS	
DWG. NO.	TITLE	REV.	DATE	ISSUED FOR	REV.	DATE	

CHECKED BY:	APPROVED BY:
SCALE: N.T.S.	FULL SIZE ONLY



XXXXXX
WAYSIDE POWER

RIGHT SIDE MCC CONTROL SCHEMATIC DIAGRAM

CONTRACT NO. XXXXXXXXXX	DWG. NO. WSP-005	REV. 5	SHEET XX
----------------------------	---------------------	-----------	-------------