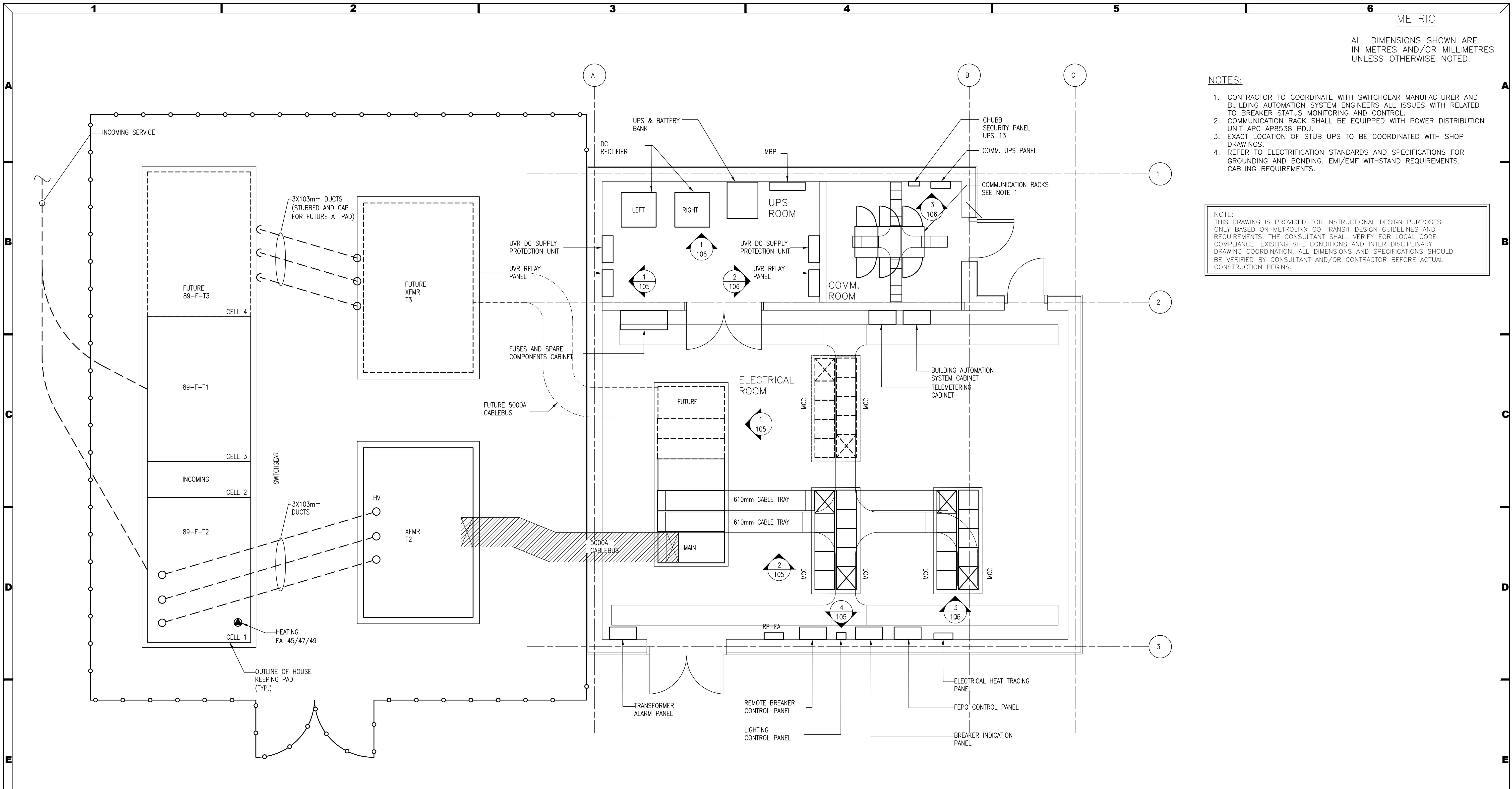


ALL DIMENSIONS SHOWN ARE IN METRES AND/OR MILLIMETRES UNLESS OTHERWISE NOTED.

NOTES:

1. CONTRACTOR TO COORDINATE WITH SWITCHGEAR MANUFACTURER AND BUILDING AUTOMATION SYSTEM ENGINEERS ALL ISSUES WITH RELATED TO BREAKER STATUS MONITORING AND CONTROL.
2. COMMUNICATION RACK SHALL BE EQUIPPED WITH POWER DISTRIBUTION UNIT APC AP8538 PDU.
3. EXACT LOCATION OF STUB UPS TO BE COORDINATED WITH SHOP DRAWINGS.
4. REFER TO ELECTRIFICATION STANDARDS AND SPECIFICATIONS FOR GROUNDING AND BONDING, EMI/EMF WITHSTAND REQUIREMENTS, CABLING REQUIREMENTS.

NOTE:  
THIS DRAWING IS PROVIDED FOR INSTRUCTIONAL DESIGN PURPOSES ONLY BASED ON METROLINX GO TRANSIT DESIGN GUIDELINES AND REQUIREMENTS. THE CONSULTANT SHALL VERIFY FOR LOCAL CODE COMPLIANCE, EXISTING SITE CONDITIONS AND INTER DISCIPLINARY DRAWING COORDINATION. ALL DIMENSIONS AND SPECIFICATIONS SHOULD BE VERIFIED BY CONSULTANT AND/OR CONTRACTOR BEFORE ACTUAL CONSTRUCTION BEGINS.



1 SUBSTATION BUILDING GENERAL EQUIPMENT LAYOUT  
1:50

Aug 15/18 12:30pm  
AutoCAD drawing: WSP-041.dwg

REFERENCE DRAWINGS		ISSUE		REVISIONS		
DWG. NO.	TITLE	REV.	DATE	ISSUED FOR	REV.	DATE

DRAWN BY:	DESIGNED BY:
CHECKED BY:	APPROVED BY:
SCALE: 1:50 FULL SIZE ONLY	



GO TRANSIT PROJECT NO. XXXXX

**XXXXXX**  
WAYSIDE POWER  
SUBSTATION BUILDING  
GENERAL EQUIPMENT LAYOUT

CONTRACT NO. XXXXXXXXXXXX	DWG. NO. WSP-041	REV. 0	SHEET XX
------------------------------	---------------------	-----------	-------------