

METRIC

ALL DIMENSIONS SHOWN ARE IN METRES AND/OR MILLIMETRES UNLESS OTHERWISE NOTED.

REFERENCE NOTES:

- ① PREPURCHASED 120V DC POWER SUPPLY AND DISTRIBUTION PANEL
- ② PREPURCHASED UVR DC SUPPLY PROTECTION PANEL
- ③ PREPURCHASED UVR RELAY PANEL
- ④ TELEMETERING PANEL
- ⑤ 120V SINGLE PHASE, 2KVA UPS COMPLETE WITH EXTERNAL MAINTENANCE BY PASS, DIAL UP CAPABILITY AND 30 MINUTE BATTERY BACK UP TIME.
- ⑥ 100A, 24 CCT, (15A-EACH), 120V, UNINTERRUPTIBLE POWER SUPPLY DISTRIBUTION PANEL.
- * EXACT EQUIPMENT LOCATION TO BE DECIDED ON SITE.

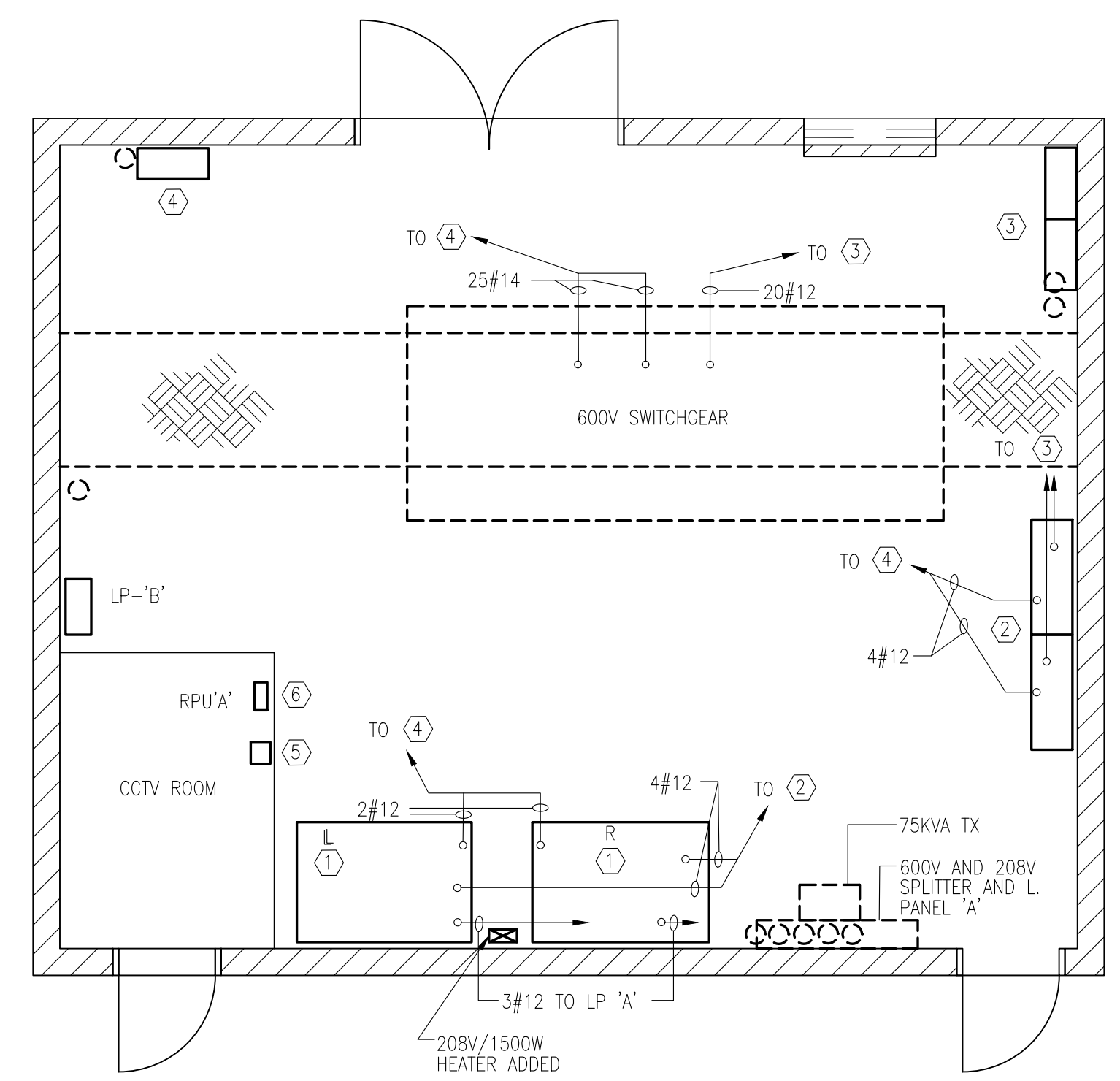
GENERAL NOTES:

1. REFER TO ELECTRIFICATION STANDARDS AND SPECIFICATIONS FOR GROUNDING AND BONDING, EM/EMF WITHSTAND REQUIREMENTS, CABLING REQUIREMENTS.

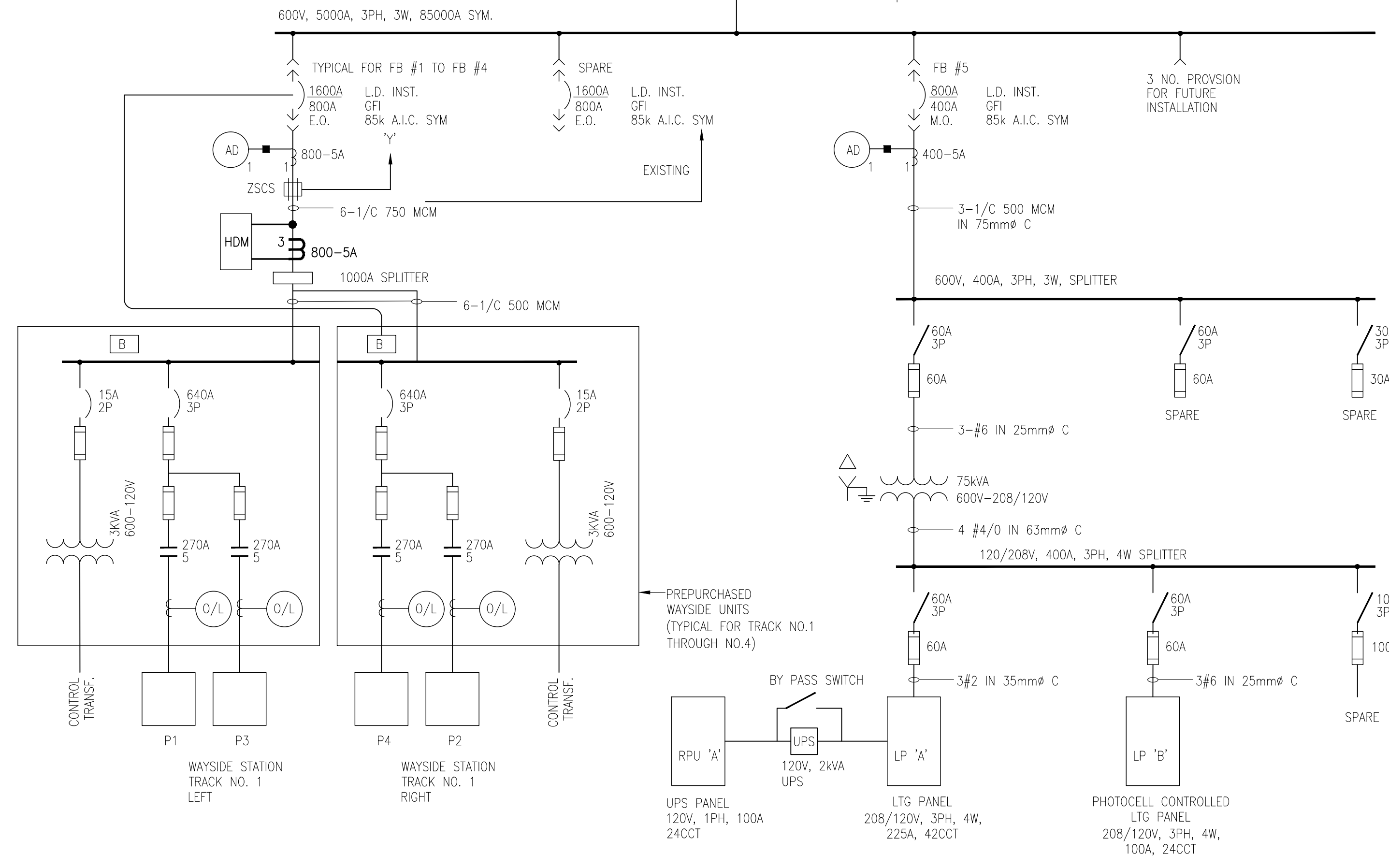
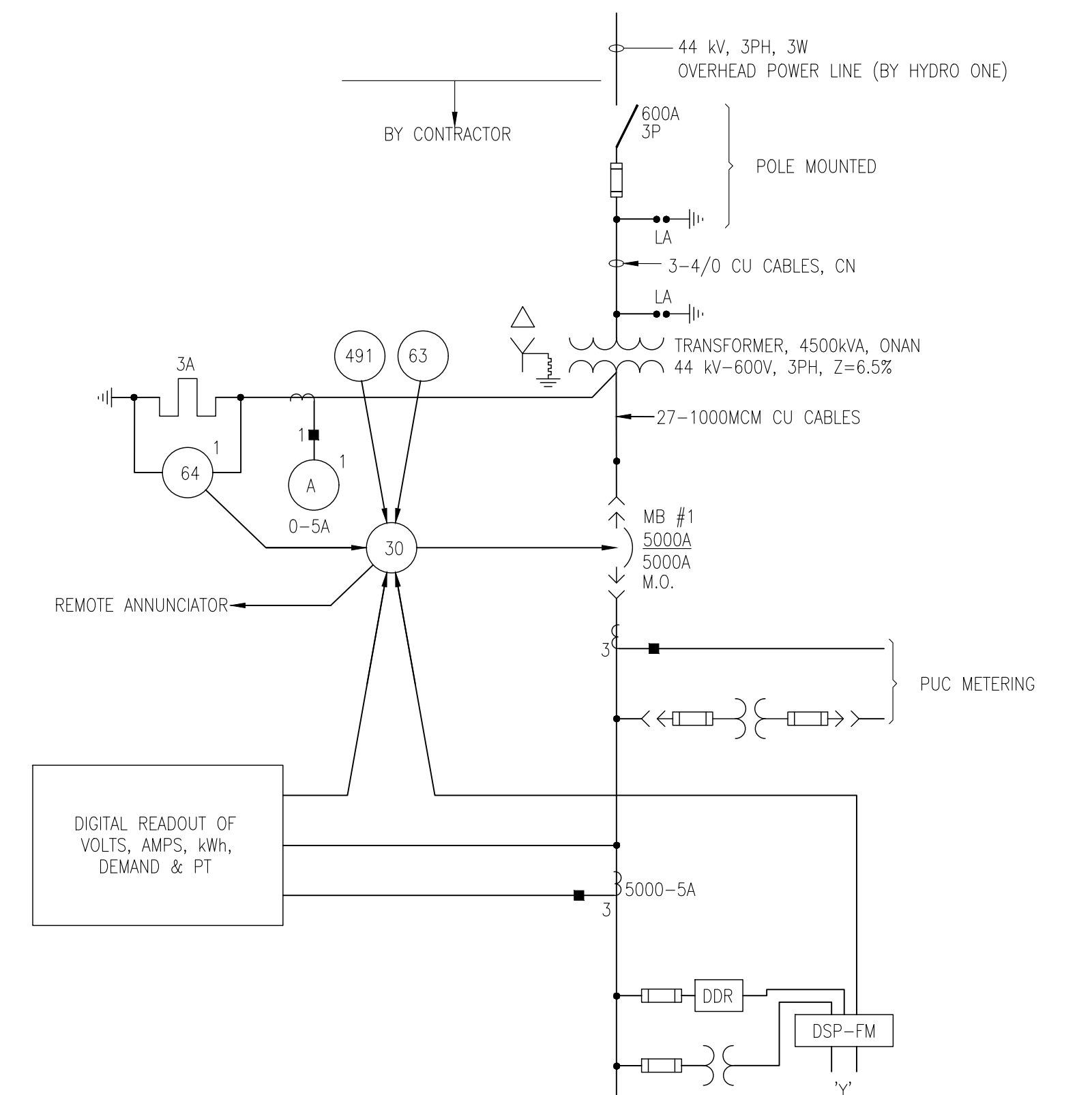
LEGEND:

- E.O. ELECTRICAL OPERATED BREAKER
- M.O. MANUALLY OPERATED BREAKER
- INST. INSTANTANEOUS
- GFI GROUND FAULT TRIP
- SD SHORT DELAY
- LD LONG DELAY
- [B] REMOTE EMERGENCY TRIP & CLOSE PUSH BUTTONS WITH OPEN AND CLOSE INDICATION LIGHTS
- (27) UNDERVOLTAGE RELAY
- (30) ANNUNCIATOR TARGET RELAY
- (49) TEMPERATURE PROTECTION RELAY
- (63) GAS PRESSURE RELAY (TRANSFORMER)
- (64) GROUND PROTECTION RELAY
- (AD) DEMAND AMMETER
- EXISTING
- NEW

NOTE:
THIS DRAWING IS PROVIDED FOR INSTRUCTIONAL DESIGN PURPOSES ONLY BASED ON METROLINX GO TRANSIT DESIGN GUIDELINES AND REQUIREMENTS. THE CONSULTANT SHALL VERIFY FOR LOCAL CODE COMPLIANCE, EXISTING SITE CONDITIONS AND INTER DISCIPLINARY DRAWING COORDINATION. ALL DIMENSIONS AND SPECIFICATIONS SHOULD BE VERIFIED BY CONSULTANT AND/OR CONTRACTOR BEFORE ACTUAL CONSTRUCTION BEGINS.



SUBSTATION EQUIPMENT LAYOUT
NTS



GO TRANSIT PROJECT NO. XXXXX

AutoCAD drawing: WSP-053.dwg Aug 15/18 12:31pm

REFERENCE DRAWINGS		ISSUE		REVISIONS	
MAR/2008	WSP-015				
DWG NO.	TITLE	REV.	DATE	ISSUED FOR	REV.

DRAWN BY:	DESIGNED BY:
CHECKED BY:	APPROVED BY:
SCALE: 1:50 FULL SIZE ONLY	



XXXXXX WAYSIDE POWER SUBSTATION EQUIPMENT LAYOUT AND SINGLE LINE DIAGRAM			
CONTRACT NO. XXXXXXXXXX	DWG. NO. WSP-053	REV. 0	SHEET XX