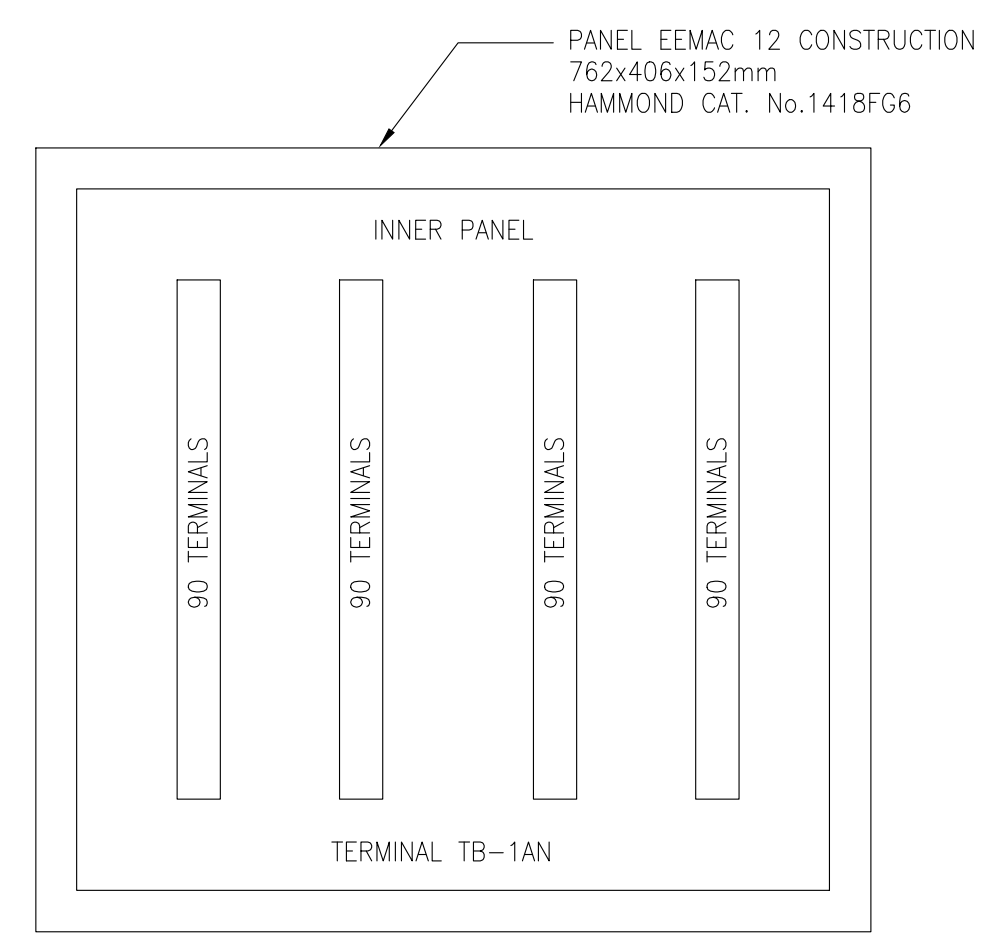
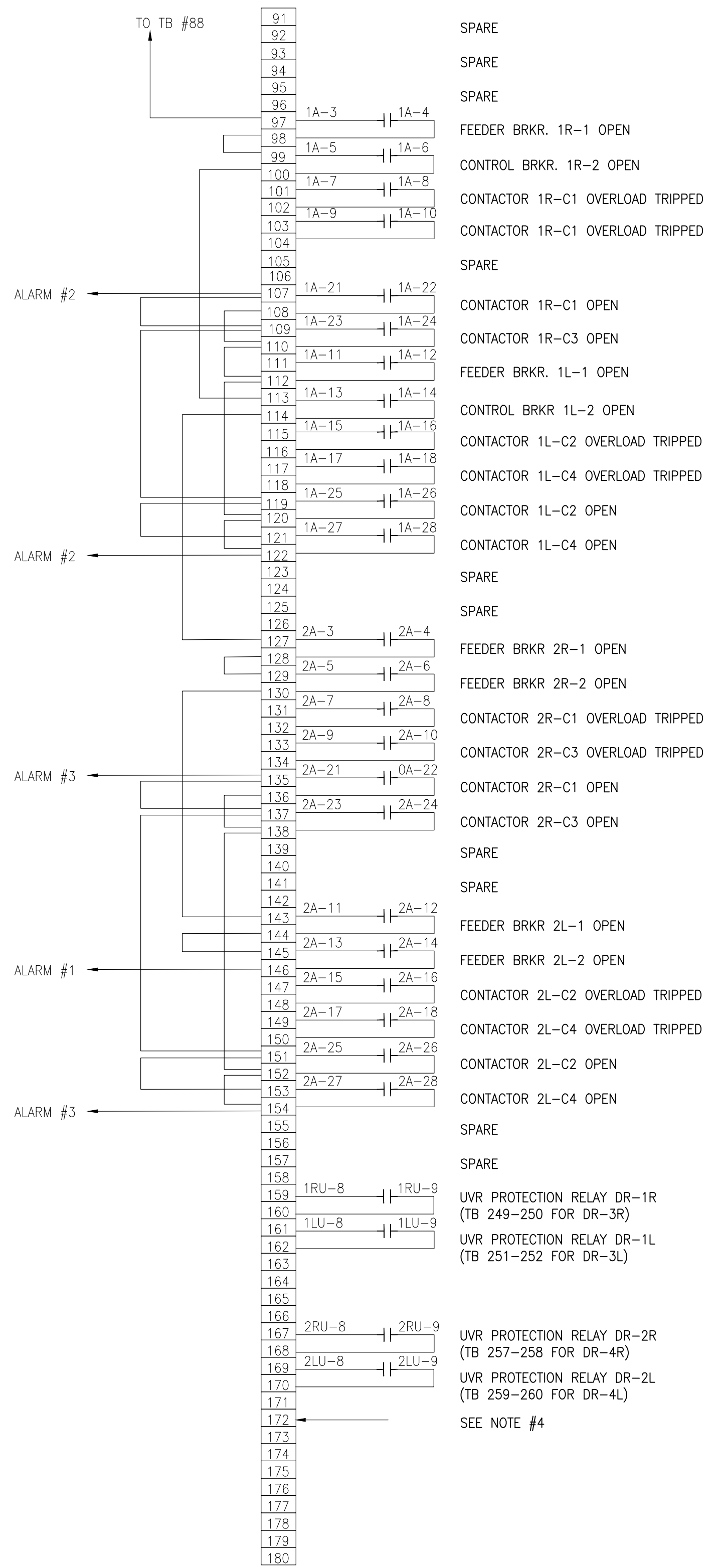
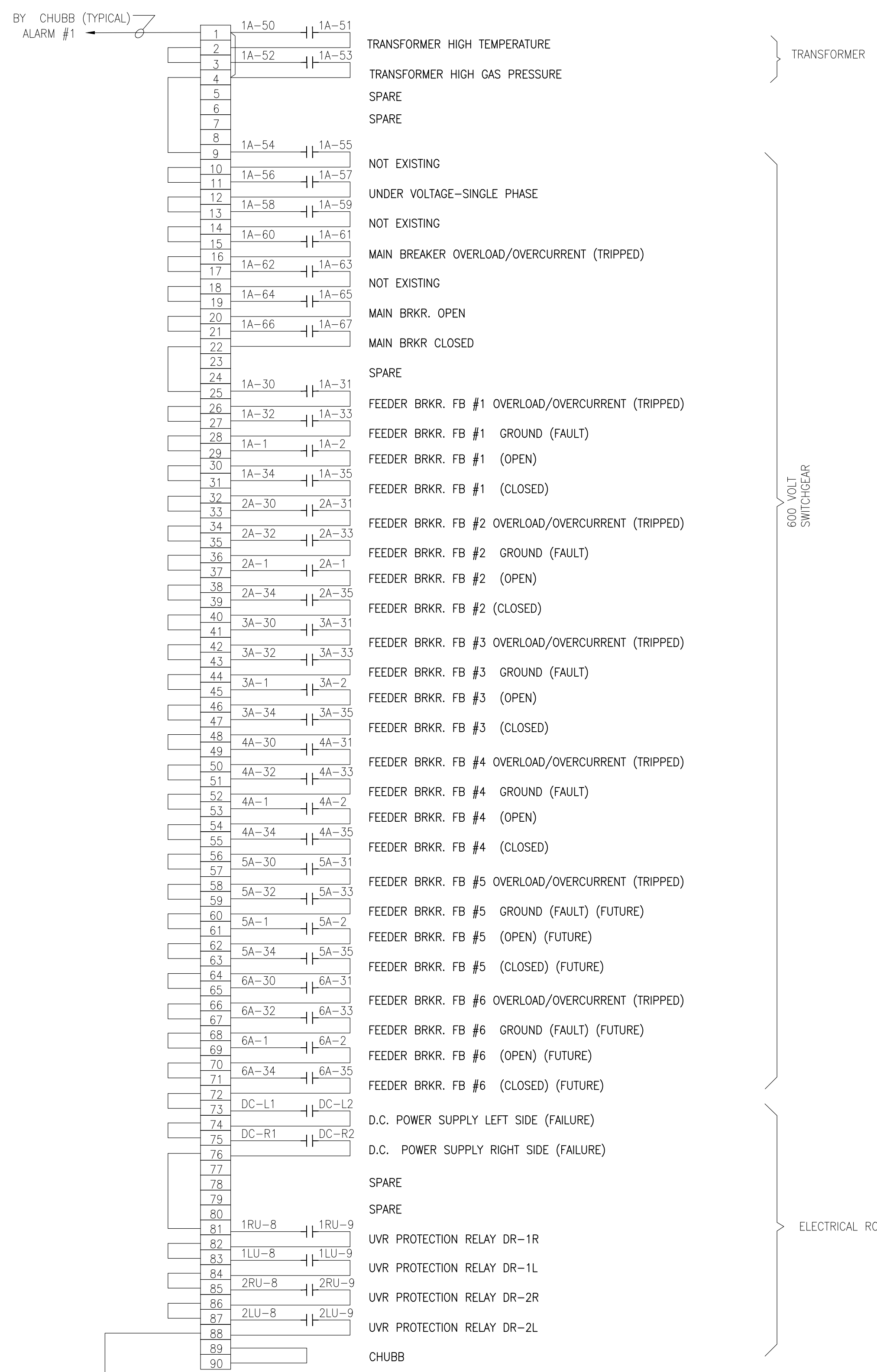


METRIC

ALL DIMENSIONS SHOWN ARE IN METRES AND/OR MILLIMETRES UNLESS OTHERWISE NOTED.



TELEMETERING TERMINAL CABINET
N.T.S.

NOTES:

- SERIES CONNECTED CONTACTS TO BE NORMALLY CLOSED. 'OPEN ON ALARM'
- PARALLEL CONNECTED CONTACTS TO BE NORMALLY OPEN. 'CLOSED ON ALARM'
- ALL JUMPERS BY THIS CONTACTOR.
- WIRING TO BE REPEATED FOR WAYSIDE 3R, 3L, 4R AND 4L.
- REFER TO ELECTRIFICATIONS STANDARDS AND SPECIFICATIONS FOR GROUNDING AND BONDING, EMI/EMF WITHSTAND REQUIREMENTS, CABLING REQUIREMENTS.



NOTE:
THIS ALTERNATE CONFIGURATION SHALL ONLY BE USED WITH METROLINX APPROVAL. THE CONNECTION OF ALARMS TOGETHER TO FORM COMMENT ALARMS SHALL GENERALLY NOT BE DONE.

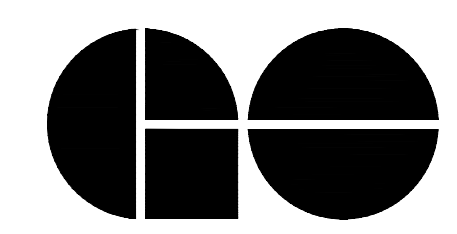
NOTE:
THIS DRAWING IS PROVIDED FOR INSTRUCTIONAL DESIGN PURPOSES ONLY BASED ON METROLINX GO TRANSIT DESIGN GUIDELINES AND REQUIREMENTS. THE CONSULTANT SHALL VERIFY FOR LOCAL CODE COMPLIANCE, EXISTING SITE CONDITIONS AND INTER DISCIPLINARY DRAWING COORDINATION. ALL DIMENSIONS AND SPECIFICATIONS SHOULD BE VERIFIED BY CONSULTANT AND/OR CONTRACTOR BEFORE ACTUAL CONSTRUCTION BEGINS.

GO TRANSIT PROJECT NO. XXXXX

AutoCAD drawing: WSP-023A.dwg Aug 15/18 12:28pm

REV.	DATE	ISSUED FOR
0	FEB.2019	FIRST SUBMISSION

DRAWN BY:	DESIGNED BY:
CHECKED BY:	APPROVED BY:
SCALE: N.T.S.	FULL SIZE ONLY



A Division of Metrolinx

XXXXXX
WAYSIDE POWER
TELEMETERING PANEL (ALTERNATE)

CONTRACT NO. XXXXXXXXXXXX	DWG. NO. WSP-023A	REV. 0	SHEET XX
------------------------------	----------------------	-----------	-------------