

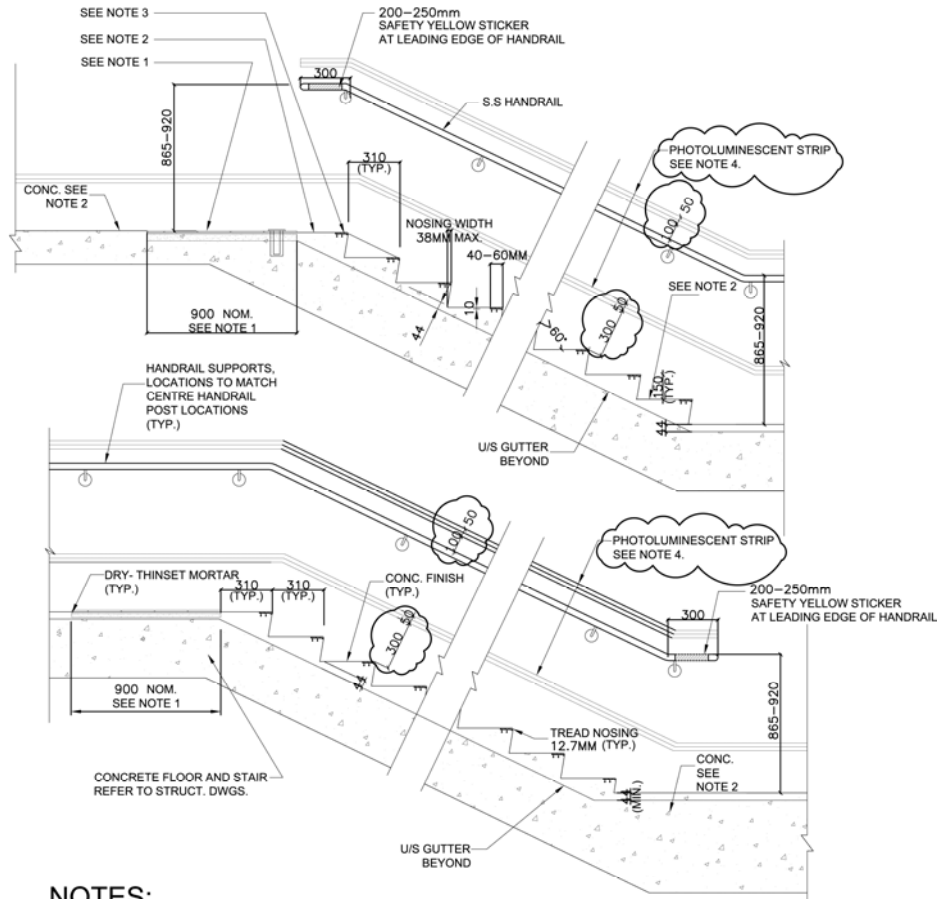
CI-0404

TAB 4: STATION & TERMINAL BUILDING INFRASTRUCTURE
Stairs & Stair Enclosures

FIGURE: TILES AT RAMP / STAIR APPROACH (SECTIONS)

SECTION:
Tab 4:
Station
Infrastructure

FIGURE:
Tiles at
Ramp / Stair
Approach
(Sections)



NOTES:

1. DETECTABLE WARNING SURFACE W/ CONTINUOUS RIDGES TO MEET CAN-CSA B651-04 ACCESSIBLE DESIGN STANDARDS. RIDGES SHALL BE INSTALLED PERPENDICULAR TO ROUTE OF TRAVEL; EXTENDING THE FULL WIDTH OF THE STAIR AND HAVE A DEPTH OF 900-920MM COMMENCING ONE TREAD DEPTH FROM THE EDGE OF THE STAIR.
2. CONCRETE - STEEL TROWEL WITH BRUSH FINISH
3. CAST IN SAFETY NOSING (50mm +/- 10mm) ON AN EXTRUDED ALUMINUM CARBORUNDUM BASE W/ EPOXY OR ABRASIVE FILLER/GRIT; EXTENDING THE FULL WIDTH OF THE TREAD REFER CSA B651-04 & CNIB STANDARDS FOR SLIP RESISTANCE & COLOUR CONTRAST REQUIREMENTS.

4. WALL MOUNTED PHOTOLUMINESCENT STRIP C/W ALUM. FRAME MADE OF CORROSION RESISTANT MATERIAL (ALUMINUM OR STAINLESS STEEL) IS TO BE SUPPLIED AND INSTALLED TO SUPPORT THE PHOTOLUMINESCENT STRIPS ALONG THE ENTIRE LENGTH (FOR BOTH STAIR AND HANDRAIL CONDITIONS). FASTENERS TO BE CORROSION RESISTANT (STAINLESS STEEL OR ALUMINUM) AND NOT VISIBLE. END CAPS TO BE VANDAL PROOF. (TYP. BOTH SIDES OF THE STAIR AND ABOVE THE HANDRAIL). ALIGN HANDRAIL PORTION TO LEADING EDGE OF HANDRAIL EXTENSION. REFER TO TAB 7 OF THE DRM FOR DETAILS.